

Aura 2½ seater sofa



Aura

Aura is a light and elegant sofa with neat stitching that shapes both the seat and back cushions in a geometric design language, creating a playful and inviting appearance. The high armrests and back cushions that frame Aura are upheld by the slender yet robust metal frame, creating a sharp contrast and adding a little extra edge to the design and your home.



Charlotte Høncke

4,393 \$

Specification

Cover

Nantes, Light Grey

Depth

78 cm

Composition

100% Polyester

Height

81 cm

Base

Black lacquered steel

Seat height

43 cm

Width

193 cm

Seat depth

55 cm

Select material and colour

NANTES - FABRIC Nantes is woven from 100% polyester and is an absolute bestseller. This stylish fabric featuring a visible structure is both stain-resistant and durable.



Nantes - Fabric,
Antracit
4,393 \$



Nantes - Fabric,
Blue Grey
4,393 \$



Nantes - Fabric,
Dark green
4,393 \$



Nantes - Fabric,
Dust Blue
4,393 \$



Nantes - Fabric,
Grey
4,393 \$



Nantes - Fabric,
Light Grey
4,393 \$



Nantes - Fabric,
Multi Grey
4,393 \$



Nantes - Fabric,
Petrol
4,393 \$



Nantes - Fabric,
Sea Green
4,393 \$



Nantes - Fabric,
Stone Blue
4,393 \$



Nantes - Fabric,
Light Beige
4,393 \$



Nantes - Fabric,
Light Blue
4,393 \$

BAIZE - FABRIC Baize is an extra soft upholstery fabric that provides superior comfort. The material has a beautiful, classic look that suits most furniture.



Baize - Fabric,
Antracit
4,393 \$



Baize - Fabric, Dark
Grey
4,393 \$



Baize - Fabric, Dust
Blue
4,393 \$



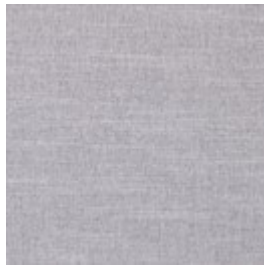
Baize - Fabric, Dust
Green
4,393 \$

Select material and colour



Baize - Fabric, Grey

4,393 \$



Baize - Fabric, Light Grey

4,393 \$

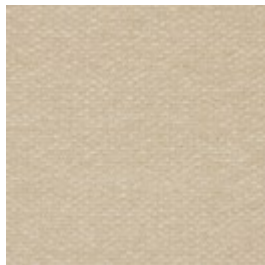


Baize - Fabric, Sand

4,393 \$

SIRA - FABRIC

Sira is a soft and comforting fabric made from 100% recycled cotton making it a natural, beautiful and sustainable choice. No new raw materials have been used, and the production is solely sponsored by solar or wind energy. Sira has a bold structure, yet incredibly soft feel. The heavy texture is complemented by the inviting touch that makes Sira a beautiful fabric - and even one of our most sustainable fabrics available.



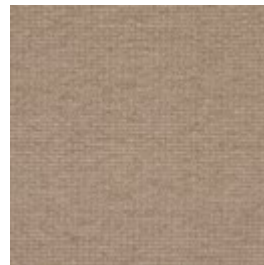
Sira - Fabric, Beige

4,393 \$



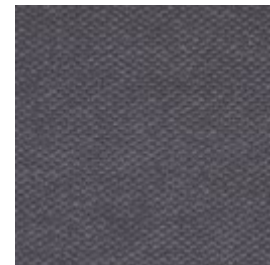
Sira - Fabric, Blue

4,393 \$



Sira - Fabric, Dark Beige

4,393 \$



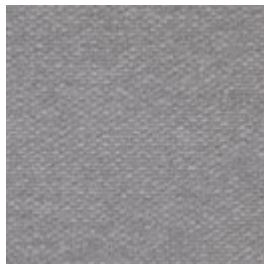
Sira - Fabric, Grey

4,393 \$



Sira - Fabric, Grey Brown

4,393 \$



Sira - Fabric, Light Grey

4,393 \$

Select material and colour

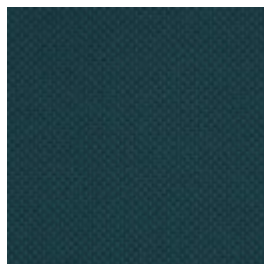
BERGO - FABRIC Bergo does something none of our other materials can do. It's made from recycled polyester made of plastic bottles. This ensures that no new raw materials are used and production focuses on minimising energy consumption and the use of biodegradable chemicals. Bergo is 100% free of heavy metals and is also certified according to the EU Ecolabel and Oeko-tex standards.



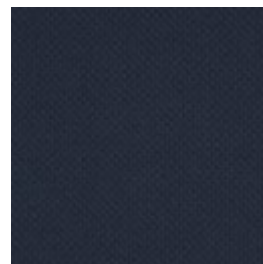
Bergo - Fabric,
Grey
4,393 \$



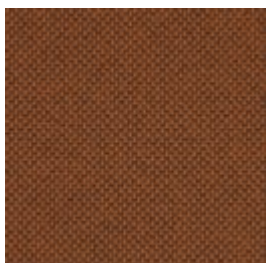
Bergo - Fabric,
Beige
4,393 \$



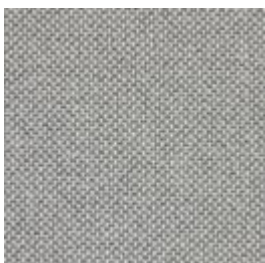
Bergo - Fabric,
Petrol
4,393 \$



Bergo - Fabric,
Dark Blue
4,393 \$



Bergo - Fabric, Raw
Amber
4,393 \$

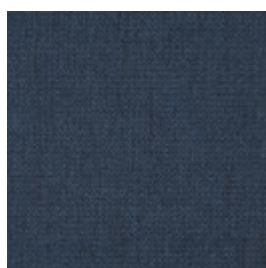


Bergo - Fabric,
Light Grey
4,393 \$



Bergo - Fabric,
Light Brown
4,393 \$

LONDON - FABRIC London is a strong upholstery fabric and comes in a variety of colors. It is a beautifully woven fabric with a pure and elegant look. London is 100% polyester.



London - Fabric,
Blue
4,710 \$



London - Fabric,
Brown
4,710 \$



London - Fabric,
Burgundy
4,710 \$



London - Fabric,
Dark Grey
4,710 \$



London - Fabric,
Dust Green
4,710 \$



London - Fabric,
Grey Brown
4,710 \$



London - Fabric,
Light Beige
4,710 \$



London - Fabric,
Light Grey
4,710 \$

Select material and colour



London - Fabric,
Mint
4,710 \$



London - Fabric,
Multi Grey
4,710 \$



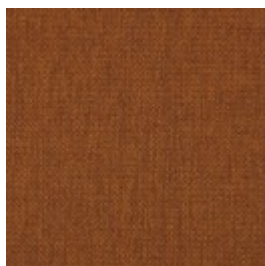
London - Fabric,
Rosa
4,710 \$



London - Fabric,
Sea Green
4,710 \$



London - Fabric,
Petrol
4,710 \$



London - Fabric,
Raw Amber
4,710 \$



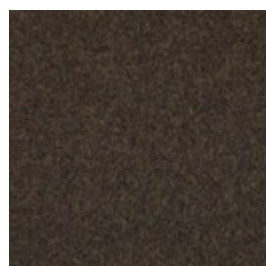
London - Fabric,
Dust Blue
4,710 \$



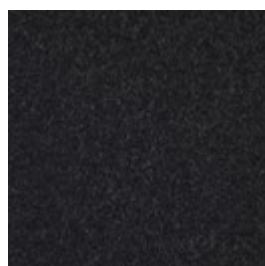
London - Fabric,
Light Blue
4,710 \$

QUAL - WOOL

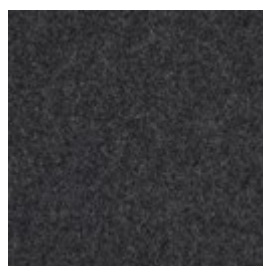
Qual is woven from 100% pure new wool – specially developed for Bolia. The soft structure makes it comfortable and user-friendly. The wool's natural content of lanolin makes the fabric easy to keep clean.



Qual - Wool, Army
Melange
4,710 \$



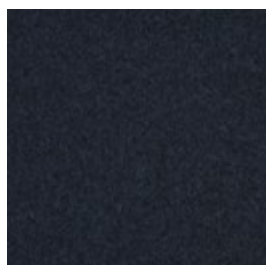
Qual - Wool, Dark
Grey Melange
4,710 \$



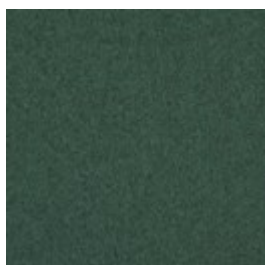
Qual - Wool, Grey
Melange
4,710 \$



Qual - Wool, Light
Grey Melange
4,710 \$



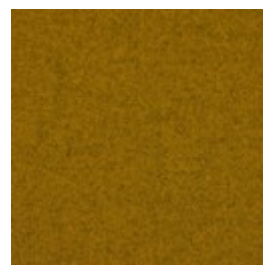
Qual - Wool, Navy
Melange
4,710 \$



Qual - Wool, Sea
Green
4,710 \$



Qual - Wool, Stone
Grey
4,710 \$

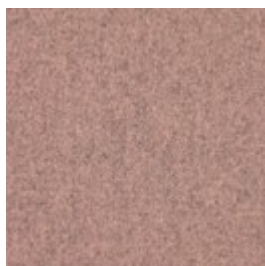


Qual - Wool, Curry
Melange
4,710 \$

Select material and colour



Qual - Wool, Mint
Melange
4,710 \$



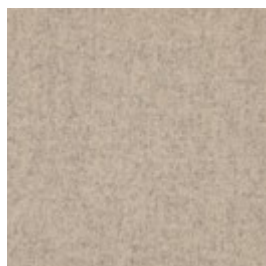
Qual - Wool, Rose
Melange
4,710 \$



Qual - Wool, Sand
4,710 \$

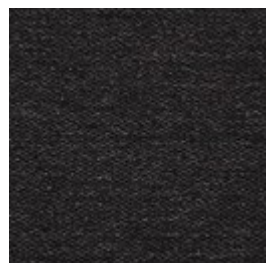


Qual - Wool, Blue
Melange
4,710 \$



Qual - Wool, Dark
Beige
4,710 \$

MEMORY - FABRIC - Memory is an upholstery toned with three colours that give the fabric a totally unique character. A durable and hard-wearing fabric with a beautiful and elegant structure that not only adds an exclusive look to any piece of furniture, but is also soft and comfortable to sit in.



Memory - Fabric,
Antracit

4,710 \$



Memory - Fabric,
Blue

4,710 \$

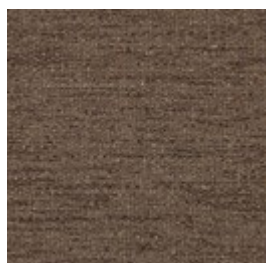


Memory - Fabric,
Grey

4,710 \$



Memory
- Fabric,
Grey -
White
4,710 \$



Memory - Fabric,
Light Brown
4,710 \$



Memory - Fabric,
Light Grey
4,710 \$

Select material and colour

STEP MELANGE - FABRIC Step Melange features a vibrant and attractive interplay of colour with a luxurious melange effect. Step Melange is both OEKO-TEX certified and EU Ecolabelled, making it therefore a durable and beautiful furniture fabric. With a Martindale count of 100,000, the fabric is also suitable for both private and public use.



Step Melange -
Fabric, Grey

4,710 \$



Step Melange -
Fabric, Grey Blue

4,710 \$



Step Melange -
Fabric, Light Grey

4,710 \$



Step Melange -
Fabric, Light Blue
Green

4,710 \$



Step Melange -
Fabric, Beige

4,710 \$



Step Melange -
Fabric, Dark grey

4,710 \$

PURE - FABRIC Pure is a 100% pure natural product made of 40% linen and 60% cotton. The vintage-look material means that every metre is unique and each piece of furniture can vary in colour and appearance. However, this merely enriches the look and gives the fabric its own unique character.



Pure - Fabric, Beige

4,710 \$

Select material and colour

LINEA - VELVET

Taken from the Latin language, Linea means line, reflecting the beautiful and distinctive exterior of this fabric. A fabric inspired by the corduroy-feel, Linea is both elegant and playful. With an incredibly soft tactility and extremely durable quality, exemplified in a Martindale value of 100.000, this fabric offers something truly spectacular. Linea is certified OEKO-TEX certified guaranteeing no hazardous chemicals are used.



Linea - Velvet,
Beige
4,710 \$



Linea - Velvet, Blue
4,710 \$



Linea - Velvet, Dark
Beige
4,710 \$



Linea - Velvet,
Green
4,710 \$



Linea - Velvet, Grey
4,710 \$



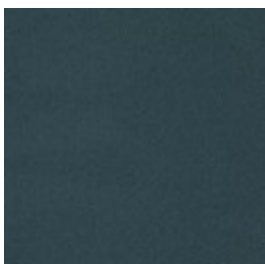
Linea - Velvet, Light
Grey
4,710 \$



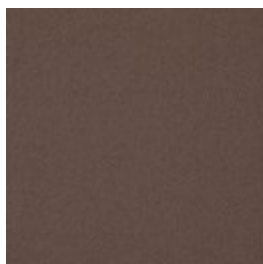
Linea - Velvet, Rosa
4,710 \$

GAJA C2C - WOOL

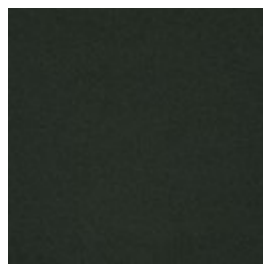
Gaja C2C is the first wool fabric with Cradle to Cradle Silver certification™. Cradle to Cradle is a certification where the designs are evaluated on the material's health, the recyclable properties of the material, the use of renewable energy, water management and social fairness on a larger scale. Gaja C2C is made of New Zealand wool and manufactured without the use of any hazardous chemicals. The fabric is also OEKO-TEX® certified and has been awarded the EU Ecolabel. Gaja C2C is our most sustainable furniture fabric, where every single choice has been made with consideration for the environment and our surroundings.



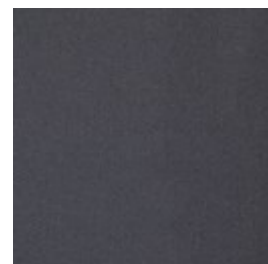
Gaja C2C - Wool,
Dark blue green
5,346 \$



Gaja C2C - Wool,
Dark brown
5,346 \$



Gaja C2C - Wool,
Dark green
5,346 \$



Gaja C2C - Wool,
Dark grey
5,346 \$

Select material and colour



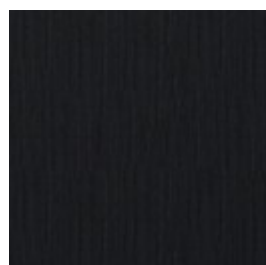
Gaja C2C - Wool,
Light Brown
5,346 \$



Gaja C2C - Wool,
Light Grey
5,346 \$

LAINÉ - WOOL

Laine is a very exclusive wool fabric consisting of 92% pure New Zealand wool and 8% polyamide. The elegant melange effect gives the fabric has a wonderfully vibrant look. Furthermore, it is Oeko-Tex certified and EU Eco-labelled.



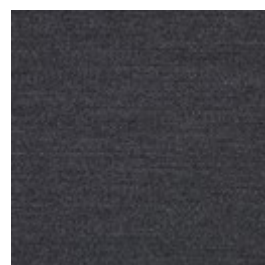
Laine - Wool,
Antracit
5,571 \$



Laine - Wool, Beige
5,571 \$



Laine - Wool, Dark
Blue
5,571 \$



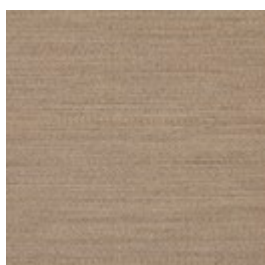
Laine - Wool, Dark
Grey
5,571 \$



Laine - Wool, Grey
5,571 \$



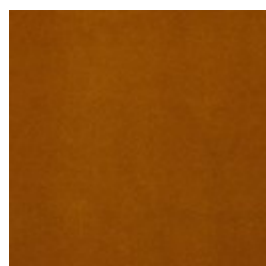
Laine - Wool, Light
Blue
5,571 \$



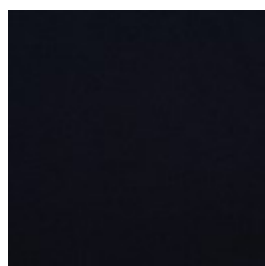
Laine - Wool, Light
Brown
5,571 \$

RITZ - VELOUR

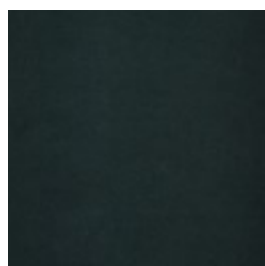
Ritz is a beautiful and velvety upholstery fabric. The velour fabric is exclusive in its appearance and its properties. Choose Ritz if you want a piece of furniture that stands out from the crowd.



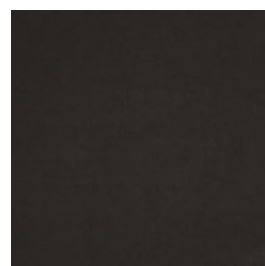
Ritz - Velour, Curry
5,571 \$



Ritz - Velour, Dark
Blue
5,571 \$



Ritz - Velour, Forest
Green
5,571 \$

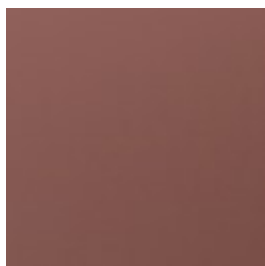


Ritz - Velour, Grey
5,571 \$

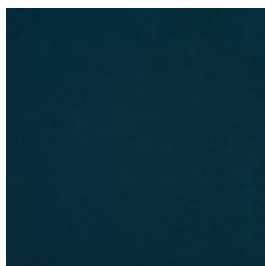
Select material and colour



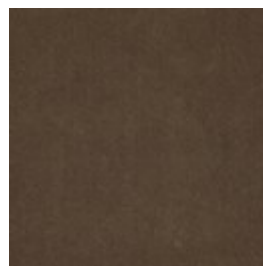
Ritz - Velour, Light
Grey
5,571 \$



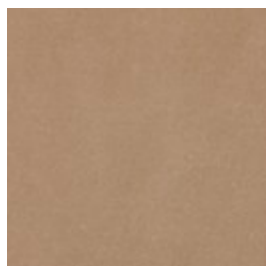
Ritz - Velour, Light
Rosa
5,571 \$



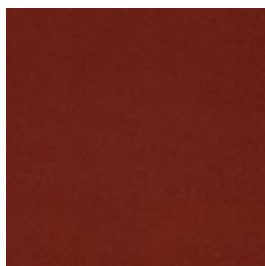
Ritz - Velour, Petrol
5,571 \$



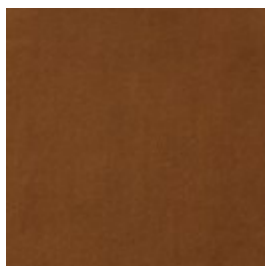
Ritz - Velour, Steel
Grey
5,571 \$



Ritz - Velour, Beige
5,571 \$



Ritz - Velour, Brick
Red
5,571 \$



Ritz - Velour, Camel
5,571 \$

MIRA - WOOL

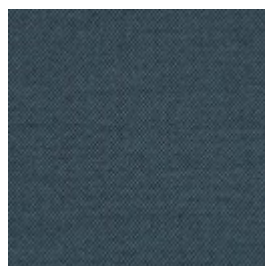
Mira is a 100% natural wool fabric with a melange effect that creates a dynamic interplay of colours. The firm structure is soft to the touch and the threads are fine with a close weave. Mira is a high quality wool fabric that is woven and inspected in Germany. Mira is also certified with the OEKO-TEX label, with an extremely high abrasion resistance.



Mira - Wool, Stone
Blue
5,571 \$



Mira - Wool, Terra
5,571 \$



Mira - Wool, Blue
5,571 \$



Mira - Wool, Dust
Green
5,571 \$



Mira - Wool, Grey
5,571 \$



Mira - Wool, Ivory
5,571 \$

Select material and colour

MONZA - FABRIC Monza is an OEKO-TEX certified fabric with a strong boucle tactility made from a mixture of natural and durable patterns like cotton and wool. A luxurious fabric with a strong and structured touch and expression stressed by the boucle texture where small nooses are combined to give that distinctive contour and feel. With Martindale of 80.000 and an excellent 7 on a scale from 2-8 in light fastness, Monza is sure to hold its form, colour and format for many years to come.



Monza - Fabric,
Beige
5,571 \$



Monza - Fabric,
Dark Beige
5,571 \$



Monza - Fabric,
Dark Grey
5,571 \$



Monza - Fabric,
Grey
5,571 \$



Monza - Fabric, Sea
Green
5,571 \$

Select legs



Black lacquered
steel
4,393 \$

We are here to help

Customer Care: Mon-Fri 09-21, Sat, Sun and holidays
10-16 (GMT+1)

Email: Customerservice@bolia.com

Phone: +45 88960225