

## Chloe 3 seater sofa bed



# Chloe

Make some room for spontaneity, expected and unexpected guests during the week, and at weekends, too. The Chloe sofa has lovely rounded edges, meticulous, emphasised stitching and a contemporary look with a real slatted bed frame that is just as inviting to sit on as it is to sleep on.

**5,919 \$**

**Hertel & Klarhoefer**

### Specification

**Cover**

Fawn, Light Grey

**Composition**

100% Polyester

**Width**

214 cm

**Depth**

116 cm

**Height**

86 cm

**Seat height**

45 cm

**Seat depth**

57 cm

**Unfolded measurement**

215 x 190 cm

**Mattress material**

Coldfoam

# Select material and colour

## FAWN - FABRIC

Fawn has a Scandinavian, natural look. The fabric is wonderfully soft and features a subtle play of colour. Fawn adds a minimalistic and simple look to your home.



Fawn - Fabric, Light Grey  
5,919 \$



Fawn - Fabric, Antracit  
5,919 \$



Fawn - Fabric, Green  
5,919 \$



Fawn - Fabric, Grey  
5,919 \$

## NANTES - FABRIC

Nantes is woven from 100% polyester and is an absolute bestseller. This stylish fabric featuring a visible structure is both stain-resistant and durable.



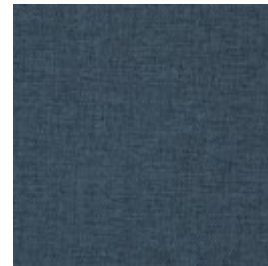
Nantes - Fabric, Antracit  
6,549 \$



Nantes - Fabric, Blue Grey  
6,549 \$



Nantes - Fabric, Dark green  
6,549 \$



Nantes - Fabric, Dust Blue  
6,549 \$



Nantes - Fabric, Grey  
6,549 \$



Nantes - Fabric, Light Beige  
6,549 \$



Nantes - Fabric, Light Blue  
6,549 \$



Nantes - Fabric, Light Grey  
6,549 \$



Nantes - Fabric, Multi Grey  
6,549 \$



Nantes - Fabric, Petrol  
6,549 \$



Nantes - Fabric, Sea Green  
6,549 \$



Nantes - Fabric, Stone Blue  
6,549 \$

# Select material and colour

## **SIRA - FABRIC**

Sira is a soft and comforting fabric made from 100% recycled cotton making it a natural, beautiful and sustainable choice. No new raw materials have been used, and the production is solely sponsored by solar or wind energy. Sira has a bold structure, yet incredibly soft feel. The heavy texture is complemented by the inviting touch that makes Sira a beautiful fabric - and even one of our most sustainable fabrics available.



Sira - Fabric, Beige

6,549 \$



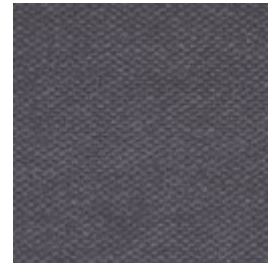
Sira - Fabric, Blue

6,549 \$



Sira - Fabric, Dark Beige

6,549 \$



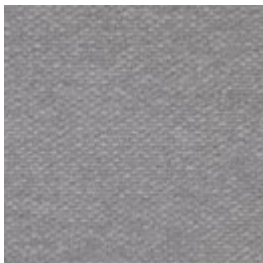
Sira - Fabric, Grey

6,549 \$



Sira - Fabric, Grey Brown

6,549 \$

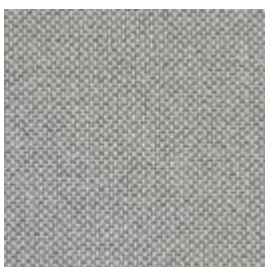


Sira - Fabric, Light Grey

6,549 \$

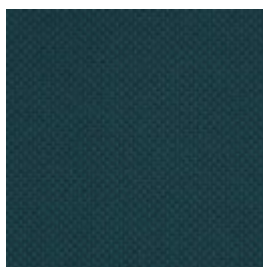
## **BERGO - FABRIC**

Bergo does something none of our other materials can do. It's made from recycled polyester made of plastic bottles. This ensures that no new raw materials are used and production focuses on minimising energy consumption and the use of biodegradable chemicals. Bergo is 100% free of heavy metals and is also certified according to the EU Ecolabel and Oeko-tex standards.



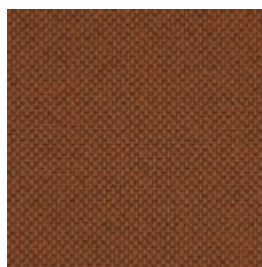
Bergo - Fabric, Light Grey

6,549 \$



Bergo - Fabric, Petrol

6,549 \$



Bergo - Fabric, Raw Amber

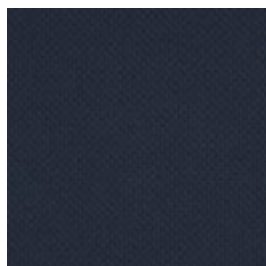
6,549 \$



Bergo - Fabric, Beige

6,549 \$

# Select material and colour



Bergo - Fabric,  
Dark Blue  
6,549 \$



Bergo - Fabric,  
Grey  
6,549 \$



Bergo - Fabric,  
Light Brown  
6,549 \$

## **BAIZE - FABRIC**

Baize is an extra soft upholstery fabric that provides superior comfort. The material has a beautiful, classic look that suits most furniture.



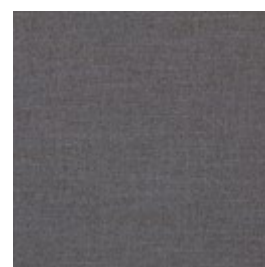
Baize - Fabric, Light  
Grey  
6,549 \$



Baize - Fabric, Sand  
6,549 \$



Baize - Fabric,  
Antracit  
6,549 \$



Baize - Fabric, Dark  
Grey  
6,549 \$



Baize - Fabric, Dust  
Blue  
6,549 \$



Baize - Fabric, Dust  
Green  
6,549 \$



Baize - Fabric, Grey  
6,549 \$

## **SOIL - FABRIC**

Soil is a flat-woven soft fabric made from 60% recycled bottles and is STANDARD 100 by OEKO-TEX®-certified. A strong and durable fabric with a sustainable outset.



Soil - Fabric, Dark  
green  
6,549 \$



Soil - Fabric, Green  
6,549 \$



Soil - Fabric, Light  
Grey  
6,549 \$



Soil - Fabric, Sand  
6,549 \$

## Select material and colour



Soil - Fabric, Dark  
Brown  
6,549 \$



Soil - Fabric, Dark  
Grey  
6,549 \$



Soil - Fabric, Stone  
Blue  
6,549 \$



Soil - Fabric, Rose  
Melange  
6,549 \$

### **PURE - FABRIC**

Pure is a 100% pure natural product made of 40% linen and 60% cotton. The vintage-look material means that every metre is unique and each piece of furniture can vary in colour and appearance. However, this merely enriches the look and gives the fabric its own unique character.



Pure - Fabric, Beige  
7,180 \$



Pure - Fabric, Dark  
Grey  
7,180 \$



Pure - Fabric, Grey  
7,180 \$



Pure - Fabric, Light  
Brown  
7,180 \$



Pure - Fabric, Light  
Grey  
7,180 \$



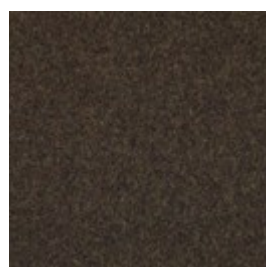
Pure - Fabric, Mint  
7,180 \$



Pure - Fabric, Sand  
7,180 \$

### **QUAL - WOOL**

Qual is woven from 100% pure new wool – specially developed for Bolia. The soft structure makes it comfortable and user-friendly. The wool's natural content of lanolin makes the fabric easy to keep clean.



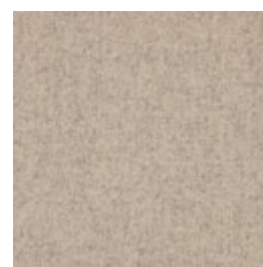
Qual - Wool, Army  
Melange  
7,180 \$



Qual - Wool, Blue  
Melange  
7,180 \$

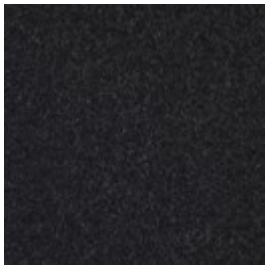


Qual - Wool, Curry  
Melange  
7,180 \$



Qual - Wool, Dark  
Beige  
7,180 \$

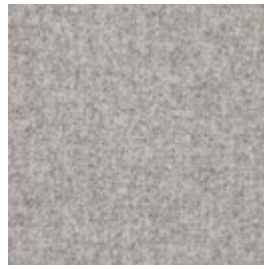
## Select material and colour



Qual - Wool, Dark  
Grey Melange  
7,180 \$



Qual - Wool, Grey  
Melange  
7,180 \$



Qual - Wool, Light  
Grey Melange  
7,180 \$



Qual - Wool, Mint  
Melange  
7,180 \$



Qual - Wool, Navy  
Melange  
7,180 \$



Qual - Wool, Rose  
Melange  
7,180 \$



Qual - Wool, Sand  
7,180 \$



Qual - Wool, Sea  
Green  
7,180 \$



Qual - Wool, Stone  
Grey  
7,180 \$

### **AXUS - FABRIC**

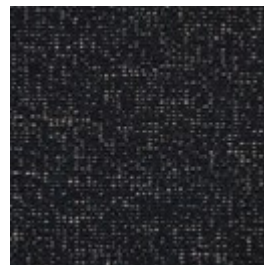
Axus is an environmentally-friendly choice. A gorgeous Italian upholstery fabric, with 32% made from recycled cotton and where the weaving mill uses solar power for a large proportion of its production to reduce CO2 emissions. Specially chosen to give you a beautiful and environmentally-friendly piece of furniture.



Axus - Fabric,  
Brown  
7,180 \$



Axus - Fabric,  
Burned Red  
7,180 \$



Axus - Fabric, Dark  
Blue  
7,180 \$



Axus - Fabric, Dark  
grey  
7,180 \$

# Select material and colour



Axus - Fabric,  
Green Grey  
7,180 \$

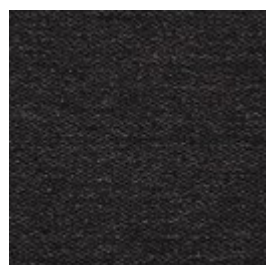


Axus - Fabric, Grey  
Yellow  
7,180 \$



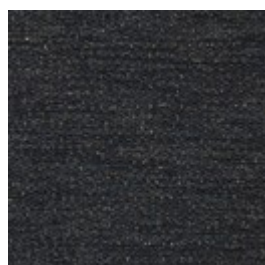
Axus - Fabric, Multi  
Grey  
7,180 \$

**MEMORY - FABRIC** - Memory is an upholstery toned with three colours that give the fabric a totally unique character. A durable and hard-wearing fabric with a beautiful and elegant structure that not only adds an exclusive look to any piece of furniture, but is also soft and comfortable to sit in.



Memory - Fabric,  
Antracit

7,180 \$



Memory - Fabric,  
Blue

7,180 \$

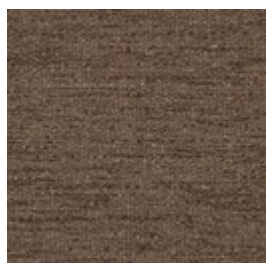


Memory - Fabric,  
Grey

7,180 \$



Memory  
- Fabric,  
Grey -  
White  
7,180 \$



Memory - Fabric,  
Light Brown  
7,180 \$



Memory - Fabric,  
Light Grey  
7,180 \$

# Select material and colour

**LONDON - FABRIC** - London is a strong upholstery fabric and comes in a variety of colors. It is a beautifully woven fabric with a pure and elegant look. London is 100% polyester.



London - Fabric,  
Mint  
7,180 \$



London - Fabric,  
Multi Grey  
7,180 \$



London - Fabric,  
Petrol  
7,180 \$



London - Fabric,  
Raw Amber  
7,180 \$



London - Fabric,  
Rosa  
7,180 \$



London - Fabric,  
Sea Green  
7,180 \$



London - Fabric,  
Dust Blue  
7,180 \$



London - Fabric,  
Dust Green  
7,180 \$



London - Fabric,  
Grey Brown  
7,180 \$



London - Fabric,  
Light Beige  
7,180 \$



London - Fabric,  
Light Blue  
7,180 \$



London - Fabric,  
Light Grey  
7,180 \$



London - Fabric,  
Blue  
7,180 \$



London - Fabric,  
Brown  
7,180 \$



London - Fabric,  
Burgundy  
7,180 \$



London - Fabric,  
Dark Grey  
7,180 \$



# Select material and colour

## LINEA - VELVET

Taken from the Latin language, Linea means line, reflecting the beautiful and distinctive exterior of this fabric. A fabric inspired by the corduroy-feel, Linea is both elegant and playful. With an incredibly soft tactility and extremely durable quality, exemplified in a Martindale value of 100.000, this fabric offers something truly spectacular. Linea is certified OEKO-TEX certified guaranteeing no hazardous chemicals are used.



Linea - Velvet, Light  
Grey  
7,180 \$



Linea - Velvet, Rosa  
7,180 \$



Linea - Velvet,  
Beige  
7,180 \$



Linea - Velvet, Blue  
7,180 \$



Linea - Velvet, Dark  
Beige  
7,180 \$



Linea - Velvet,  
Green  
7,180 \$



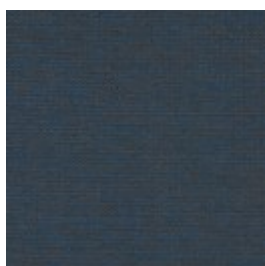
Linea - Velvet, Grey  
7,180 \$

## OCEAN - FABRIC

Ocean is a special furniture fabric with unique qualities that can be seen in the dye, where even the smallest parts are dyed before the threads are spun. This is a completely unique quality to Ocean, making it a fabric with incredibly high light fastness. Ocean has a soft surface structure and is 100% free of PFC, and manufactured without the use of water in production, which gives Ocean a more sustainable origin. Ocean is also certified to OEKO-TEX standards, which ensures the quality and durability.



Ocean - Fabric,  
Antracit  
7,180 \$



Ocean - Fabric,  
Dark Blue  
7,180 \$



Ocean - Fabric,  
Dark Grey  
7,180 \$



Ocean - Fabric,  
Grey  
7,180 \$

# Select material and colour



Ocean - Fabric,  
Light Grey  
7,180 \$



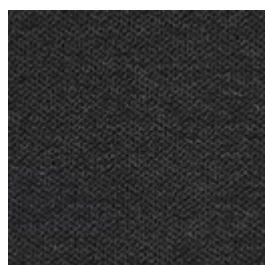
Ocean - Fabric,  
Sand  
7,180 \$

## **ASCOT - FABRIC**

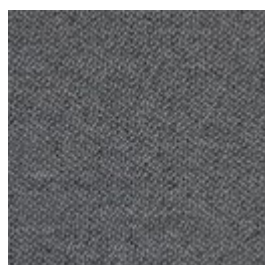
Ascot is a flat woven upholstery, with a rough texture and a soft surface. By combining synthetic, durable fibres with natural ones, Ascot combines the best of both worlds. Ascot upholstery is certified to OEKO-TEX standards and produced in accordance with the highest standards.



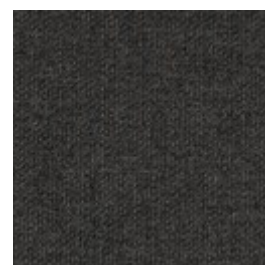
Ascot - Fabric,  
Beige  
7,638 \$



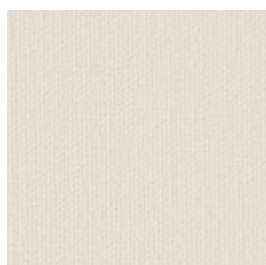
Ascot - Fabric,  
Charcoal  
7,638 \$



Ascot - Fabric, Grey  
7,638 \$



Ascot - Fabric, Grey  
Brown  
7,638 \$



Ascot - Fabric,  
Ivory  
7,638 \$



Ascot - Fabric,  
Light Grey  
7,638 \$

## Select material and colour

**MONZA - FABRIC** Monza is an OEKO-TEX certified fabric with a strong boucle tactility made from a mixture of natural and durable patterns like cotton and wool. A luxurious fabric with a strong and structured touch and expression stressed by the boucle texture where small nooses are combined to give that distinctive contour and feel. With Martindale of 80.000 and an excellent 7 on a scale from 2-8 in light fastness, Monza is sure to hold its form, colour and format for many years to come.



Monza - Fabric,  
Dark Grey  
9,739 \$



Monza - Fabric,  
Grey  
9,739 \$



Monza - Fabric, Sea  
Green  
9,739 \$



Monza - Fabric,  
Beige  
9,739 \$



Monza - Fabric,  
Dark Beige  
9,739 \$

**We are here to help**

Customer Care: Mon-Fri 09-21, Sat, Sun and holidays  
10-16 (GMT+1)

Email: [Customerservice@bolia.com](mailto:Customerservice@bolia.com)

Phone: +45 88960225