

Grace 2 seater sofa



Grace

Grace combines good craftsmanship and exceptional comfort with a soft design inspired by 1970s design aesthetics. The organic shapes are sharply cut, and the details are decorative, but kept to a minimum to create a pared-back yet soft appearance. Grace is also available with a loose back cushion, so you can play around with the design as well as making maintenance considerably easier. Design your own Grace sofa by choosing from several colours, furniture coverings and designs.

3,627 \$

Yonoh Creative Studio

Specification

Cover

Fawn, Light Grey

Depth

95 cm

Composition

100% Polyester

Height

78 cm

Base

Black lacquered steel

Seat height

43 cm

Width

188 cm

Seat depth

66 cm

Select material and colour

FAWN - FABRIC

Fawn has a Scandinavian, natural look. The fabric is wonderfully soft and features a subtle play of colour. Fawn adds a minimalistic and simple look to your home.



Fawn - Fabric,
Antracit
3,627 \$



Fawn - Fabric,
Green
3,627 \$



Fawn - Fabric, Grey
3,627 \$



Fawn - Fabric, Light
Grey
3,627 \$

BAIZE - FABRIC

Baize is an extra soft upholstery fabric that provides superior comfort. The material has a beautiful, classic look that suits most furniture.



Baize - Fabric,
Antracit
4,047 \$



Baize - Fabric, Dark
Grey
4,047 \$



Baize - Fabric, Dust
Blue
4,047 \$



Baize - Fabric, Dust
Green
4,047 \$



Baize - Fabric, Grey
4,047 \$



Baize - Fabric, Light
Grey
4,047 \$



Baize - Fabric, Sand
4,047 \$

Select material and colour

BERGO - FABRIC

Bergo does something none of our other materials can do. It's made from recycled polyester made of plastic bottles. This ensures that no new raw materials are used and production focuses on minimising energy consumption and the use of biodegradable chemicals. Bergo is 100% free of heavy metals and is also certified according to the EU Ecolabel and Oeko-tex standards.



Bergo - Fabric,
Petrol
4,047 \$



Bergo - Fabric, Raw
Amber
4,047 \$



Bergo - Fabric,
Beige
4,047 \$



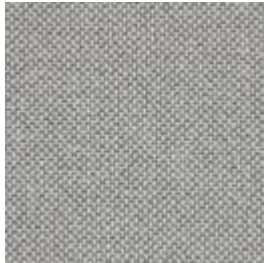
Bergo - Fabric,
Dark Blue
4,047 \$



Bergo - Fabric,
Grey
4,047 \$



Bergo - Fabric,
Light Brown
4,047 \$



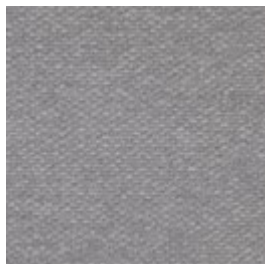
Bergo - Fabric,
Light Grey
4,047 \$

SIRA - FABRIC

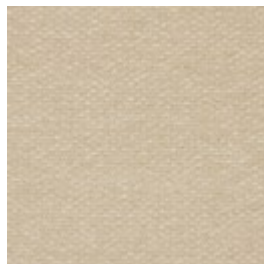
Sira is a soft and comforting fabric made from 100% recycled cotton making it a natural, beautiful and sustainable choice. No new raw materials have been used, and the production is solely sponsored by solar or wind energy. Sira has a bold structure, yet incredibly soft feel. The heavy texture is complemented by the inviting touch that makes Sira a beautiful fabric – and even one of our most sustainable fabrics available.



Sira - Fabric, Grey
Brown
4,047 \$



Sira - Fabric, Light
Grey
4,047 \$



Sira - Fabric, Beige
4,047 \$

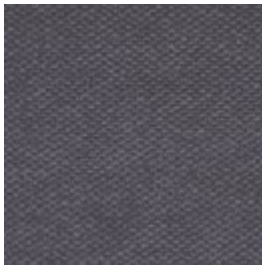


Sira - Fabric, Blue
4,047 \$

Select material and colour



Sira - Fabric, Dark
Beige
4,047 \$



Sira - Fabric, Grey
4,047 \$

SOIL - FABRIC

Soil is a flat-woven soft fabric made from 60% recycled bottles and is STANDARD 100 by OEKO-TEX®-certified. A strong and durable fabric with a sustainable outset.



Soil - Fabric, Dark
green
4,047 \$



Soil - Fabric, Green
4,047 \$



Soil - Fabric, Light
Grey
4,047 \$



Soil - Fabric, Sand
4,047 \$



Soil - Fabric, Dark
Brown
4,047 \$



Soil - Fabric, Dark
Grey
4,047 \$



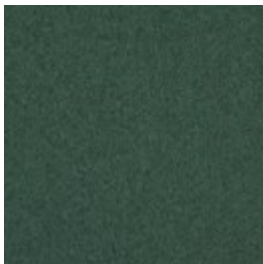
Soil - Fabric, Stone
Blue
4,047 \$



Soil - Fabric, Rose
Melange
4,047 \$

QUAL - WOOL

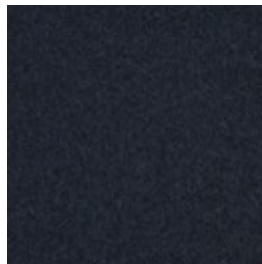
Qual is woven from 100% pure new wool – specially developed for Bolia. The soft structure makes it comfortable and user-friendly. The wool's natural content of lanolin makes the fabric easy to keep clean.



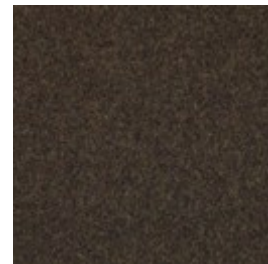
Qual - Wool, Sea
Green
4,332 \$



Qual - Wool, Stone
Grey
4,332 \$

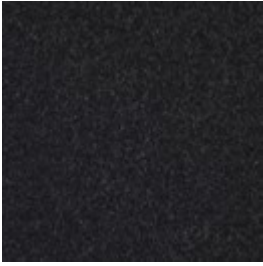


Qual - Wool, Navy
Melange
4,332 \$



Qual - Wool, Army
Melange
4,332 \$

Select material and colour



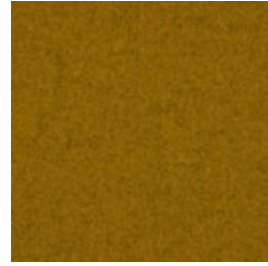
Qual - Wool, Dark
Grey Melange
4,332 \$



Qual - Wool, Grey
Melange
4,332 \$



Qual - Wool, Light
Grey Melange
4,332 \$



Qual - Wool, Curry
Melange
4,332 \$



Qual - Wool, Mint
Melange
4,332 \$



Qual - Wool, Rose
Melange
4,332 \$



Qual - Wool, Sand
4,332 \$



Qual - Wool, Blue
Melange
4,332 \$



Qual - Wool, Dark
Beige
4,332 \$

LONDON - FABRIC - London is a strong upholstery fabric and comes in a variety of colors. It is a beautifully woven fabric with a pure and elegant look. London is 100% polyester.



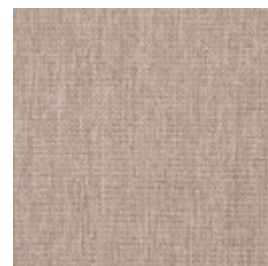
London - Fabric,
Dark Grey
4,332 \$



London - Fabric,
Dust Green
4,332 \$



London - Fabric,
Grey Brown
4,332 \$



London - Fabric,
Light Beige
4,332 \$

Select material and colour



London - Fabric,
Light Grey
4,332 \$



London - Fabric,
Blue
4,332 \$



London - Fabric,
Brown
4,332 \$



London - Fabric,
Burgundy
4,332 \$



London - Fabric,
Rosa
4,332 \$



London - Fabric,
Sea Green
4,332 \$



London - Fabric,
Mint
4,332 \$



London - Fabric,
Multi Grey
4,332 \$



London - Fabric,
Petrol
4,332 \$



London - Fabric,
Raw Amber
4,332 \$



London - Fabric,
Dust Blue
4,332 \$



London - Fabric,
Light Blue
4,332 \$

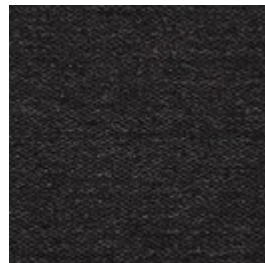
MEMORY - FABRIC - Memory is an upholstery toned with three colours that give the fabric a totally unique character. A durable and hard-wearing fabric with a beautiful and elegant structure that not only adds an exclusive look to any piece of furniture, but is also soft and comfortable to sit in.



Memory - Fabric,
Light Brown



Memory - Fabric,
Light Grey



Memory - Fabric,
Antracit

Memory
- Fabric,
Grey -
White
4,332 \$

4,332 \$

4,332 \$

4,332 \$

Select material and colour



Memory - Fabric,
Blue
4,332 \$



Memory - Fabric,
Grey
4,332 \$

AXUS - FABRIC

Axis is an environmentally-friendly choice. A gorgeous Italian upholstery fabric, with 32% made from recycled cotton and where the weaving mill uses solar power for a large proportion of its production to reduce CO2 emissions. Specially chosen to give you a beautiful and environmentally-friendly piece of furniture.



Axis - Fabric,
Brown
4,332 \$



Axis - Fabric,
Burned Red
4,332 \$



Axis - Fabric, Dark
Blue
4,332 \$



Axis - Fabric, Dark
grey
4,332 \$



Axis - Fabric,
Green Grey
4,332 \$



Axis - Fabric, Grey
Yellow
4,332 \$



Axis - Fabric, Multi
Grey
4,332 \$

Select material and colour

STEP MELANGE - FABRIC Step Melange features a vibrant and attractive interplay of colour with a luxurious melange effect. Step Melange is both OEKO-TEX certified and EU Ecolabelled, making it therefore a durable and beautiful furniture fabric. With a Martindale count of 100,000, the fabric is also suitable for both private and public use.



Step Melange -
Fabric, Light Grey

4,332 \$



Step Melange -
Fabric, Light Blue
Green

4,332 \$



Step Melange -
Fabric, Beige

4,332 \$



Step Melange -
Fabric, Dark grey

4,332 \$



Step Melange -
Fabric, Grey

4,332 \$



Step Melange -
Fabric, Grey Blue

4,332 \$

LINEA - VELVET Taken from the Latin language, Linea means line, reflecting the beautiful and distinctive exterior of this fabric. A fabric inspired by the corduroy-feel, Linea is both elegant and playful. With an incredibly soft tactility and extremely durable quality, exemplified in a Martindale value of 100.000, this fabric offers something truly spectacular. Linea is certified OEKO-TEX certified guaranteeing no hazardous chemicals are used.



Linea - Velvet, Grey

4,332 \$



Linea - Velvet, Light
Grey

4,332 \$



Linea - Velvet, Rosa

4,332 \$



Linea - Velvet,
Beige

4,332 \$

Select material and colour



Linea - Velvet, Blue
4,332 \$



Linea - Velvet, Dark Beige
4,332 \$



Linea - Velvet, Green
4,332 \$

**NOVEL -
VELOUR**

Novel is an elegant and soft velour with a luxurious '70s vibe. The soft fabric feels comfortable and brushes blissfully against your body. A sophisticated fabric that makes sure your furniture will get noticed.



Novel - Velour, Grey Brown
4,643 \$



Novel - Velour, Light Blue
4,643 \$



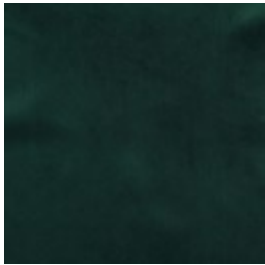
Novel - Velour, Beige
4,643 \$



Novel - Velour, Blue
4,643 \$



Novel - Velour, Green
4,643 \$



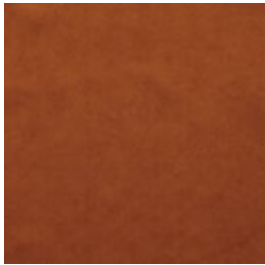
Novel - Velour, Dark green
4,643 \$



Novel - Velour, Stone Blue
4,643 \$



Novel - Velour, Bordeaux
4,643 \$



Novel - Velour, Cognac
4,643 \$



Novel - Velour, Light Grey
4,643 \$



Novel - Velour, Camel
4,643 \$



Novel - Velour, Dust green
4,643 \$

Select material and colour



Novel - Velour,
Light Beige
4,643 \$

GAJA C2C - WOOL

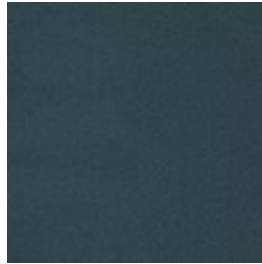
Gaja C2C is the first wool fabric with Cradle to Cradle Silver certification™. Cradle to Cradle is a certification where the designs are evaluated on the material's health, the recyclable properties of the material, the use of renewable energy, water management and social fairness on a larger scale. Gaja C2C is made of New Zealand wool and manufactured without the use of any hazardous chemicals. The fabric is also OEKO-TEX® certified and has been awarded the EU Ecolabel. Gaja C2C is our most sustainable furniture fabric, where every single choice has been made with consideration for the environment and our surroundings.



Gaja C2C - Wool,
Light Brown
4,643 \$



Gaja C2C - Wool,
Light Grey
4,643 \$



Gaja C2C - Wool,
Dark blue green
4,643 \$



Gaja C2C - Wool,
Dark brown
4,643 \$



Gaja C2C - Wool,
Dark green
4,643 \$



Gaja C2C - Wool,
Dark grey
4,643 \$

Select material and colour

ASCOT - FABRIC

Ascot is a flat woven upholstery, with a rough texture and a soft surface. By combining synthetic, durable fibres with natural ones, Ascot combines the best of both worlds. Ascot upholstery is certified to OEKO-TEX standards and produced in accordance with the highest standards.



Ascot - Fabric,
Ivory
4,643 \$



Ascot - Fabric,
Beige
4,643 \$



Ascot - Fabric, Grey
4,643 \$



Ascot - Fabric, Grey
Brown
4,643 \$



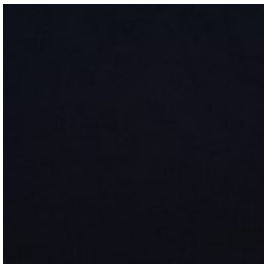
Ascot - Fabric,
Light Grey
4,643 \$



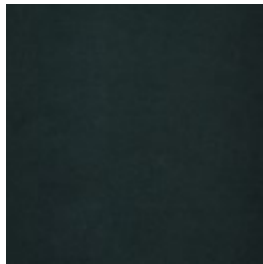
Ascot - Fabric,
Charcoal
4,643 \$

RITZ - VELOUR

Ritz is a beautiful and velvety upholstery fabric. The velour fabric is exclusive in its appearance and its properties. Choose Ritz if you want a piece of furniture that stands out from the crowd.



Ritz - Velour, Dark
Blue
5,146 \$



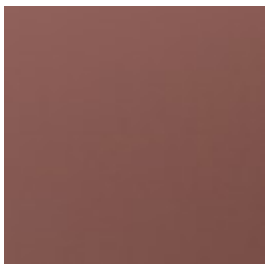
Ritz - Velour, Forest
Green
5,146 \$



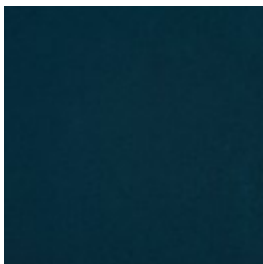
Ritz - Velour, Grey
5,146 \$



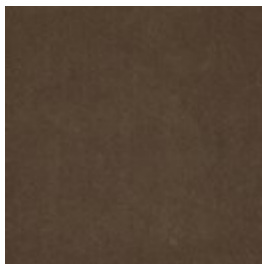
Ritz - Velour, Light
Grey
5,146 \$



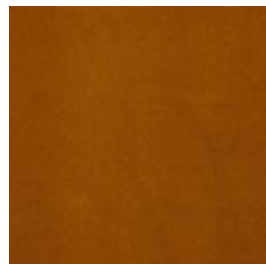
Ritz - Velour, Light
Rosa
5,146 \$



Ritz - Velour, Petrol
5,146 \$



Ritz - Velour, Steel
Grey
5,146 \$



Ritz - Velour, Curry
5,146 \$

Select material and colour



Ritz - Velour, Beige

5,146 \$



Ritz - Velour, Brick
Red

5,146 \$



Ritz - Velour, Camel

5,146 \$

LAINE - WOOL

Laine is a very exclusive wool fabric consisting of 92% pure New Zealand wool and 8% polyamide. The elegant melange effect gives the fabric has a wonderfully vibrant look. Furthermore, it is Oeko-Tex certified and EU Eco-labelled.



Laine - Wool, Grey

5,146 \$



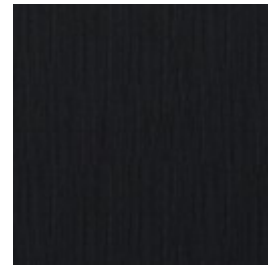
Laine - Wool, Light
Blue

5,146 \$



Laine - Wool, Light
Brown

5,146 \$



Laine - Wool,
Antracit

5,146 \$



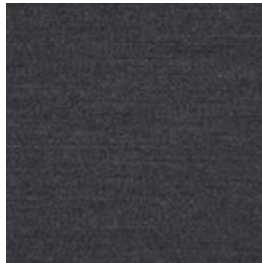
Laine - Wool, Beige

5,146 \$



Laine - Wool, Dark
Blue

5,146 \$



Laine - Wool, Dark
Grey

5,146 \$

Select material and colour

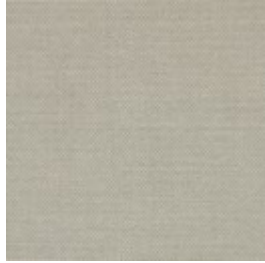
MIRA - WOOL

Mira is a 100% natural wool fabric with a melange effect that creates a dynamic interplay of colours. The firm structure is soft to the touch and the threads are fine with a close weave. Mira is a high quality wool fabric that is woven and inspected in Germany. Mira is also certified with the OEKO-TEX label, with an extremely high abrasion resistance.



Mira - Wool, Blue

5,146 \$



Mira - Wool, Dust
Green

5,146 \$



Mira - Wool, Grey

5,146 \$



Mira - Wool, Ivory

5,146 \$



Mira - Wool, Stone
Blue

5,146 \$



Mira - Wool, Terra

5,146 \$

Select material and colour

**MONZA -
FABRIC**

Monza is an OEKO-TEX certified fabric with a strong boucle tactility made from a mixture of natural and durable patterns like cotton and wool. A luxurious fabric with a strong and structured touch and expression stressed by the boucle texture where small nooses are combined to give that distinctive contour and feel. With Martindale of 80.000 and an excellent 7 on a scale from 2-8 in light fastness, Monza is sure to hold its form, colour and format for many years to come.



Monza - Fabric,
Grey
5,146 \$



Monza - Fabric, Sea
Green
5,146 \$



Monza - Fabric,
Beige
5,146 \$



Monza - Fabric,
Dark Beige
5,146 \$



Monza - Fabric,
Dark Grey
5,146 \$

We are here to help

Customer Care: Mon-Fri 09-21, Sat, Sun and holidays
10-16 (GMT+1)

Email: Customerservice@bolia.com

Phone: +45 88960225