

Paste armchair



Paste

The German design duo, BÖTTCHER & KAYSER, have designed Paste. A series of sofas, armchairs and poufs, offering an elegant yet contrasting design language. The sleek frame is highlighted by the soft curved cushions in high quality cold foam with fibre padding to create inviting comfort. The cushions on the sofa and armchair are kept in one piece, and the back cushion is zipped to the frame to ensure the cushions always stay in place. An elegant and functional detail that extends the life of the sofa and gives you flexible design options. Match with an accompanying pouf that shares the same elegant and voluminous design language for a cohesive impression and expression.



Böttcher & Kayser

2,366 \$

Specification

Cover

Fawn, Grey

Composition

100% Polyester

Depth

74 cm

Width

86 cm

Height

76 cm

Seat height

42 cm

Tests and certificates

GS - Tested safety

Base

Solid - Oiled oak

Select material and colour

FAWN - FABRIC

Fawn has a Scandinavian, natural look. The fabric is wonderfully soft and features a subtle play of colour. Fawn adds a minimalistic and simple look to your home. Instead, its printed colour technique gives Fawn its distinctive look, which is beautifully complemented by a genuine quality highlighted by its STANDARD 100 by OEKO-TEX® certification, which ensures that no dangerous chemicals are used in production.



Fawn - Fabric,
Antracit
2,366 \$



Fawn - Fabric,
Green
2,366 \$



Fawn - Fabric, Grey
2,366 \$



Fawn - Fabric, Light
Grey
2,366 \$

BAIZE - FABRIC

Baize is an extra soft upholstery fabric that provides superior comfort. The material has a beautiful, classic look that suits most furniture. Baize is also certified according to STANDARD 100 by OEKO-TEX®, which ensures that no dangerous chemicals or heavy metals are used in its production.



Baize - Fabric, Light
Grey
2,615 \$



Baize - Fabric, Sand
2,615 \$



Baize - Fabric,
Antracit
2,615 \$



Baize - Fabric, Dark
Grey
2,615 \$



Baize - Fabric, Dust
Blue
2,615 \$



Baize - Fabric, Dust
Green
2,615 \$



Baize - Fabric, Grey
2,615 \$

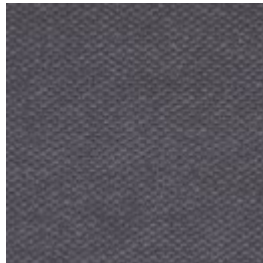
Select material and colour

SIRA - FABRIC

Sira is a soft and comforting fabric made from 100% recycled cotton making it a natural, beautiful and sustainable choice. No new raw materials have been used, and the production is solely sponsored by solar or wind energy. Sira has a bold structure, yet incredibly soft feel. The heavy texture is complemented by the inviting touch that makes Sira a beautiful fabric - and even one of our most sustainable fabrics available.



Sira - Fabric, Dark Beige
2,615 \$



Sira - Fabric, Grey
2,615 \$



Sira - Fabric, Grey Brown
2,615 \$



Sira - Fabric, Light Grey
2,615 \$



Sira - Fabric, Beige
2,615 \$



Sira - Fabric, Blue
2,615 \$

NANTES - FABRIC

Nantes is woven from 100% polyester and is an absolute bestseller. This stylish fabric featuring a visible structure is both stain-resistant and durable. Nantes is a timeless upholstery fabric that is STANDARD 100 by OEKO-TEX® certified and made to last.



Nantes - Fabric, Sea Green
2,615 \$



Nantes - Fabric, Stone Blue
2,615 \$



Nantes - Fabric, Grey
2,615 \$



Nantes - Fabric, Light Beige
2,615 \$

Select material and colour



Nantes - Fabric,
Light Blue
2,615 \$



Nantes - Fabric,
Light Grey
2,615 \$



Nantes - Fabric,
Multi Grey
2,615 \$



Nantes - Fabric,
Petrol
2,615 \$



Nantes - Fabric,
Antracit
2,615 \$



Nantes - Fabric,
Blue Grey
2,615 \$



Nantes - Fabric,
Dark green
2,615 \$



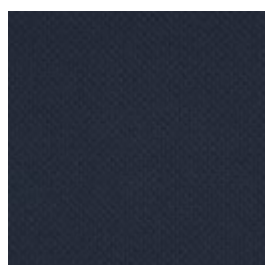
Nantes - Fabric,
Dust Blue
2,615 \$

BERGO - FABRIC

Bergo does something none of our other materials can do. It's made from recycled polyester made of plastic bottles. This ensures that no new raw materials are used and production focuses on minimising energy consumption and the use of biodegradable chemicals. Likewise, Bergo is free from heavy metals, has been awarded the EU Ecolabel and is STANDARD 100 by OEKO-TEX® certified.



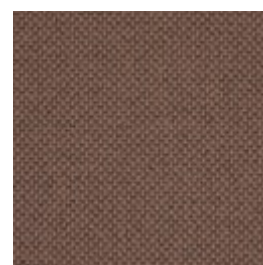
Bergo - Fabric,
Beige
2,615 \$



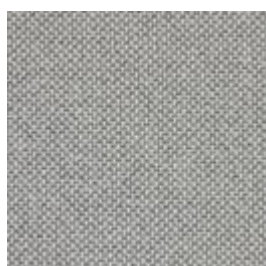
Bergo - Fabric,
Dark Blue
2,615 \$



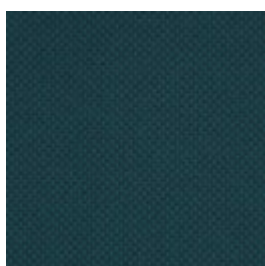
Bergo - Fabric,
Grey
2,615 \$



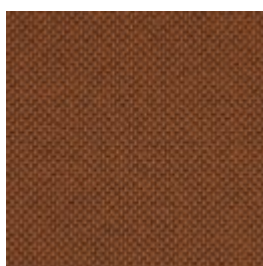
Bergo - Fabric,
Light Brown
2,615 \$



Bergo - Fabric,
Light Grey
2,615 \$



Bergo - Fabric,
Petrol
2,615 \$



Bergo - Fabric, Raw
Amber
2,615 \$

Select material and colour

SOIL - FABRIC

Soil is a flat-woven soft fabric made from 60% recycled bottles and is STANDARD 100 by OEKO-TEX®-certified. A strong and durable fabric with a sustainable outset.



Soil - Fabric, Dark green
2,615 \$



Soil - Fabric, Green
2,615 \$



Soil - Fabric, Light Grey
2,615 \$



Soil - Fabric, Sand
2,615 \$



Soil - Fabric, Dark Brown
2,615 \$



Soil - Fabric, Dark Grey
2,615 \$



Soil - Fabric, Stone Blue
2,615 \$



Soil - Fabric, Rose Melange
2,615 \$

LONDON - FABRIC

London is a strong upholstery fabric and comes in a variety of colors. It is a beautifully woven fabric with a pure and elegant look. London is 100% polyester. London is also manufactured without the use of dangerous chemicals and is STANDARD 100 by OEKO-TEX® certified.



London - Fabric, Light Grey
2,787 \$



London - Fabric, Mint
2,787 \$



London - Fabric, Multi Grey
2,787 \$



London - Fabric, Petrol
2,787 \$



London - Fabric, Raw Amber
2,787 \$



London - Fabric, Rosa
2,787 \$

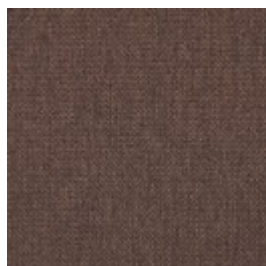


London - Fabric, Sea Green
2,787 \$



London - Fabric, Blue
2,787 \$

Select material and colour



London - Fabric,
Brown
2,787 \$



London - Fabric,
Burgundy
2,787 \$



London - Fabric,
Dark Grey
2,787 \$



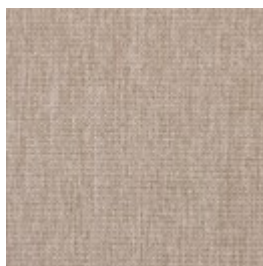
London - Fabric,
Dust Blue
2,787 \$



London - Fabric,
Dust Green
2,787 \$



London - Fabric,
Grey Brown
2,787 \$



London - Fabric,
Light Beige
2,787 \$



London - Fabric,
Light Blue
2,787 \$

AXUS - FABRIC

Axus is an environmentally-friendly choice. A gorgeous Italian upholstery fabric, with 32% made from recycled cotton and where the weaving mill uses solar power for a large proportion of its production to reduce CO2 emissions. Specially chosen to give you a beautiful and environmentally-friendly piece of furniture.



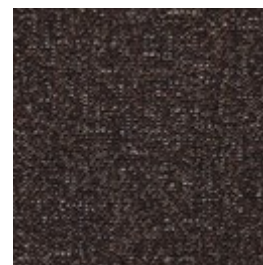
Axus - Fabric, Grey
Yellow
2,787 \$



Axus - Fabric, Multi
Grey
2,787 \$



Axus - Fabric,
Green Grey
2,787 \$



Axus - Fabric,
Brown
2,787 \$



Axus - Fabric,
Burned Red
2,787 \$



Axus - Fabric, Dark
Blue
2,787 \$



Axus - Fabric, Dark
grey
2,787 \$

Select material and colour

STEP MELANGE - FABRIC Step Melange features a vibrant and attractive interplay of colour with a luxurious melange effect. Step Melange is both OEKO-TEX certified and EU Ecolabelled, making it therefore a durable and beautiful furniture fabric. With a Martindale count of 100,000, the fabric is also suitable for both private and public use.



Step Melange -
Fabric, Grey

2,787 \$



Step Melange -
Fabric, Grey Blue

2,787 \$



Step Melange -
Fabric, Light Grey

2,787 \$



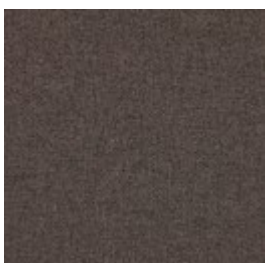
Step Melange -
Fabric, Light Blue
Green

2,787 \$



Step Melange -
Fabric, Beige

2,787 \$



Step Melange -
Fabric, Dark grey

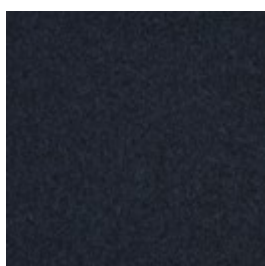
2,787 \$

QUAL - WOOL Qual is woven from 100% pure new wool – specially developed for Bolia. The soft structure makes it comfortable and user-friendly. The wool's natural content of lanolin makes the fabric easy to keep clean. The result is an upholstery fabric of exceptional quality, which is certified in accordance with STANDARD 100 by OEKO-TEX® and has the distinctive, rustic feel you would expect from a natural wool fabric such as Qual.



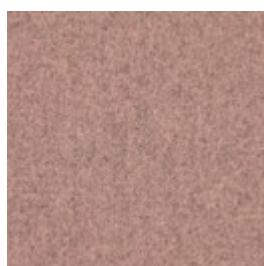
Qual - Wool, Mint
Melange

2,787 \$



Qual - Wool, Navy
Melange

2,787 \$



Qual - Wool, Rose
Melange

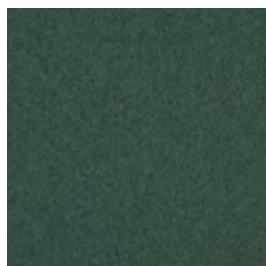
2,787 \$



Qual - Wool, Sand

2,787 \$

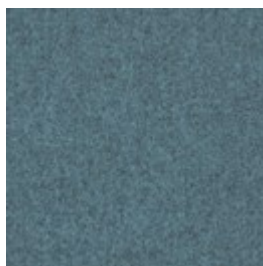
Select material and colour



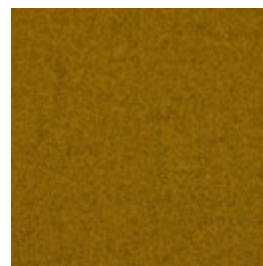
Qual - Wool, Sea Green
2,787 \$



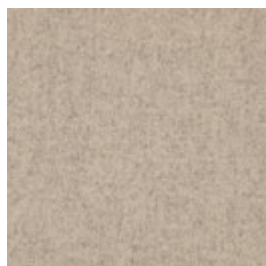
Qual - Wool, Stone Grey
2,787 \$



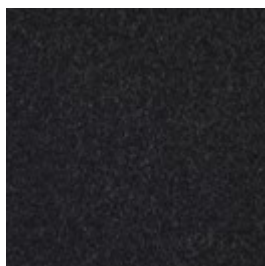
Qual - Wool, Blue Melange
2,787 \$



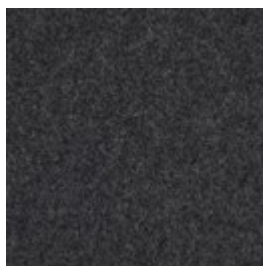
Qual - Wool, Curry Melange
2,787 \$



Qual - Wool, Dark Beige
2,787 \$



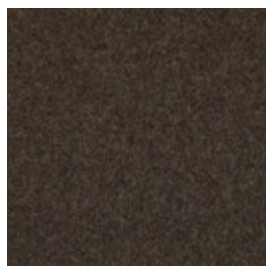
Qual - Wool, Dark Grey Melange
2,787 \$



Qual - Wool, Grey Melange
2,787 \$



Qual - Wool, Light Grey Melange
2,787 \$



Qual - Wool, Army Melange
2,787 \$

PURE - FABRIC

Pure is a 100% pure natural product made of 40% linen and 60% cotton. The vintage-look material means that every metre is unique and each piece of furniture can vary in colour and appearance. However, this merely enriches the look and gives the fabric its own unique character. It is precisely this complex interplay of colour that makes Pure such a unique upholstery fabric, highlighted by a STANDARD 100 by OEKO-TEX® certification that ensures no dangerous chemicals are used in production.



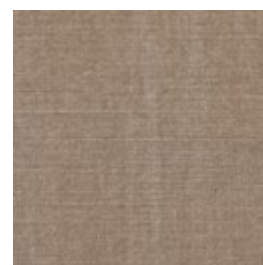
Pure - Fabric, Light Brown
2,787 \$



Pure - Fabric, Light Grey
2,787 \$



Pure - Fabric, Mint
2,787 \$



Pure - Fabric, Sand
2,787 \$

Select material and colour



Pure - Fabric, Grey

2,787 \$



Pure - Fabric, Beige

2,787 \$



Pure - Fabric, Dark
Grey

2,787 \$

OCEAN - FABRIC

Ocean is a special furniture fabric with unique qualities that can be seen in the dye, where even the smallest parts are dyed before the threads are spun. This is a completely unique quality to Ocean, making it a fabric with incredibly high light fastness. Ocean has a soft surface structure and is 100% free of PFC, and manufactured without the use of water in production, which gives Ocean a more sustainable origin. Ocean is also STANDARD 100 by OEKO-TEX® certified and produced without dangerous chemicals and heavy metals.



Ocean - Fabric,
Light Grey

2,787 \$



Ocean - Fabric,
Sand

2,787 \$



Ocean - Fabric,
Antracit

2,787 \$



Ocean - Fabric,
Dark Blue

2,787 \$



Ocean - Fabric,
Dark Grey

2,787 \$



Ocean - Fabric,
Grey

2,787 \$

Select material and colour

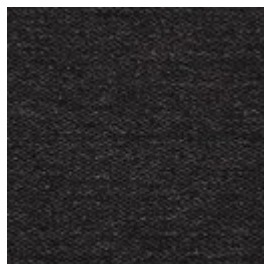
MEMORY - FABRIC - Memory is an upholstery toned with three colours that give the fabric a totally unique character. A durable and hard-wearing fabric with a beautiful and elegant structure that not only adds an exclusive look to any piece of furniture, but is also soft and comfortable to sit in. Memory is also STANDARD 100 by OEKO-TEX® certified.



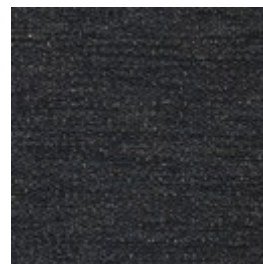
Memory - Fabric,
Light Brown
2,787 \$



Memory - Fabric,
Light Grey
2,787 \$



Memory - Fabric,
Antracit
2,787 \$



Memory - Fabric,
Blue
2,787 \$



Memory - Fabric,
Grey
2,787 \$



Memory
- Fabric,
Grey -
White
2,787 \$

LINEA - VELVET - Taken from the Latin language, Linea means line, reflecting the beautiful and distinctive exterior of this fabric. A fabric inspired by the corduroy-feel, Linea is both elegant and playful. With an incredibly soft tactility and extremely durable quality, exemplified in a Martindale value of 100.000, this fabric offers something truly spectacular. Linea is certified OEKO-TEX certified guaranteeing no hazardous chemicals are used.



Linea - Velvet,
Beige
2,787 \$



Linea - Velvet, Blue
2,787 \$



Linea - Velvet, Dark
Beige
2,787 \$



Linea - Velvet,
Green
2,787 \$

Select material and colour



Linea - Velvet, Grey

2,787 \$



Linea - Velvet, Light Grey

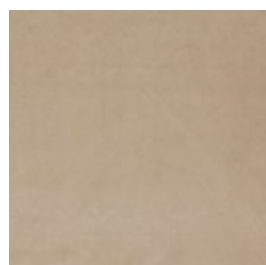
2,787 \$



Linea - Velvet, Rosa

2,787 \$

NOVEL - VELOUR Novel is an elegant and soft velour with a luxurious '70s vibe. The soft fabric feels comfortable and brushes blissfully against your body. A sophisticated fabric that makes sure your furniture will get noticed.



Novel - Velour,
Light Beige

3,054 \$



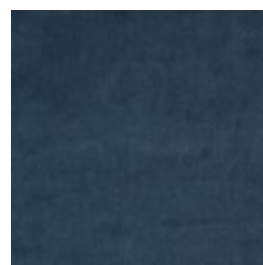
Novel - Velour,
Light Blue

3,054 \$



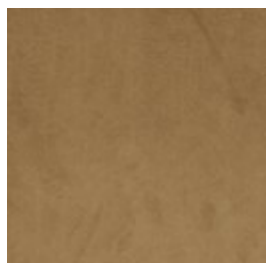
Novel - Velour,
Light Grey

3,054 \$



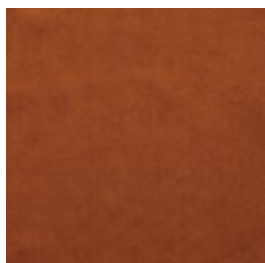
Novel - Velour,
Stone Blue

3,054 \$



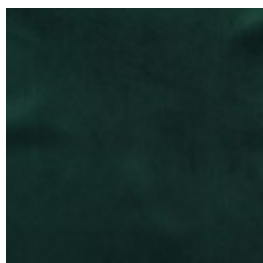
Novel - Velour,
Camel

3,054 \$



Novel - Velour,
Cognac

3,054 \$



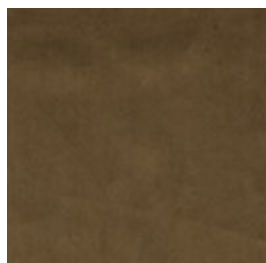
Novel - Velour, Dark
green

3,054 \$



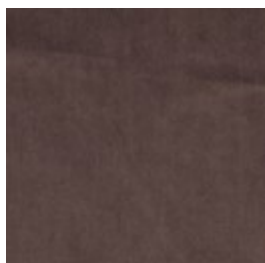
Novel - Velour, Dust
green

3,054 \$



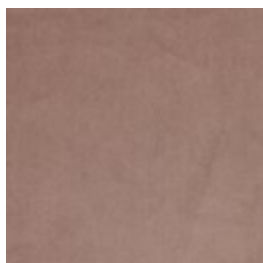
Novel - Velour,
Green

3,054 \$



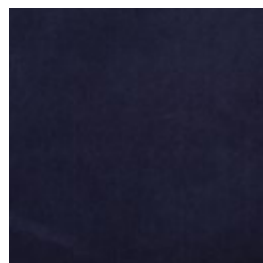
Novel - Velour, Grey
Brown

3,054 \$



Novel - Velour,
Beige

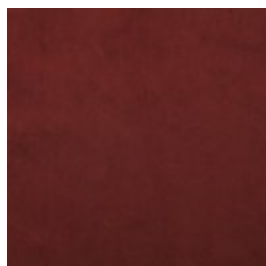
3,054 \$



Novel - Velour, Blue

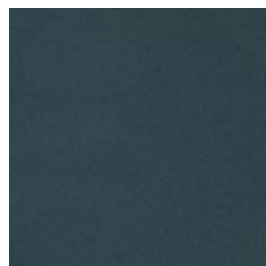
3,054 \$

Select material and colour

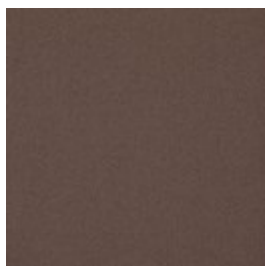


Novel - Velour,
Bordeaux
3,054 \$

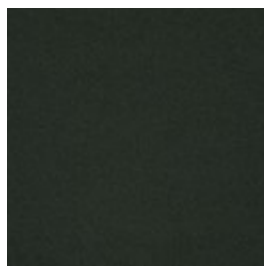
GAJA C2C - WOOL Gaja C2C is the first wool fabric with Cradle to Cradle Silver certification™. Cradle to Cradle is a certification where the designs are evaluated on the material's health, the recyclable properties of the material, the use of renewable energy, water management and social fairness on a larger scale. Gaja C2C is made of New Zealand wool and manufactured without the use of any hazardous chemicals. The fabric is also OEKO-TEX® certified and has been awarded the EU Ecolabel. Gaja C2C is our most sustainable furniture fabric, where every single choice has been made with consideration for the environment and our surroundings.



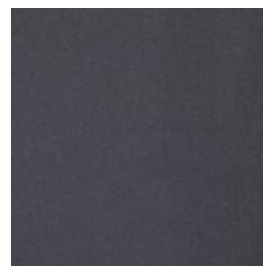
Gaja C2C - Wool,
Dark blue green
3,054 \$



Gaja C2C - Wool,
Dark brown
3,054 \$



Gaja C2C - Wool,
Dark green
3,054 \$



Gaja C2C - Wool,
Dark grey
3,054 \$



Gaja C2C - Wool,
Light Brown
3,054 \$



Gaja C2C - Wool,
Light Grey
3,054 \$

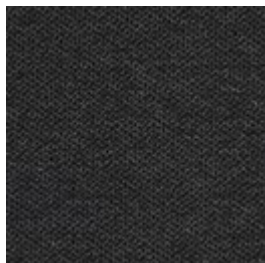
Select material and colour

ASCOT - FABRIC

Ascot is a flat woven upholstery, with a rough texture and a soft surface. By combining synthetic, durable fibres with natural ones, Ascot combines the best of both worlds. Ascot is STANDARD 100 by OEKO-TEX® certified and tested in accordance with the highest standards.



Ascot - Fabric,
Beige
3,054 \$



Ascot - Fabric,
Charcoal
3,054 \$



Ascot - Fabric, Grey
3,054 \$



Ascot - Fabric, Grey
Brown
3,054 \$



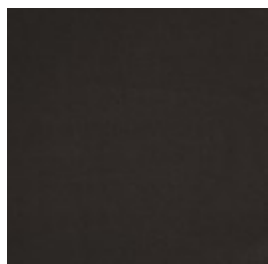
Ascot - Fabric,
Ivory
3,054 \$



Ascot - Fabric,
Light Grey
3,054 \$

RITZ - VELOUR

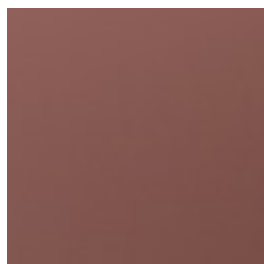
Ritz is a beautiful and velvety upholstery fabric. The velour fabric is exclusive in its appearance and its properties. Choose Ritz if you want a piece of furniture that stands out from the crowd.



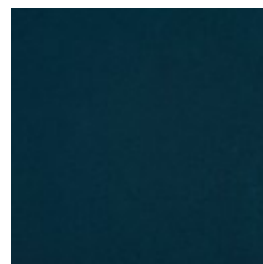
Ritz - Velour, Grey
3,436 \$



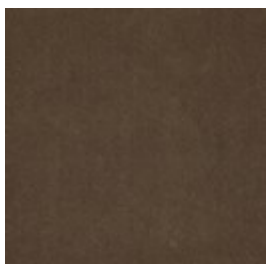
Ritz - Velour, Light
Grey
3,436 \$



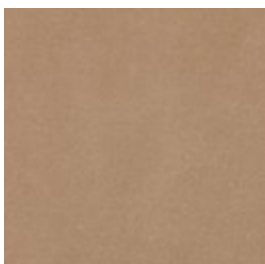
Ritz - Velour, Light
Rosa
3,436 \$



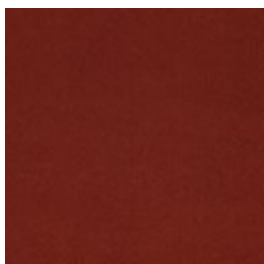
Ritz - Velour, Petrol
3,436 \$



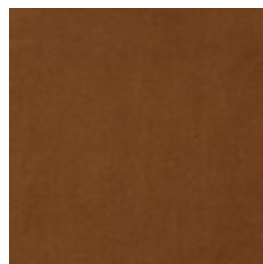
Ritz - Velour, Steel
Grey
3,436 \$



Ritz - Velour, Beige
3,436 \$

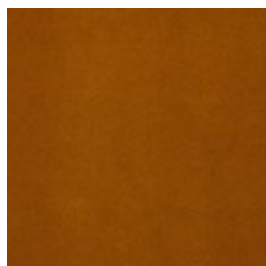


Ritz - Velour, Brick
Red
3,436 \$



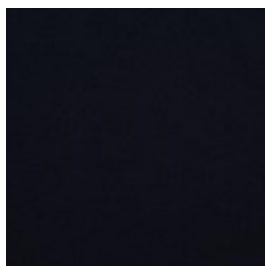
Ritz - Velour, Camel
3,436 \$

Select material and colour



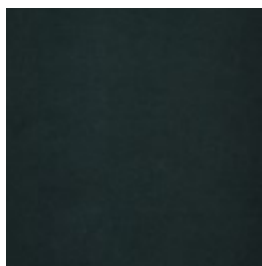
Ritz - Velour, Curry

3,436 \$



Ritz - Velour, Dark
Blue

3,436 \$



Ritz - Velour, Forest
Green

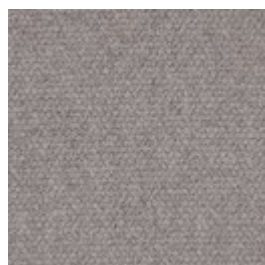
3,436 \$

MONZA - FABRIC - Monza is an OEKO-TEX certified fabric with a strong boucle tactility made from a mixture of natural and durable patterns like cotton and wool. A luxurious fabric with a strong and structured touch and expression stressed by the boucle texture where small nooses are combined to give that distinctive contour and feel. With Martindale of 80.000 and an excellent 7 on a scale from 2-8 in light fastness, Monza is sure to hold its form, colour and format for many years to come.



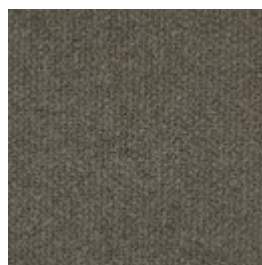
Monza - Fabric,
Dark Grey

3,436 \$



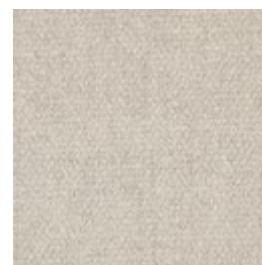
Monza - Fabric,
Grey

3,436 \$



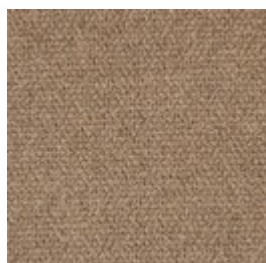
Monza - Fabric, Sea
Green

3,436 \$



Monza - Fabric,
Beige

3,436 \$



Monza - Fabric,
Dark Beige

3,436 \$

Select material and colour

MIRA - WOOL

Mira is a 100% natural wool fabric with a melange effect that creates a dynamic interplay of colours. The firm structure is soft to the touch and the threads are fine with a close weave. Mira is a high quality wool fabric that is woven and inspected in Germany. Mira is a high quality wool fabric that is STANDARD 100 by OEKO-TEX® certified with an incredibly high abrasion resistance.



Mira - Wool, Dust Green
3,436 \$



Mira - Wool, Grey
3,436 \$



Mira - Wool, Ivory
3,436 \$



Mira - Wool, Stone Blue
3,436 \$



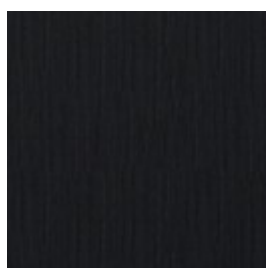
Mira - Wool, Terra
3,436 \$



Mira - Wool, Blue
3,436 \$

LAINÉ - WOOL

Laine is an exclusive wool fabric consisting of 92% pure wool from New Zealand. The fabric has a vibrant appearance with a stylish melange effect. The fabric is also STANDARD by OEKO-TEX® certified and has been awarded the EU Ecolabel.



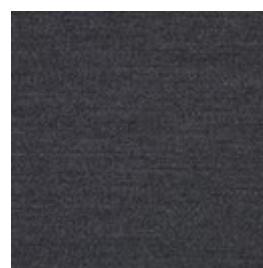
Laine - Wool, Antracit
3,436 \$



Laine - Wool, Beige
3,436 \$



Laine - Wool, Dark Blue
3,436 \$



Laine - Wool, Dark Grey
3,436 \$



Laine - Wool, Grey
3,436 \$



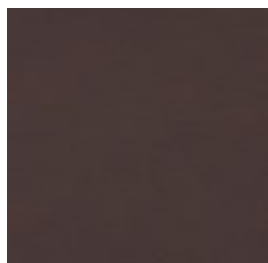
Laine - Wool, Light Blue
3,436 \$



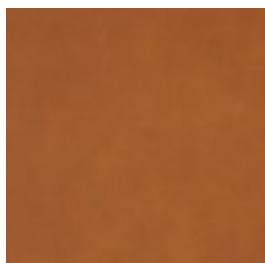
Laine - Wool, Light Brown
3,436 \$

Select material and colour

SYDNEY - LEATHER Sydney is an exclusive traceable leather from Australia with an elegant and soft touch. The tactility is incredibly soft while still holding a timeless feel. A breathable aniline leather with great qualities and durable traits. The surface structure is soft yet with a mat feel and invites your fingers to explore. A high-quality leather that due to its natural characters is light sensitive and can change colour if placed in direct sunlight, but cared for correctly, will become even more beautiful over the years.

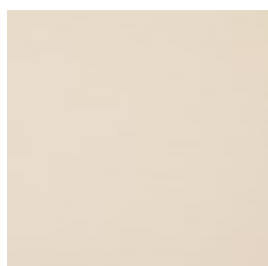


Sydney - Leather,
Mocca
4,869 \$

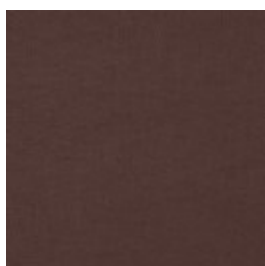


Sydney - Leather,
Cognac
4,869 \$

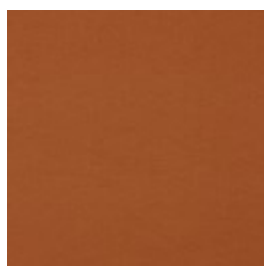
QUATTRO TRACEABLE - LEATHER Quality leather from European cattle. Quattro traceable leather is tanned without the use of chrome and can always be traced back to the cattle's area of origin. The leather is lightly surface treated and dyed, which ensures the appearance and colour of the leather.



Quattro Traceable -
Leather, White
4,869 \$



Quattro Traceable -
Leather, Brown
4,869 \$



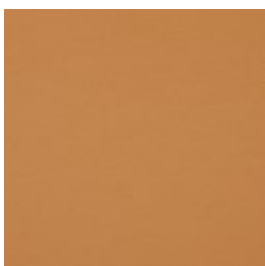
Quattro Traceable -
Leather, Cognac
4,869 \$



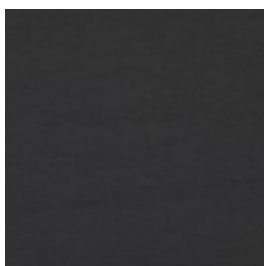
Quattro Traceable -
Leather, Dark
Brown
4,869 \$



Quattro Traceable -
Leather, Grey
4,869 \$



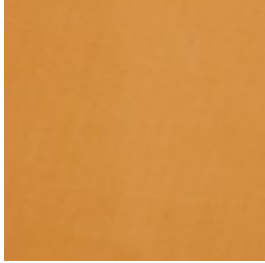
Quattro Traceable -
Leather, Nougat
4,869 \$



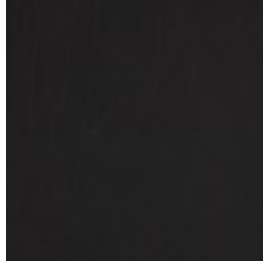
Quattro Traceable -
Leather, Black
4,869 \$

Select material and colour

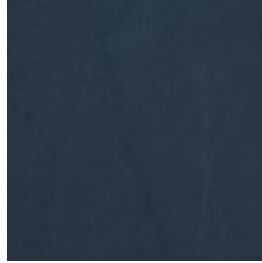
AUSTIN - LEATHER An exclusive, solid leather that's 100% traceable, with a soft and smooth surface, produced from the best European materials. The leather is breathable, which, alongside the other qualities, makes Austin bliss to sit in. And lie in. Austin is not surface treated and will therefore develop a beautiful patina over time.



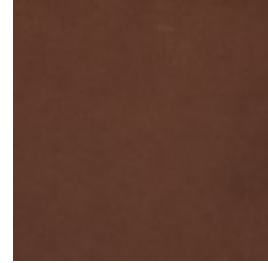
Austin - Leather,
Nature
6,397 \$



Austin - Leather,
Black
6,397 \$



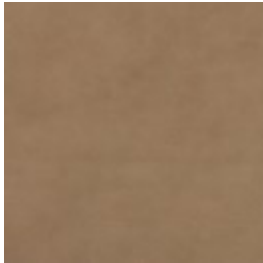
Austin - Leather,
Blue
6,397 \$



Austin - Leather,
Brown
6,397 \$



Austin - Leather,
Cognac
6,397 \$



Austin - Leather,
Grey
6,397 \$

Select legs



Black stained oak
2,366 \$



Oiled oak
2,366 \$



White pigmented
oiled oak
2,366 \$

We are here to help

Customer Care: Mon-Fri 09-21, Sat, Sun and holidays
10-16 (GMT+1)

Email: Customerservice@bolia.com

Phone: +45 88960225