

Scandinavia 2 seater sofa



Scandinavia

The Scandinavia sofa is a sofa classic designed by Glismand & Rüdiger. Its frame consists of solid wood from sustainable European forestry, while fabric cushions are upholstered on both sides, and the armrests have extra padding for superior comfort. Under the cushions you'll find an exclusive lining and a slightly elevated edge, which prevents the cushions from slipping off. The legs are available in several different materials and with two height options, while the cushions are available with both down and foam filling, and can be covered with wool, leather, velour or one of our numerous furniture fabrics. All resulting in a completely unique sofa, both in terms of production and appearance, and with a timeless quality that will be passed on through generations.

3,169 \$

Glismand & Rüdiger

Specification

Cover

Fawn, Light Grey

Depth

92 cm

Composition

100% Polyester

Height

78 cm

Filling

Down

Seat height

45 cm

Base Height

13 cm

Seat depth

57 cm

Width

176 cm

Tests and certificates

FSC™ C165134

Base

Oiled walnut - Solid

Select material and colour

FAWN - FABRIC

Fawn has a Scandinavian, natural look. The fabric is wonderfully soft and features a subtle play of colour. Fawn adds a minimalistic and simple look to your home. Instead, its printed colour technique gives Fawn its distinctive look, which is beautifully complemented by a genuine quality highlighted by its STANDARD 100 by OEKO-TEX® certification, which ensures that no dangerous chemicals are used in production.



Fawn - Fabric,
Antracit
3,169 \$



Fawn - Fabric,
Green
3,169 \$



Fawn - Fabric, Grey
3,169 \$



Fawn - Fabric, Light
Grey
3,169 \$

NANTES - FABRIC

Nantes is woven from 100% polyester and is an absolute bestseller. This stylish fabric featuring a visible structure is both stain-resistant and durable. Nantes is a timeless upholstery fabric that is STANDARD 100 by OEKO-TEX® certified and made to last.



Nantes - Fabric,
Multi Grey
3,921 \$



Nantes - Fabric,
Petrol
3,921 \$



Nantes - Fabric,
Sea Green
3,921 \$



Nantes - Fabric,
Stone Blue
3,921 \$



Nantes - Fabric,
Antracit
3,921 \$



Nantes - Fabric,
Blue Grey
3,921 \$



Nantes - Fabric,
Dark green
3,921 \$

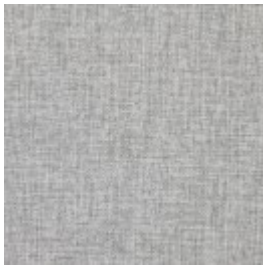


Nantes - Fabric,
Dust Blue
3,921 \$

Select material and colour



Nantes - Fabric,
Grey
3,921 \$



Nantes - Fabric,
Light Grey
3,921 \$



Nantes - Fabric,
Light Beige
3,921 \$



Nantes - Fabric,
Light Blue
3,921 \$

BAIZE - FABRIC

Baize is an extra soft upholstery fabric that provides superior comfort. The material has a beautiful, classic look that suits most furniture. Baize is also certified according to STANDARD 100 by OEKO-TEX®, which ensures that no dangerous chemicals or heavy metals are used in its production.



Baize - Fabric, Sand
3,921 \$



Baize - Fabric,
Antracit
3,921 \$



Baize - Fabric, Dark
Grey
3,921 \$



Baize - Fabric, Dust
Blue
3,921 \$



Baize - Fabric, Dust
Green
3,921 \$



Baize - Fabric, Grey
3,921 \$



Baize - Fabric, Light
Grey
3,921 \$

Select material and colour

BERGO - FABRIC

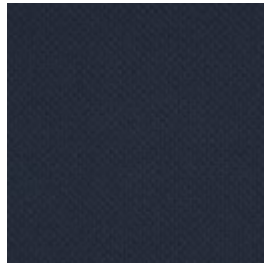
Bergo does something none of our other materials can do. It's made from recycled polyester made of plastic bottles. This ensures that no new raw materials are used and production focuses on minimising energy consumption and the use of biodegradable chemicals. Likewise, Bergo is free from heavy metals, has been awarded the EU Ecolabel and is STANDARD 100 by OEKO-TEX® certified.



Bergo - Fabric, Raw
Amber
3,921 \$



Bergo - Fabric,
Beige
3,921 \$



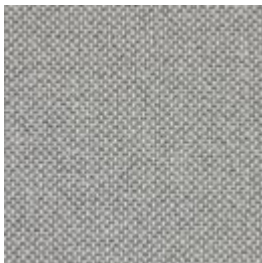
Bergo - Fabric,
Dark Blue
3,921 \$



Bergo - Fabric,
Grey
3,921 \$



Bergo - Fabric,
Light Brown
3,921 \$



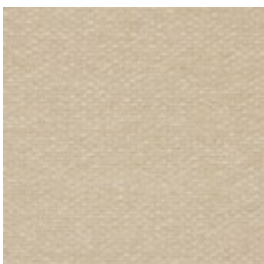
Bergo - Fabric,
Light Grey
3,921 \$



Bergo - Fabric,
Petrol
3,921 \$

SIRA - FABRIC

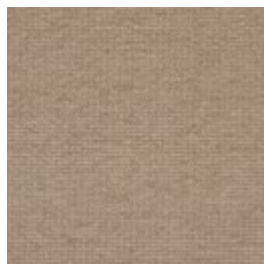
Sira is a soft and comforting fabric made from 100% recycled cotton making it a natural, beautiful and sustainable choice. No new raw materials have been used, and the production is solely sponsored by solar or wind energy. Sira has a bold structure, yet incredibly soft feel. The heavy texture is complemented by the inviting touch that makes Sira a beautiful fabric – and even one of our most sustainable fabrics available.



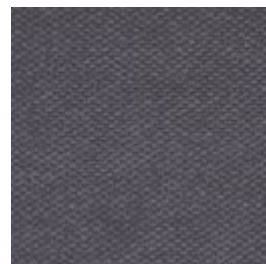
Sira - Fabric, Beige
3,921 \$



Sira - Fabric, Blue
3,921 \$



Sira - Fabric, Dark
Beige
3,921 \$

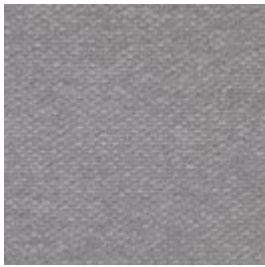


Sira - Fabric, Grey
3,921 \$

Select material and colour



Sira - Fabric, Grey
Brown
3,921 \$



Sira - Fabric, Light
Grey
3,921 \$

**PURE -
FABRIC**

Pure is a 100% pure natural product made of 40% linen and 60% cotton. The vintage-look material means that every metre is unique and each piece of furntiture can vary in colour and appearance. However, this merely enriches the look and gives the fabric its own unique character. It is precisely this complex interplay of colour that makes Pure such a unique upholstery fabric, highlighted by a STANDARD 100 by OEKO-TEX® certification that ensures no dangerous chemicals are used in production.



Pure - Fabric, Mint
4,236 \$



Pure - Fabric, Sand
4,236 \$



Pure - Fabric, Light
Grey
4,236 \$



Pure - Fabric, Dark
Grey
4,236 \$



Pure - Fabric, Grey
4,236 \$



Pure - Fabric, Light
Brown
4,236 \$



Pure - Fabric, Beige
4,236 \$

Select material and colour

QUAL - WOOL

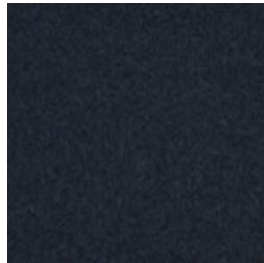
Qual is woven from 100% pure new wool – specially developed for Bolia. The soft structure makes it comfortable and user-friendly. The wool's natural content of lanolin makes the fabric easy to keep clean. The result is an upholstery fabric of exceptional quality, which is certified in accordance with STANDARD 100 by OEKO-TEX® and has the distinctive, rustic feel you would expect from a natural wool fabric such as Qual.



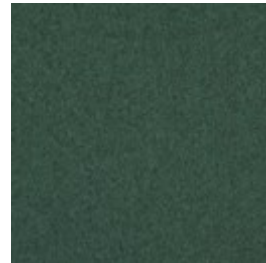
Qual - Wool, Grey
Melange
4,236 \$



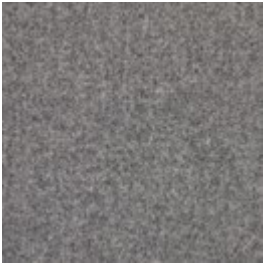
Qual - Wool, Light
Grey Melange
4,236 \$



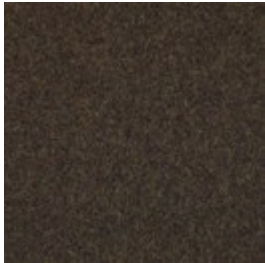
Qual - Wool, Navy
Melange
4,236 \$



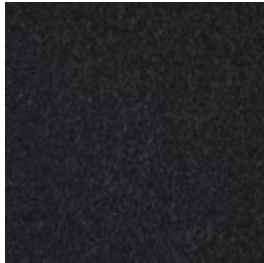
Qual - Wool, Sea
Green
4,236 \$



Qual - Wool, Stone
Grey
4,236 \$



Qual - Wool, Army
Melange
4,236 \$



Qual - Wool, Dark
Grey Melange
4,236 \$



Qual - Wool, Mint
Melange
4,236 \$



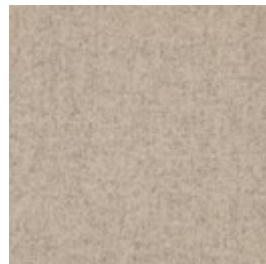
Qual - Wool, Rose
Melange
4,236 \$



Qual - Wool, Curry
Melange
4,236 \$



Qual - Wool, Sand
4,236 \$



Qual - Wool, Dark
Beige
4,236 \$



Qual - Wool, Blue
Melange
4,236 \$

Select material and colour

LONDON - FABRIC - London is a strong upholstery fabric and comes in a variety of colors. It is a beautifully woven fabric with a pure and elegant look. London is 100% polyester. London is also manufactured without the use of dangerous chemicals and is STANDARD 100 by OEKO-TEX® certified.



London - Fabric,
Light Grey
4,236 \$



London - Fabric,
Mint
4,236 \$



London - Fabric,
Multi Grey
4,236 \$



London - Fabric,
Rosa
4,236 \$



London - Fabric,
Sea Green
4,236 \$



London - Fabric,
Brown
4,236 \$



London - Fabric,
Burgundy
4,236 \$



London - Fabric,
Dark Grey
4,236 \$



London - Fabric,
Dust Green
4,236 \$



London - Fabric,
Grey Brown
4,236 \$



London - Fabric,
Light Beige
4,236 \$



London - Fabric,
Blue
4,236 \$



London - Fabric,
Petrol
4,236 \$



London - Fabric,
Raw Amber
4,236 \$



London - Fabric,
Dust Blue
4,236 \$



London - Fabric,
Light Blue
4,236 \$

Select material and colour

MEMORY - FABRIC - Memory is an upholstery toned with three colours that give the fabric a totally unique character. A durable and hard-wearing fabric with a beautiful and elegant structure that not only adds an exclusive look to any piece of furniture, but is also soft and comfortable to sit in. Memory is also STANDARD 100 by OEKO-TEX® certified.



Memory - Fabric,
Grey

4,236 \$



Memory
- Fabric,
Grey -
White

4,236 \$



Memory - Fabric,
Light Brown

4,236 \$



Memory - Fabric,
Light Grey

4,236 \$



Memory - Fabric,
Antracit
4,236 \$



Memory - Fabric,
Blue
4,236 \$

AXUS - FABRIC - Axus is an environmentally-friendly choice. A gorgeous Italian upholstery fabric, with 32% made from recycled cotton and where the weaving mill uses solar power for a large proportion of its production to reduce CO2 emissions. Specially chosen to give you a beautiful and environmentally-friendly piece of furniture.



Axus - Fabric,
Brown
4,236 \$



Axus - Fabric,
Burned Red
4,236 \$



Axus - Fabric,
Green Grey
4,236 \$



Axus - Fabric, Grey
Yellow
4,236 \$

Select material and colour



Axis - Fabric, Multi
Grey
4,236 \$



Axis - Fabric, Dark
Blue
4,236 \$



Axis - Fabric, Dark
grey
4,236 \$

OCEAN - FABRIC

Ocean is a special furniture fabric with unique qualities that can be seen in the dye, where even the smallest parts are dyed before the threads are spun. This is a completely unique quality to Ocean, making it a fabric with incredibly high light fastness. Ocean has a soft surface structure and is 100% free of PFC, and manufactured without the use of water in production, which gives Ocean a more sustainable origin. Ocean is also STANDARD 100 by OEKO-TEX® certified and produced without dangerous chemicals and heavy metals.



Ocean - Fabric,
Antracit
4,236 \$



Ocean - Fabric,
Dark Blue
4,236 \$



Ocean - Fabric,
Dark Grey
4,236 \$



Ocean - Fabric,
Grey
4,236 \$



Ocean - Fabric,
Light Grey
4,236 \$



Ocean - Fabric,
Sand
4,236 \$

Select material and colour

LINEA - VELVET

Taken from the Latin language, Linea means line, reflecting the beautiful and distinctive exterior of this fabric. A fabric inspired by the corduroy-feel, Linea is both elegant and playful. With an incredibly soft tactility and extremely durable quality, exemplified in a Martindale value of 100.000, this fabric offers something truly spectacular. Linea is certified OEKO-TEX certified guaranteeing no hazardous chemicals are used.



Linea - Velvet,
Beige
4,236 \$



Linea - Velvet, Blue
4,236 \$



Linea - Velvet, Dark
Beige
4,236 \$



Linea - Velvet,
Green
4,236 \$



Linea - Velvet, Grey
4,236 \$



Linea - Velvet, Light
Grey
4,236 \$



Linea - Velvet, Rosa
4,236 \$

STEP MELANGE - FABRIC

Step Melange features a vibrant and attractive interplay of colour with a luxurious melange effect. Step Melange is both OEKO-TEX certified and EU Ecolabelled, making it therefore a durable and beautiful furniture fabric. With a Martindale count of 100,000, the fabric is also suitable for both private and public use.



Step Melange -
Fabric, Beige
4,236 \$



Step Melange -
Fabric, Dark grey
4,236 \$



Step Melange -
Fabric, Grey
4,236 \$



Step Melange -
Fabric, Grey Blue
4,236 \$

Select material and colour



Step Melange -
Fabric, Light Grey

4,236 \$



Step Melange -
Fabric, Light Blue
Green

4,236 \$

**SOIL -
FABRIC**

Soil is a flat-woven soft fabric made from 60% recycled bottles and is STANDARD 100 by OEKO-TEX®-certified. A strong and durable fabric with a sustainable outset.



Soil - Fabric, Dark
green

4,236 \$



Soil - Fabric, Green

4,236 \$



Soil - Fabric, Light
Grey

4,236 \$



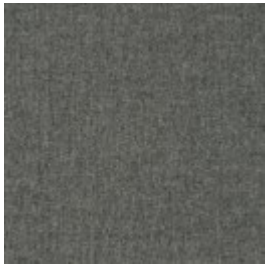
Soil - Fabric, Sand

4,236 \$



Soil - Fabric, Dark
Brown

4,236 \$



Soil - Fabric, Dark
Grey

4,236 \$



Soil - Fabric, Stone
Blue

4,236 \$



Soil - Fabric, Rose
Melange

4,236 \$

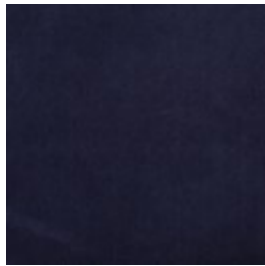
**NOVEL -
VELOUR**

Novel is an elegant and soft velour with a luxurious '70s vibe. The soft fabric feels comfortable and brushes blissfully against your body. A sophisticated fabric that makes sure your furniture will get noticed.



Novel - Velour,
Beige

4,611 \$



Novel - Velour, Blue

4,611 \$



Novel - Velour,
Green

4,611 \$



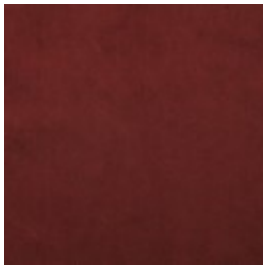
Novel - Velour, Grey
Brown

4,611 \$

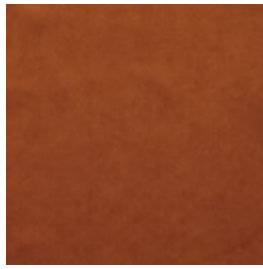
Select material and colour



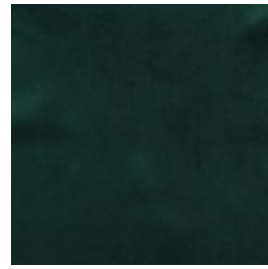
Novel - Velour,
Light Blue
4,611 \$



Novel - Velour,
Bordeaux
4,611 \$



Novel - Velour,
Cognac
4,611 \$



Novel - Velour, Dark
green
4,611 \$



Novel - Velour,
Stone Blue
4,611 \$



Novel - Velour,
Light Grey
4,611 \$



Novel - Velour,
Camel
4,611 \$



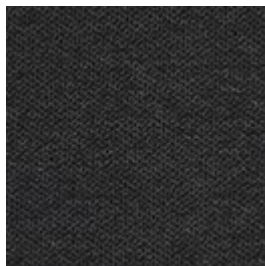
Novel - Velour, Dust
green
4,611 \$



Novel - Velour,
Light Beige
4,611 \$

ASCOT - FABRIC

Ascot is a flat woven upholstery, with a rough texture and a soft surface. By combining synthetic, durable fibres with natural ones, Ascot combines the best of both worlds. Ascot is STANDARD 100 by OEKO-TEX® certified and tested in accordance with the highest standards.



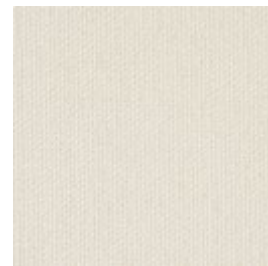
Ascot - Fabric,
Charcoal
4,611 \$



Ascot - Fabric, Grey
4,611 \$



Ascot - Fabric, Grey
Brown
4,611 \$



Ascot - Fabric,
Ivory
4,611 \$

Select material and colour



Ascot - Fabric,
Light Grey
4,611 \$



Ascot - Fabric,
Beige
4,611 \$

GAJA C2C - WOOL

Gaja C2C is the first wool fabric with Cradle to Cradle Silver certification™. Cradle to Cradle is a certification where the designs are evaluated on the material's health, the recyclable properties of the material, the use of renewable energy, water management and social fairness on a larger scale. Gaja C2C is made of New Zealand wool and manufactured without the use of any hazardous chemicals. The fabric is also OEKO-TEX® certified and has been awarded the EU Ecolabel. Gaja C2C is our most sustainable furniture fabric, where every single choice has been made with consideration for the environment and our surroundings.



Gaja C2C - Wool,
Dark blue green
4,611 \$



Gaja C2C - Wool,
Dark brown
4,611 \$



Gaja C2C - Wool,
Dark green
4,611 \$



Gaja C2C - Wool,
Dark grey
4,611 \$



Gaja C2C - Wool,
Light Brown
4,611 \$



Gaja C2C - Wool,
Light Grey
4,611 \$

Select material and colour

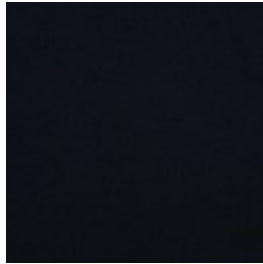
RITZ - VELOUR

Ritz is a beautiful and velvety upholstery fabric. The velour fabric is exclusive in its appearance and its properties. Choose Ritz if you want a piece of furniture that stands out from the crowd.



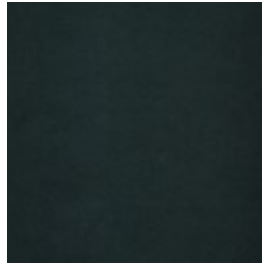
Ritz - Velour, Curry

5,999 \$



Ritz - Velour, Dark
Blue

5,999 \$



Ritz - Velour, Forest
Green

5,999 \$



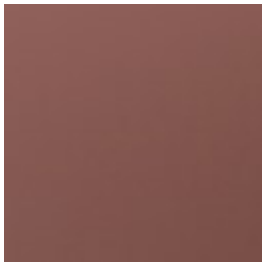
Ritz - Velour, Grey

5,999 \$



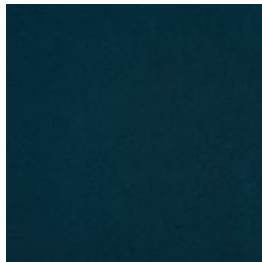
Ritz - Velour, Light
Grey

5,999 \$



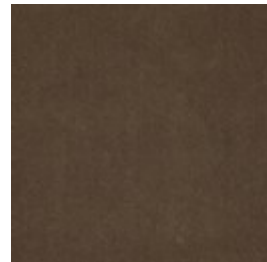
Ritz - Velour, Light
Rosa

5,999 \$



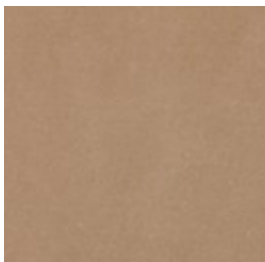
Ritz - Velour, Petrol

5,999 \$



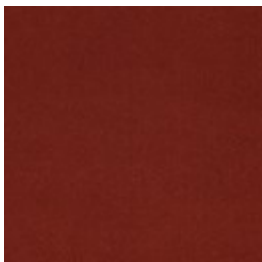
Ritz - Velour, Steel
Grey

5,999 \$



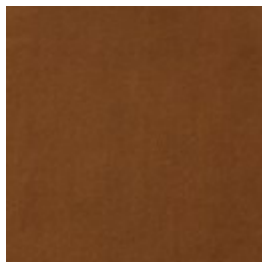
Ritz - Velour, Beige

5,999 \$



Ritz - Velour, Brick
Red

5,999 \$



Ritz - Velour, Camel

5,999 \$

LAINÉ - WOOL

Laine is an exclusive wool fabric consisting of 92% pure wool from New Zealand. The fabric has a vibrant appearance with a stylish melange effect. The fabric is also STANDARD by OEKO-TEX® certified and has been awarded the EU Ecolabel.



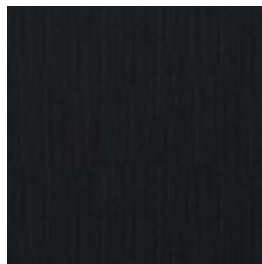
Laine - Wool, Light
Blue

5,999 \$



Laine - Wool, Light
Brown

5,999 \$



Laine - Wool,
Antracit

5,999 \$



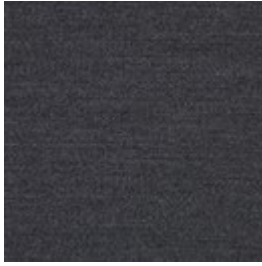
Laine - Wool, Beige

5,999 \$

Select material and colour



Laine - Wool, Dark
Blue
5,999 \$



Laine - Wool, Dark
Grey
5,999 \$



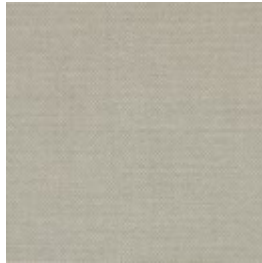
Laine - Wool, Grey
5,999 \$

MIRA - WOOL

Mira is a 100% natural wool fabric with a melange effect that creates a dynamic interplay of colours. The firm structure is soft to the touch and the threads are fine with a close weave. Mira is a high quality wool fabric that is woven and inspected in Germany. Mira is a high quality wool fabric that is STANDARD 100 by OEKO-TEX® certified with an incredibly high abrasion resistance.



Mira - Wool, Blue
5,999 \$



Mira - Wool, Dust
Green
5,999 \$



Mira - Wool, Grey
5,999 \$



Mira - Wool, Ivory
5,999 \$



Mira - Wool, Stone
Blue
5,999 \$



Mira - Wool, Terra
5,999 \$

Select material and colour

MONZA - FABRIC

Monza is an OEKO-TEX certified fabric with a strong boucle tactility made from a mixture of natural and durable patterns like cotton and wool. A luxurious fabric with a strong and structured touch and expression stressed by the boucle texture where small nooses are combined to give that distinctive contour and feel. With Martindale of 80.000 and an excellent 7 on a scale from 2-8 in light fastness, Monza is sure to hold its form, colour and format for many years to come.



Monza - Fabric,
Beige
5,999 \$



Monza - Fabric,
Dark Beige
5,999 \$



Monza - Fabric,
Dark Grey
5,999 \$



Monza - Fabric,
Grey
5,999 \$



Monza - Fabric, Sea
Green
5,999 \$

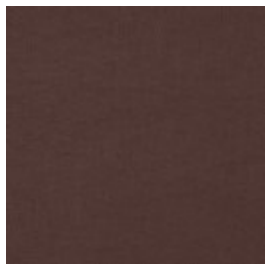
QUATTRO TRACEABLE - LEATHER

Quality leather from European cattle. Quattro traceable leather is tanned without the use of chrome and can always be traced back to the cattle's area of origin. The leather is lightly surface treated and dyed, which ensures the appearance and colour of the leather.



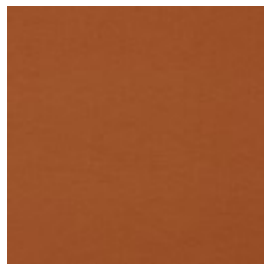
Quattro Traceable -
Leather, Black

6,240 \$



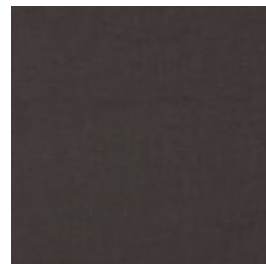
Quattro Traceable -
Leather, Brown

6,240 \$



Quattro Traceable -
Leather, Cognac

6,240 \$



Quattro Traceable -
Leather, Dark
Brown

6,240 \$

Select material and colour



Quattro Traceable -
Leather, Grey
6,240 \$



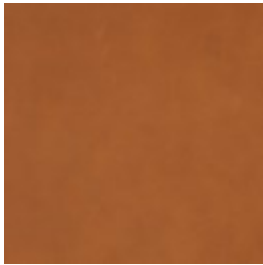
Quattro Traceable -
Leather, Nougat
6,240 \$



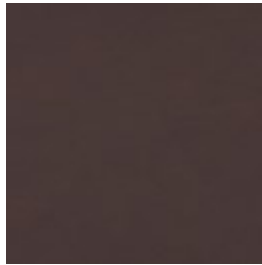
Quattro Traceable -
Leather, White
6,240 \$

SYDNEY - LEATHER

Sydney is an exclusive traceable leather from Australia with an elegant and soft touch. The tactility is incredibly soft while still holding a timeless feel. A breathable aniline leather with great qualities and durable traits. The surface structure is soft yet with a mat feel and invites your fingers to explore. A high-quality leather that due to its natural characters is light sensitive and can change colour if placed in direct sunlight, but cared for correctly, will become even more beautiful over the years.



Sydney - Leather,
Cognac
6,240 \$



Sydney - Leather,
Mocca
6,240 \$

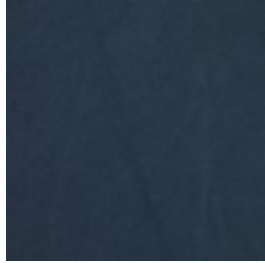
Select material and colour

AUSTIN - LEATHER

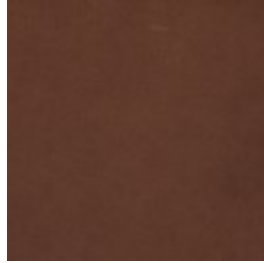
An exclusive, solid leather that's 100% traceable, with a soft and smooth surface, produced from the best European materials. The leather is breathable, which, alongside the other qualities, makes Austin bliss to sit in. And lie in. Austin is not surface treated and will therefore develop a beautiful patina over time.



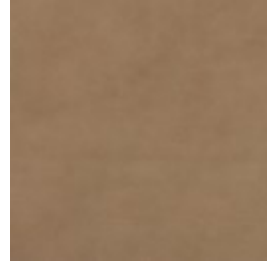
Austin - Leather,
Black
6,257 \$



Austin - Leather,
Blue
6,257 \$



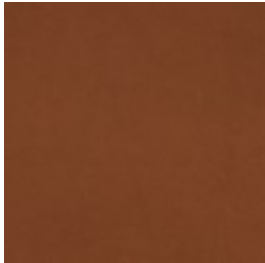
Austin - Leather,
Brown
6,257 \$



Austin - Leather,
Grey
6,257 \$



Austin - Leather,
Nature
6,257 \$



Austin - Leather,
Cognac
6,257 \$

Select filling



Down



Cold foam

Select legs



13 cm black stained
oak



15 cm black stained
oak



13 cm oiled oak



15 cm oiled oak



13 cm oiled walnut



15 cm oiled walnut



13 cm stainless steel



15 cm stainless steel



13 cm white
pigmented oiled
oak



15 cm white
pigmented oiled
oak

We are here to help

Customer Care: Mon-Fri 09-21, Sat, Sun and holidays
10-16 (GMT+1)

Email: Customerservice@bolia.com

Phone: +45 88960225