

Beaver upholstered dining chair



Beaver

Beaver is a series of modern dining chairs, bar stools and tables aimed at different functions, gatherings and formats. All designs brim with character and beautiful detail that testify to the quality craftsmanship. The iconic legs are designed at a slanting angle and feature a steel cross that ensures Beaver's legs remain firmly planted on the ground - for now and forever.



Says Who

953 \$

Specification

Cover

Step Melange, Light Grey

Width

41 cm

Composition

100% Trevira CS Polyester

Seat depth

37 cm

Base

Oiled oak

Seat height

47 cm

Height

82 cm

Type

Solid

Depth

42 cm

Select material and color

STEP MELANGE - FABRIC Step Melange features a vibrant and attractive interplay of colour with a luxurious melange effect. Step Melange is both OEKO-TEX certified and EU Ecolabelled, making it therefore a durable and beautiful furniture fabric. With a Martindale count of 100,000, the fabric is also suitable for both private and public use.



Step Melange -
Fabric, Dark grey
953 \$



Step Melange -
Fabric, Light Grey
953 \$

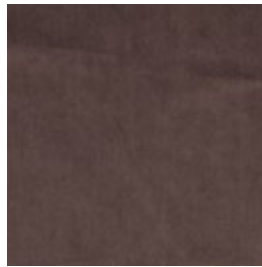
NOVEL - VELOUR Novel is an elegant and soft velour with a luxurious '70s vibe. The soft fabric feels comfortable and brushes blissfully against your body. A sophisticated fabric that makes sure your furniture will get noticed.



Novel - Velour, Blue
1,029 \$

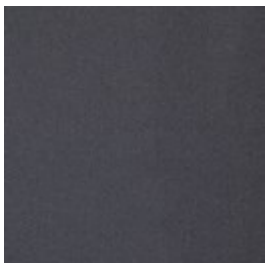


Novel - Velour,
Green
1,029 \$



Novel - Velour, Grey
Brown
1,029 \$

GAJA C2C - WOOL Gaja C2C is the first wool fabric with Cradle to Cradle Silver certification™. Cradle to Cradle is a certification where the designs are evaluated on the material's health, the recyclable properties of the material, the use of renewable energy, water management and social fairness on a larger scale. Gaja C2C is made of New Zealand wool and manufactured without the use of any hazardous chemicals. The fabric is also OEKO-TEX® certified and has been awarded the EU Ecolabel. Gaja C2C is our most sustainable furniture fabric, where every single choice has been made with consideration for the environment and our surroundings.



Gaja C2C - Wool,
Dark grey
1,029 \$



Gaja C2C - Wool,
Light Grey
1,029 \$

Select material and color

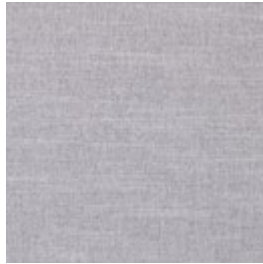
BAIZE - FABRIC

Baize is an extra soft upholstery fabric that provides superior comfort. The material has a beautiful, classic look that suits most furniture.



Baize - Fabric, Grey

1,106 \$



Baize - Fabric, Light Grey

1,106 \$



Baize - Fabric, Sand

1,106 \$

QUATTRO TRACEABLE - LEATHER

Quality leather from European cattle. Quattro traceable leather is tanned without the use of chrome and can always be traced back to the cattle's area of origin. The leather is lightly surface treated and dyed, which ensures the appearance and colour of the leather.



Quattro Traceable - Leather, Black

1,144 \$



Quattro Traceable - Leather, Cognac

1,144 \$

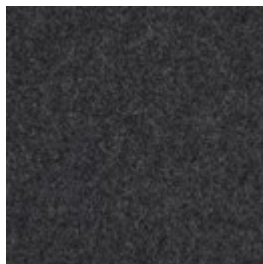
QUAL - WOOL

Qual is woven from 100% pure new wool – specially developed for Bolia. The soft structure makes it comfortable and user-friendly. The wool's natural content of lanolin makes the fabric easy to keep clean.



Qual - Wool, Stone Grey

1,144 \$



Qual - Wool, Grey Melange

1,144 \$



Qual - Wool, Light Grey Melange

1,144 \$

Select legs



Black stained oiled oak
953 \$



Oiled oak
953 \$



Oiled walnut
1,010 \$



Smoked oiled oak
953 \$



White pigmented oiled oak
953 \$

We are here to help

Customer Care: Mon-Fri 09-21, Sat, Sun and holidays
10-16 (GMT+1)

Email: Customerservice@bolia.com

Phone: +45 88960225