

Bullet armchair - Black



Bullet

BULLET gets its name from the 4 steel "cartridges" cut into the seat and backrest. Designed with a steel swivelling plinth and shell in tensioned wood, it provides fantastic seating comfort whilst being easy on the eye. It is handmade in Denmark with a first-class finish.

2,290 \$

Glismand & Rüdiger

Specification

Cover

Fawn, Light Grey

Width

65 cm

Composition

100% Polyester

Height

71 cm

Base

Black lacquered steel

Seat depth

51 cm

Seat

White oiled oak

Seat height

34 cm

Depth

74 cm

Select material and colour

FAWN - FABRIC

Fawn has a Scandinavian, natural look. The fabric is wonderfully soft and features a subtle play of colour. Fawn adds a minimalistic and simple look to your home.



Fawn - Fabric,
Antracit
2,290 \$



Fawn - Fabric,
Green
2,290 \$



Fawn - Fabric, Grey
2,290 \$



Fawn - Fabric, Light
Grey
2,290 \$



Fawn - Fabric,
Antracit
2,290 \$



Fawn - Fabric,
Green
2,290 \$



Fawn - Fabric, Grey
2,290 \$



Fawn - Fabric, Light
Grey
2,290 \$

NANTES - FABRIC

Nantes is woven from 100% polyester and is an absolute bestseller. This stylish fabric featuring a visible structure is both stain-resistant and durable.



Nantes - Fabric,
Dust Blue
2,638 \$



Nantes - Fabric,
Grey
2,638 \$



Nantes - Fabric,
Light Grey
2,638 \$



Nantes - Fabric,
Multi Grey
2,638 \$



Nantes - Fabric,
Petrol
2,638 \$



Nantes - Fabric,
Sea Green
2,638 \$



Nantes - Fabric,
Stone Blue
2,638 \$



Nantes - Fabric,
Antracit
2,638 \$

Select material and colour



Nantes - Fabric,
Antracit
2,638 \$



Nantes - Fabric,
Blue Grey
2,638 \$



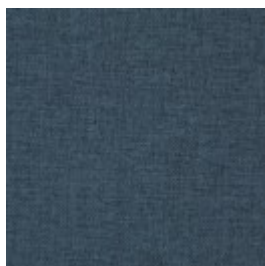
Nantes - Fabric,
Dark green
2,638 \$



Nantes - Fabric,
Blue Grey
2,638 \$



Nantes - Fabric,
Dark green
2,638 \$



Nantes - Fabric,
Dust Blue
2,638 \$



Nantes - Fabric,
Grey
2,638 \$



Nantes - Fabric,
Light Grey
2,638 \$



Nantes - Fabric,
Multi Grey
2,638 \$



Nantes - Fabric,
Petrol
2,638 \$



Nantes - Fabric,
Sea Green
2,638 \$



Nantes - Fabric,
Stone Blue
2,638 \$

BAIZE - FABRIC

Baize is an extra soft upholstery fabric that provides superior comfort. The material has a beautiful, classic look that suits most furniture.



Baize - Fabric,
Antracit
2,638 \$



Baize - Fabric, Dark
Grey
2,638 \$



Baize - Fabric, Dust
Blue
2,638 \$



Baize - Fabric, Dust
Green
2,638 \$

Select material and colour



Baize - Fabric, Grey

2,638 \$



Baize - Fabric, Light Grey

2,638 \$



Baize - Fabric, Sand

2,638 \$



Baize - Fabric, Antracit

2,638 \$



Baize - Fabric, Dark Grey

2,638 \$



Baize - Fabric, Dust Blue

2,638 \$



Baize - Fabric, Dust Green

2,638 \$



Baize - Fabric, Grey

2,638 \$



Baize - Fabric, Light Grey

2,638 \$

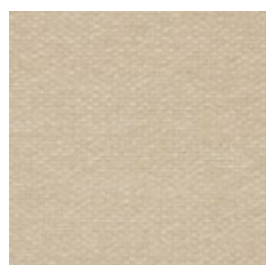


Baize - Fabric, Sand

2,638 \$

SIRA - FABRIC

Sira is a soft and comforting fabric made from 100% recycled cotton making it a natural, beautiful and sustainable choice. No new raw materials have been used, and the production is solely sponsored by solar or wind energy. Sira has a bold structure, yet incredibly soft feel. The heavy texture is complemented by the inviting touch that makes Sira a beautiful fabric - and even one of our most sustainable fabrics available.



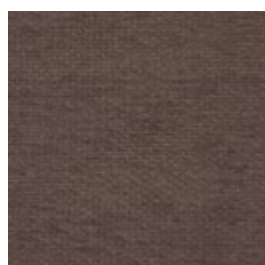
Sira - Fabric, Beige

2,638 \$



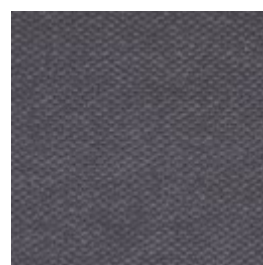
Sira - Fabric, Light Grey

2,638 \$



Sira - Fabric, Grey Brown

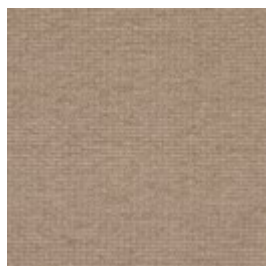
2,638 \$



Sira - Fabric, Grey

2,638 \$

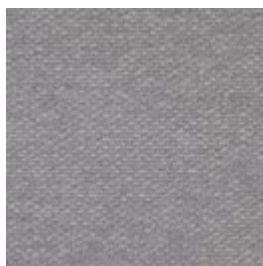
Select material and colour



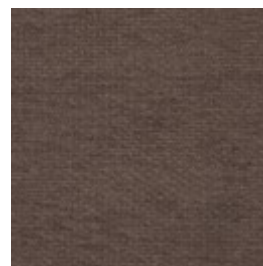
Sira - Fabric, Dark
Beige
2,638 \$



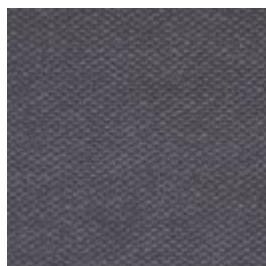
Sira - Fabric, Blue
2,638 \$



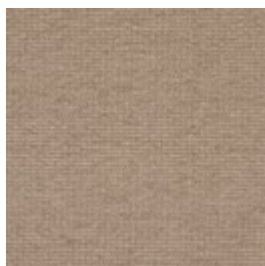
Sira - Fabric, Light
Grey
2,638 \$



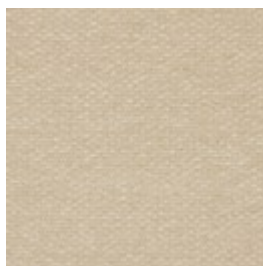
Sira - Fabric, Grey
Brown
2,638 \$



Sira - Fabric, Grey
2,638 \$



Sira - Fabric, Dark
Beige
2,638 \$



Sira - Fabric, Beige
2,638 \$



Sira - Fabric, Blue
2,638 \$

PURE - FABRIC

Pure is a 100% pure natural product made of 40% linen and 60% cotton. The vintage-look material means that every metre is unique and each piece of furniture can vary in colour and appearance. However, this merely enriches the look and gives the fabric its own unique character.



Pure - Fabric, Sand
2,731 \$



Pure - Fabric, Dark
Grey
2,731 \$



Pure - Fabric, Grey
2,731 \$



Pure - Fabric, Light
Brown
2,731 \$



Pure - Fabric, Light
Grey
2,731 \$



Pure - Fabric, Mint
2,731 \$



Pure - Fabric, Sand
2,731 \$



Pure - Fabric, Dark
Grey
2,731 \$

Select material and colour



Pure - Fabric, Grey

2,731 \$



Pure - Fabric, Light Brown

2,731 \$



Pure - Fabric, Light Grey

2,731 \$



Pure - Fabric, Mint

2,731 \$



Pure - Fabric, Beige

2,731 \$



Pure - Fabric, Beige

2,731 \$

LONDON - FABRIC - London is a strong upholstery fabric and comes in a variety of colors. It is a beautifully woven fabric with a pure and elegant look. London is 100% polyester.



London - Fabric, Blue

2,731 \$



London - Fabric, Brown

2,731 \$



London - Fabric, Burgundy

2,731 \$



London - Fabric, Dark Grey

2,731 \$



London - Fabric, Dust Green

2,731 \$



London - Fabric, Grey Brown

2,731 \$



London - Fabric, Light Beige

2,731 \$



London - Fabric, Light Grey

2,731 \$

Select material and colour



London - Fabric,
Mint
2,731 \$



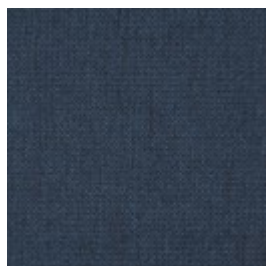
London - Fabric,
Multi Grey
2,731 \$



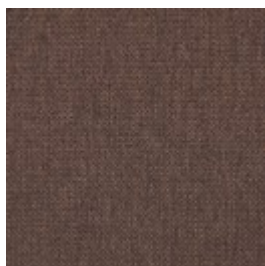
London - Fabric,
Rosa
2,731 \$



London - Fabric,
Sea Green
2,731 \$



London - Fabric,
Blue
2,731 \$



London - Fabric,
Brown
2,731 \$



London - Fabric,
Burgundy
2,731 \$



London - Fabric,
Dark Grey
2,731 \$



London - Fabric,
Dust Green
2,731 \$



London - Fabric,
Grey Brown
2,731 \$



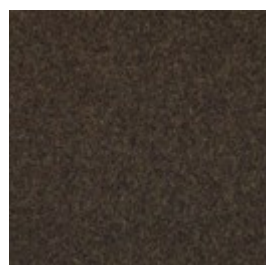
London - Fabric,
Light Beige
2,731 \$



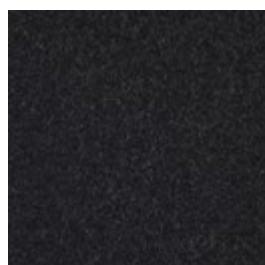
London - Fabric,
Light Grey
2,731 \$

QUAL - WOOL

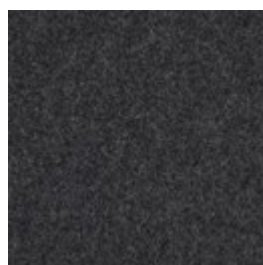
Qual is woven from 100% pure new wool – specially developed for Bolia. The soft structure makes it comfortable and user-friendly. The wool's natural content of lanolin makes the fabric easy to keep clean.



Qual - Wool, Army
Melange
2,731 \$



Qual - Wool, Dark
Grey Melange
2,731 \$

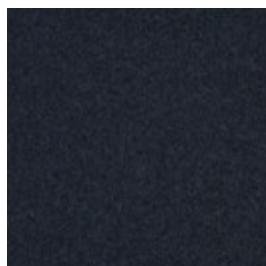


Qual - Wool, Grey
Melange
2,731 \$

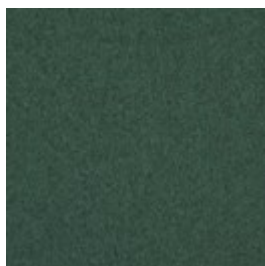


Qual - Wool, Light
Grey Melange
2,731 \$

Select material and colour



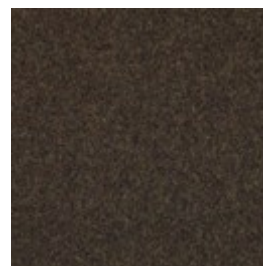
Qual - Wool, Navy
Melange
2,731 \$



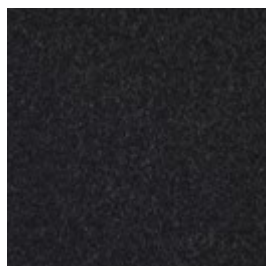
Qual - Wool, Sea
Green
2,731 \$



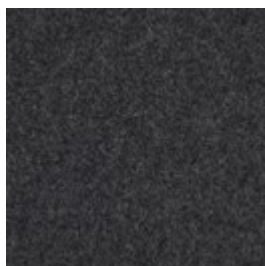
Qual - Wool, Stone
Grey
2,731 \$



Qual - Wool, Army
Melange
2,731 \$



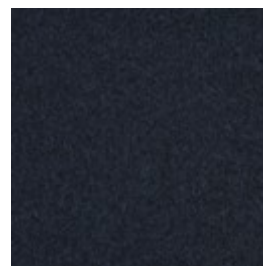
Qual - Wool, Dark
Grey Melange
2,731 \$



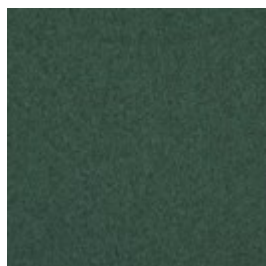
Qual - Wool, Grey
Melange
2,731 \$



Qual - Wool, Light
Grey Melange
2,731 \$



Qual - Wool, Navy
Melange
2,731 \$



Qual - Wool, Sea
Green
2,731 \$



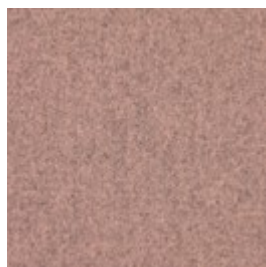
Qual - Wool, Stone
Grey
2,731 \$



Qual - Wool, Curry
Melange
2,731 \$



Qual - Wool, Mint
Melange
2,731 \$



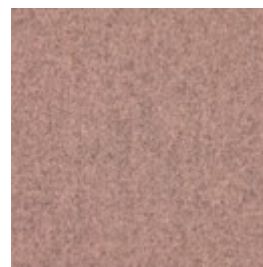
Qual - Wool, Rose
Melange
2,731 \$



Qual - Wool, Curry
Melange
2,731 \$



Qual - Wool, Mint
Melange
2,731 \$



Qual - Wool, Rose
Melange
2,731 \$

Select material and colour

MEMORY - FABRIC - Memory is an upholstery toned with three colours that give the fabric a totally unique character. A durable and hard-wearing fabric with a beautiful and elegant structure that not only adds an exclusive look to any piece of furniture, but is also soft and comfortable to sit in.



Memory - Fabric,
Antracit

2,731 \$



Memory - Fabric,
Blue

2,731 \$



Memory - Fabric,
Grey

2,731 \$



Memory
- Fabric,
Grey -
White

2,731 \$



Memory - Fabric,
Light Brown

2,731 \$



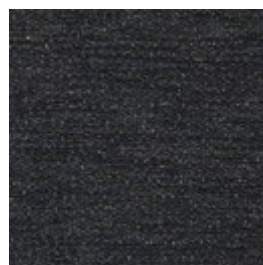
Memory - Fabric,
Light Grey

2,731 \$



Memory - Fabric,
Antracit

2,731 \$



Memory - Fabric,
Blue

2,731 \$



Memory - Fabric,
Grey

2,731 \$



Memory
- Fabric,
Grey -
White

2,731 \$



Memory - Fabric,
Light Brown

2,731 \$



Memory - Fabric,
Light Grey

2,731 \$

Select material and colour

OCEAN - FABRIC

Ocean is a special furniture fabric with unique qualities that can be seen in the dye, where even the smallest parts are dyed before the threads are spun. This is a completely unique quality to Ocean, making it a fabric with incredibly high light fastness. Ocean has a soft surface structure and is 100% free of PFC, and manufactured without the use of water in production, which gives Ocean a more sustainable origin. Ocean is also certified to OEKO-TEX standards, which ensures the quality and durability.



Ocean - Fabric,
Light Grey
2,731 \$



Ocean - Fabric,
Sand
2,731 \$



Ocean - Fabric,
Light Grey
2,731 \$



Ocean - Fabric,
Sand
2,731 \$



Ocean - Fabric,
Antracit
2,731 \$



Ocean - Fabric,
Dark Blue
2,731 \$



Ocean - Fabric,
Dark Grey
2,731 \$



Ocean - Fabric,
Grey
2,731 \$



Ocean - Fabric,
Antracit
2,731 \$



Ocean - Fabric,
Dark Blue
2,731 \$



Ocean - Fabric,
Dark Grey
2,731 \$



Ocean - Fabric,
Grey
2,731 \$

Select material and colour

STEP Step Melange features a vibrant and attractive interplay of colour with a luxurious melange effect.
MELANGE Step Melange is both OEKO-TEX certified and EU Ecolabelled, making it therefore a durable and
- FABRIC beautiful furniture fabric. With a Martindale count of 100,000, the fabric is also suitable for both private and public use.



Step Melange -
Fabric, Light Blue
Green
2,731 \$



Step Melange -
Fabric, Light Grey
2,731 \$



Step Melange -
Fabric, Grey Blue
2,731 \$



Step Melange -
Fabric, Grey
2,731 \$



Step Melange -
Fabric, Dark grey
2,731 \$



Step Melange -
Fabric, Beige
2,731 \$



Step Melange -
Fabric, Light Blue
Green
2,731 \$



Step Melange -
Fabric, Light Grey
2,731 \$



Step Melange -
Fabric, Grey Blue
2,731 \$



Step Melange -
Fabric, Grey
2,731 \$



Step Melange -
Fabric, Dark grey
2,731 \$



Step Melange -
Fabric, Beige
2,731 \$

Select material and colour

LINEA - VELVET

Taken from the Latin language, Linea means line, reflecting the beautiful and distinctive exterior of this fabric. A fabric inspired by the corduroy-feel, Linea is both elegant and playful. With an incredibly soft tactility and extremely durable quality, exemplified in a Martindale value of 100.000, this fabric offers something truly spectacular. Linea is certified OEKO-TEX certified guaranteeing no hazardous chemicals are used.



Linea - Velvet, Rosa

2,731 \$



Linea - Velvet, Light
Grey

2,731 \$



Linea - Velvet, Grey

2,731 \$



Linea - Velvet,
Green

2,731 \$



Linea - Velvet, Dark
Beige

2,731 \$

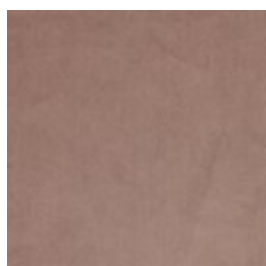


Linea - Velvet, Blue

2,731 \$

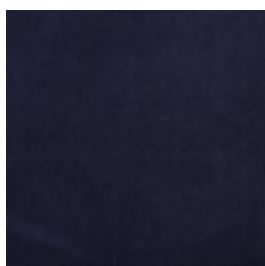
NOVEL - VELOUR

Novel is an elegant and soft velour with a luxurious '70s vibe. The soft fabric feels comfortable and brushes blissfully against your body. A sophisticated fabric that makes sure your furniture will get noticed.



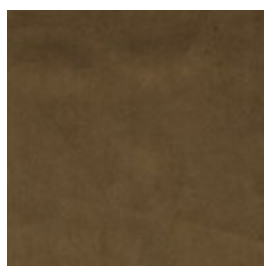
Novel - Velour,
Beige

3,043 \$



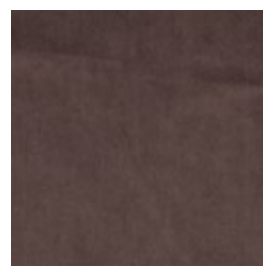
Novel - Velour, Blue

3,043 \$



Novel - Velour,
Green

3,043 \$



Novel - Velour, Grey
Brown

3,043 \$

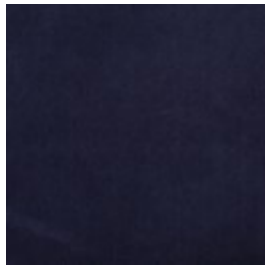
Select material and colour



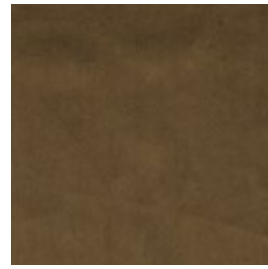
Novel - Velour,
Light Blue
3,043 \$



Novel - Velour,
Beige
3,043 \$



Novel - Velour, Blue
3,043 \$



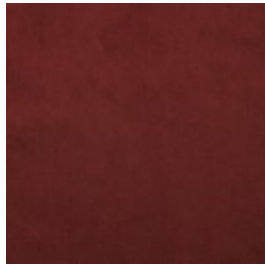
Novel - Velour,
Green
3,043 \$



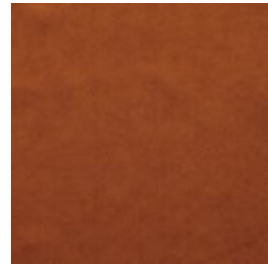
Novel - Velour, Grey
Brown
3,043 \$



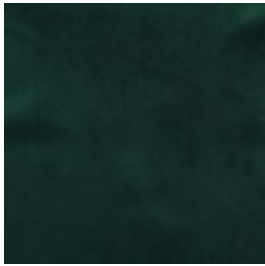
Novel - Velour,
Light Blue
3,043 \$



Novel - Velour,
Bordeaux
3,043 \$



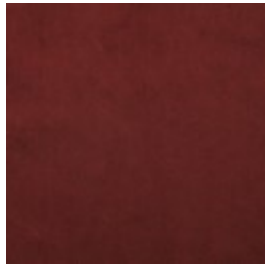
Novel - Velour,
Cognac
3,043 \$



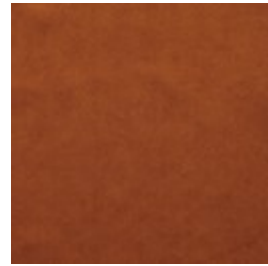
Novel - Velour, Dark
green
3,043 \$



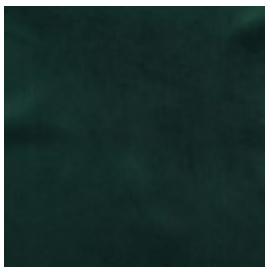
Novel - Velour,
Stone Blue
3,043 \$



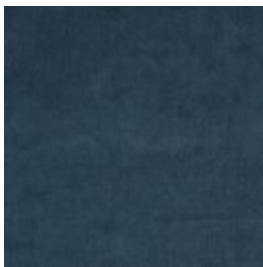
Novel - Velour,
Bordeaux
3,043 \$



Novel - Velour,
Cognac
3,043 \$



Novel - Velour, Dark
green
3,043 \$



Novel - Velour,
Stone Blue
3,043 \$



Novel - Velour,
Light Grey
3,043 \$



Novel - Velour,
Light Grey
3,043 \$

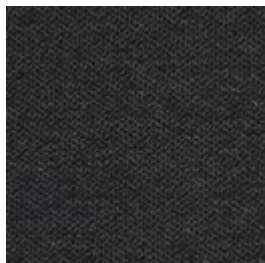
Select material and colour

ASCOT - FABRIC

Ascot is a flat woven upholstery, with a rough texture and a soft surface. By combining synthetic, durable fibres with natural ones, Ascot combines the best of both worlds. Ascot upholstery is certified to OEKO-TEX standards and produced in accordance with the highest standards.



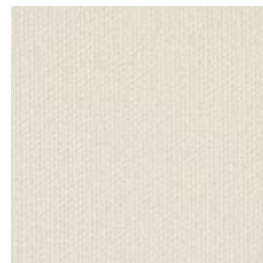
Ascot - Fabric,
Beige
3,043 \$



Ascot - Fabric,
Charcoal
3,043 \$



Ascot - Fabric, Grey
3,043 \$



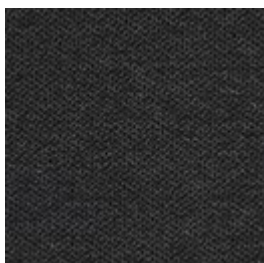
Ascot - Fabric,
Ivory
3,043 \$



Ascot - Fabric,
Light Grey
3,043 \$



Ascot - Fabric,
Beige
3,043 \$



Ascot - Fabric,
Charcoal
3,043 \$



Ascot - Fabric, Grey
3,043 \$



Ascot - Fabric,
Ivory
3,043 \$



Ascot - Fabric,
Light Grey
3,043 \$

Select material and colour

GAJA C2C - WOOL Gaja C2C is the first wool fabric with Cradle to Cradle Silver certification™. Cradle to Cradle is a certification where the designs are evaluated on the material's health, the recyclable properties of the material, the use of renewable energy, water management and social fairness on a larger scale. Gaja C2C is made of New Zealand wool and manufactured without the use of any hazardous chemicals. The fabric is also OEKO-TEX® certified and has been awarded the EU Ecolabel. Gaja C2C is our most sustainable furniture fabric, where every single choice has been made with consideration for the environment and our surroundings.



Gaja C2C - Wool,
Light Brown
3,043 \$



Gaja C2C - Wool,
Dark grey
3,043 \$



Gaja C2C - Wool,
Dark green
3,043 \$



Gaja C2C - Wool,
Dark brown
3,043 \$



Gaja C2C - Wool,
Dark blue green
3,043 \$



Gaja C2C - Wool,
Dark grey
3,043 \$

MONZA - FABRIC Monza is an OEKO-TEX certified fabric with a strong boucle tactility made from a mixture of natural and durable patterns like cotton and wool. A luxurious fabric with a strong and structured touch and expression stressed by the boucle texture where small nooses are combined to give that distinctive contour and feel. With Martindale of 80.000 and an excellent 7 on a scale from 2-8 in light fastness, Monza is sure to hold its form, colour and format for many years to come.



Monza - Fabric,
Grey
3,138 \$



Monza - Fabric,
Dark Grey
3,138 \$

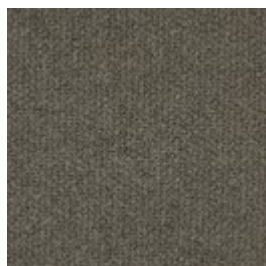


Monza - Fabric,
Dark Beige
3,138 \$



Monza - Fabric,
Beige
3,138 \$

Select material and colour



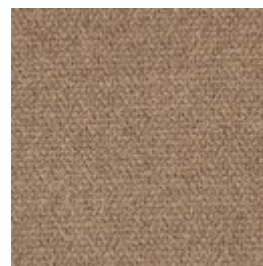
Monza - Fabric, Sea
Green
3,138 \$



Monza - Fabric,
Grey
3,138 \$



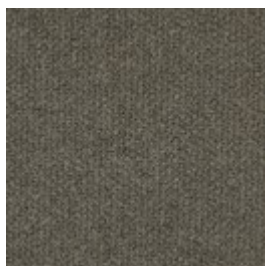
Monza - Fabric,
Dark Grey
3,138 \$



Monza - Fabric,
Dark Beige
3,138 \$



Monza - Fabric,
Beige
3,138 \$



Monza - Fabric, Sea
Green
3,138 \$

LAINÉ - WOOL

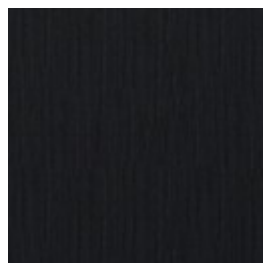
Laine is a very exclusive wool fabric consisting of 92% pure New Zealand wool and 8% polyamide. The elegant melange effect gives the fabric has a wonderfully vibrant look. Furthermore, it is Oeko-Tex certified and EU Eco-labelled.



Laine - Wool, Light
Blue
3,463 \$



Laine - Wool, Light
Brown
3,463 \$



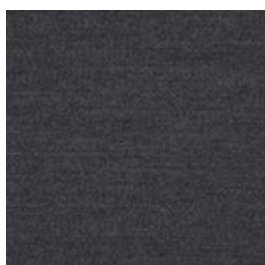
Laine - Wool,
Antracit
3,463 \$



Laine - Wool, Beige
3,463 \$



Laine - Wool, Dark
Blue
3,463 \$



Laine - Wool, Dark
Grey
3,463 \$



Laine - Wool, Grey
3,463 \$

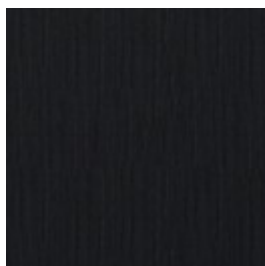


Laine - Wool, Light
Blue
3,463 \$

Select material and colour



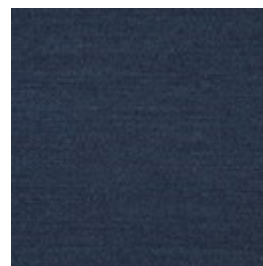
Laine - Wool, Light
Brown
3,463 \$



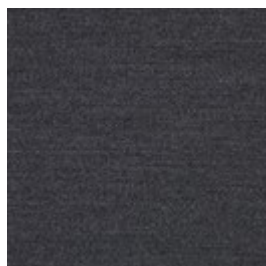
Laine - Wool,
Antracit
3,463 \$



Laine - Wool, Beige
3,463 \$



Laine - Wool, Dark
Blue
3,463 \$



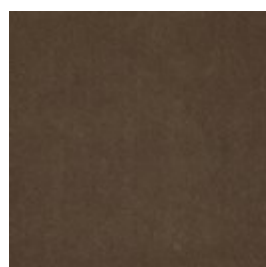
Laine - Wool, Dark
Grey
3,463 \$



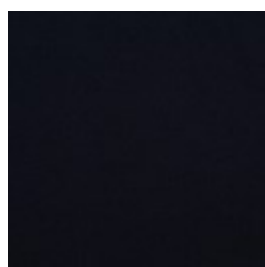
Laine - Wool, Grey
3,463 \$

RITZ - VELOUR

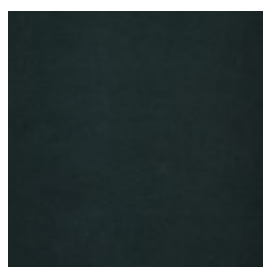
Ritz is a beautiful and velvety upholstery fabric. The velour fabric is exclusive in its appearance and its properties. Choose Ritz if you want a piece of furniture that stands out from the crowd.



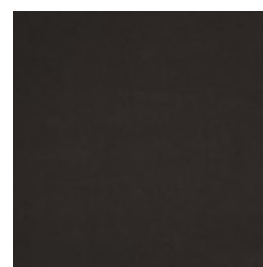
Ritz - Velour, Steel
Grey
3,463 \$



Ritz - Velour, Dark
Blue
3,463 \$



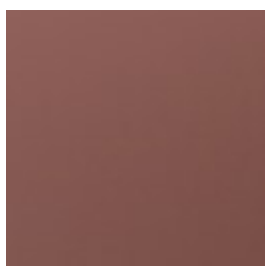
Ritz - Velour, Forest
Green
3,463 \$



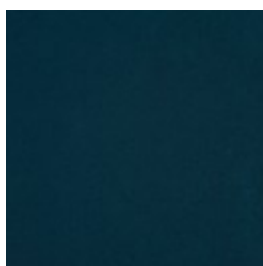
Ritz - Velour, Grey
3,463 \$



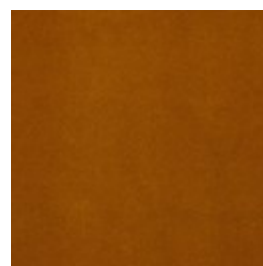
Ritz - Velour, Light
Grey
3,463 \$



Ritz - Velour, Light
Rosa
3,463 \$

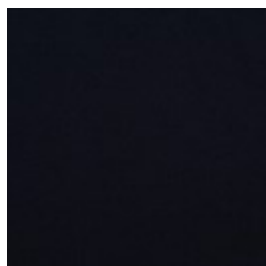


Ritz - Velour, Petrol
3,463 \$

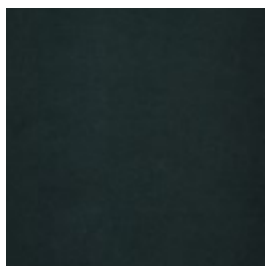


Ritz - Velour, Curry
3,463 \$

Select material and colour



Ritz - Velour, Dark Blue
3,463 \$



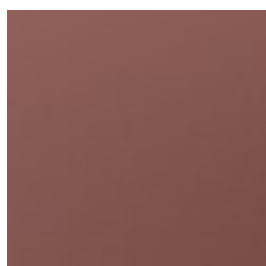
Ritz - Velour, Forest Green
3,463 \$



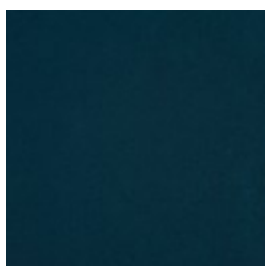
Ritz - Velour, Grey
3,463 \$



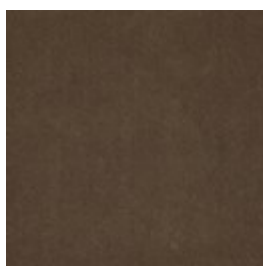
Ritz - Velour, Light Grey
3,463 \$



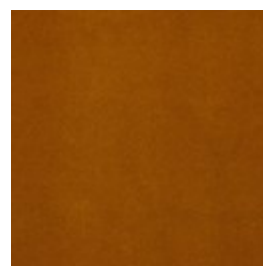
Ritz - Velour, Light Rosa
3,463 \$



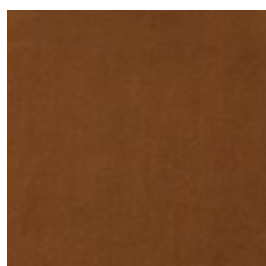
Ritz - Velour, Petrol
3,463 \$



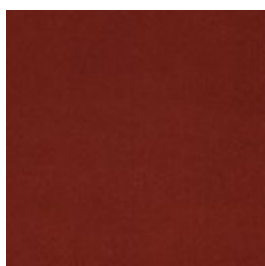
Ritz - Velour, Steel Grey
3,463 \$



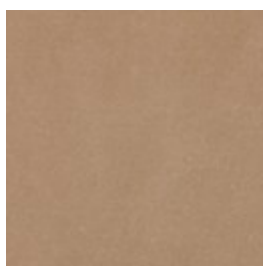
Ritz - Velour, Curry
3,463 \$



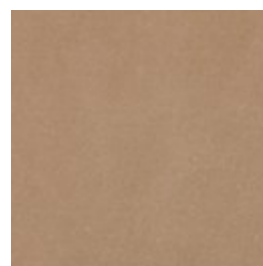
Ritz - Velour, Camel
3,463 \$



Ritz - Velour, Brick Red
3,463 \$



Ritz - Velour, Beige
3,463 \$



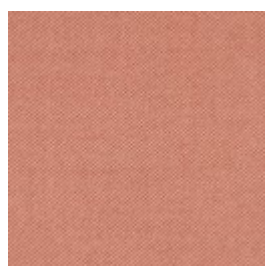
Ritz - Velour, Beige
3,463 \$

MIRA - WOOL

Mira is a 100% natural wool fabric with a melange effect that creates a dynamic interplay of colours. The firm structure is soft to the touch and the threads are fine with a close weave. Mira is a high quality wool fabric that is woven and inspected in Germany. Mira is also certified with the OEKO-TEX label, with an extremely high abrasion resistance.



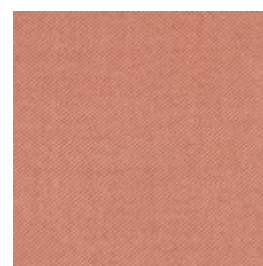
Mira - Wool, Stone Blue
3,463 \$



Mira - Wool, Terra
3,463 \$

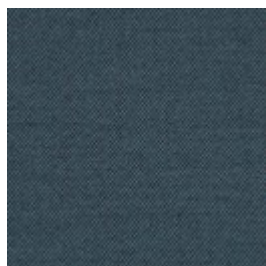


Mira - Wool, Stone Blue
3,463 \$



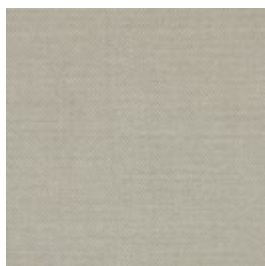
Mira - Wool, Terra
3,463 \$

Select material and colour



Mira - Wool, Blue

3,463 \$



Mira - Wool, Dust Green

3,463 \$



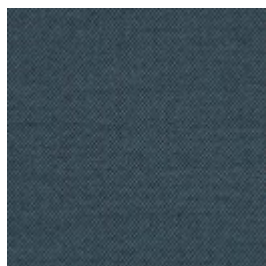
Mira - Wool, Grey

3,463 \$



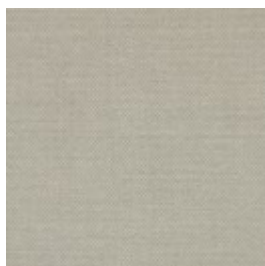
Mira - Wool, Ivory

3,463 \$



Mira - Wool, Blue

3,463 \$



Mira - Wool, Dust Green

3,463 \$



Mira - Wool, Grey

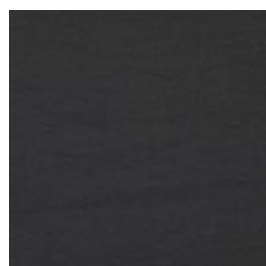
3,463 \$



Mira - Wool, Ivory

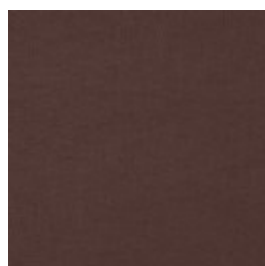
3,463 \$

QUATTRO TRACEABLE - LEATHER Quality leather from European cattle. Quattro traceable leather is tanned without the use of chrome and can always be traced back to the cattle's area of origin. The leather is lightly surface treated and dyed, which ensures the appearance and colour of the leather.



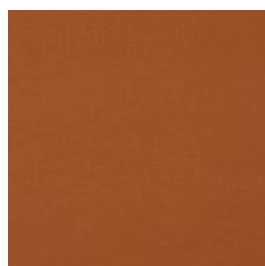
Quattro Traceable -
Leather, Black

3,602 \$



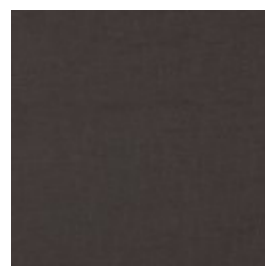
Quattro Traceable -
Leather, Brown

3,602 \$



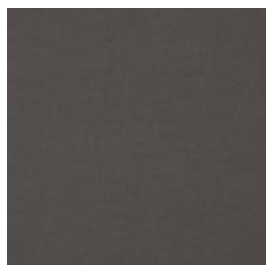
Quattro Traceable -
Leather, Cognac

3,602 \$



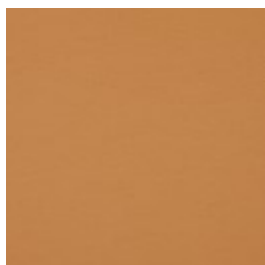
Quattro Traceable -
Leather, Dark
Brown

3,602 \$



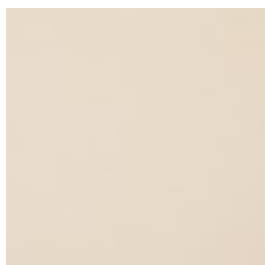
Quattro Traceable -
Leather, Grey

3,602 \$



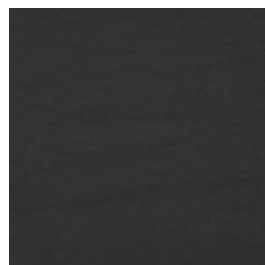
Quattro Traceable -
Leather, Nougat

3,602 \$



Quattro Traceable -
Leather, White

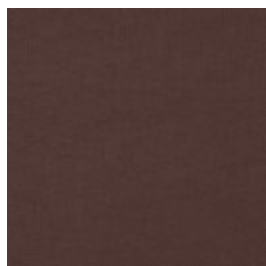
3,602 \$



Quattro Traceable -
Leather, Black

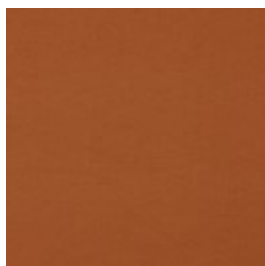
3,602 \$

Select material and colour



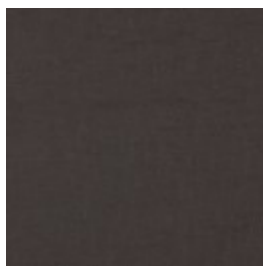
Quattro Traceable -
Leather, Brown

3,602 \$



Quattro Traceable -
Leather, Cognac

3,602 \$



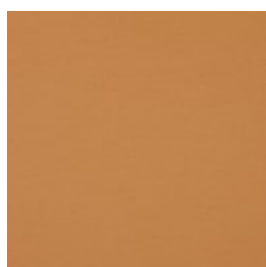
Quattro Traceable -
Leather, Dark
Brown

3,602 \$



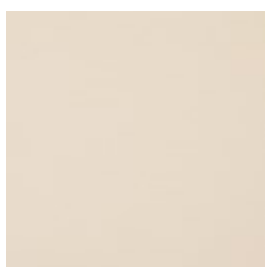
Quattro Traceable -
Leather, Grey

3,602 \$



Quattro Traceable -
Leather, Nougat

3,602 \$

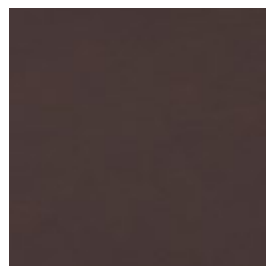


Quattro Traceable -
Leather, White

3,602 \$

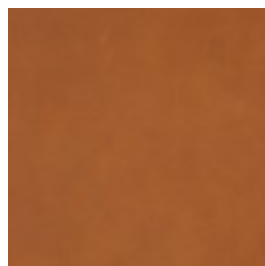
SYDNEY - LEATHER

Sydney is an exclusive traceable leather from Australia with an elegant and soft touch. The tactility is incredibly soft while still holding a timeless feel. A breathable aniline leather with great qualities and durable traits. The surface structure is soft yet with a mat feel and invites your fingers to explore. A high-quality leather that due to its natural characters is light sensitive and can change colour if placed in direct sunlight, but cared for correctly, will become even more beautiful over the years.



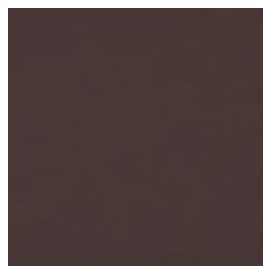
Sydney - Leather,
Mocca

3,602 \$



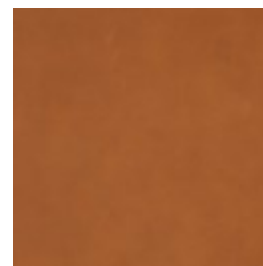
Sydney - Leather,
Cognac

3,602 \$



Sydney - Leather,
Mocca

3,602 \$



Sydney - Leather,
Cognac

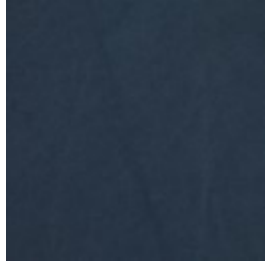
3,602 \$

Select material and colour

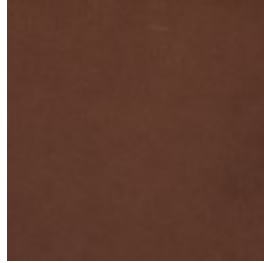
AUSTIN - LEATHER An exclusive, solid leather that's 100% traceable, with a soft and smooth surface, produced from the best European materials. The leather is breathable, which, alongside the other qualities, makes Austin bliss to sit in. And lie in. Austin is not surface treated and will therefore develop a beautiful patina over time.



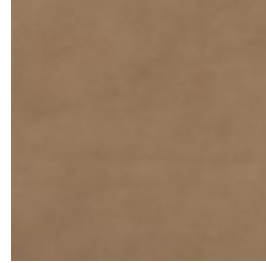
Austin - Leather,
Black
3,669 \$



Austin - Leather,
Blue
3,669 \$



Austin - Leather,
Brown
3,669 \$



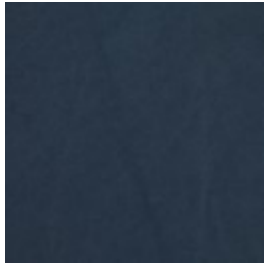
Austin - Leather,
Grey
3,669 \$



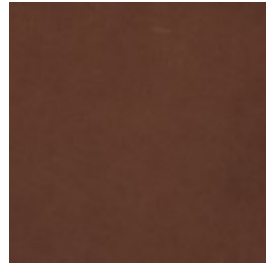
Austin - Leather,
Nature
3,669 \$



Austin - Leather,
Black
3,669 \$



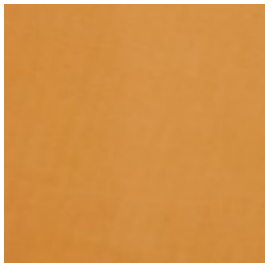
Austin - Leather,
Blue
3,669 \$



Austin - Leather,
Brown
3,669 \$



Austin - Leather,
Grey
3,669 \$



Austin - Leather,
Nature
3,669 \$

Select seat



Oiled walnut
2,290 \$



White oiled oak
2,290 \$

We are here to help

Customer Care: Mon-Fri 09-21, Sat, Sun and holidays
10-16 (GMT+1)

Email: Customerservice@bolia.com

Phone: +45 88960225