

## Fuuga 2 seater sofa



## Fuuga

Fuuga is designed by Busetti Garuti Redaelli. The back is rounded and meets the armrests in a sloped ending, which gives Fuuga its distinctive appearance. Fuuga is made from sustainable wood, and the traditional wooden craftsmanship in the base is emphasised by hand-crafted details and authentic materials that complete the design experience. Fuuga is available in several furniture coverings and colours and can be tailor-made specially for you.



**Busetti Garuti Redaelli**

**3,684 \$**

### Specification

**Cover**

Baize, Sand

**Depth**

80 cm

**Composition**

100% Polyester

**Height**

86 cm

**Base**

Oiled oak

**Seat height**

45 cm

**Width**

160 cm

**Seat depth**

55 cm

# Select material and colour

## **BAIZE - FABRIC**

Baize is an extra soft upholstery fabric that provides superior comfort. The material has a beautiful, classic look that suits most furniture.



Baize - Fabric, Sand

3,684 \$



Baize - Fabric, Antracit

3,684 \$



Baize - Fabric, Dark Grey

3,684 \$



Baize - Fabric, Dust Blue

3,684 \$



Baize - Fabric, Dust Green

3,684 \$



Baize - Fabric, Grey

3,684 \$



Baize - Fabric, Light Grey

3,684 \$

## **NANTES - FABRIC**

Nantes is woven from 100% polyester and is an absolute bestseller. This stylish fabric featuring a visible structure is both stain-resistant and durable.



Nantes - Fabric, Multi Grey

3,684 \$



Nantes - Fabric, Petrol

3,684 \$



Nantes - Fabric, Sea Green

3,684 \$



Nantes - Fabric, Stone Blue

3,684 \$



Nantes - Fabric, Dark green

3,684 \$



Nantes - Fabric, Dust Blue

3,684 \$



Nantes - Fabric, Grey

3,684 \$



Nantes - Fabric, Light Beige

3,684 \$

## Select material and colour



Nantes - Fabric,  
Light Blue  
3,684 \$



Nantes - Fabric,  
Light Grey  
3,684 \$



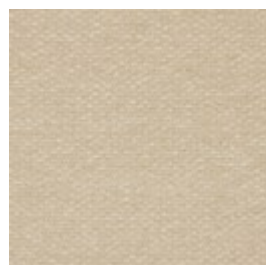
Nantes - Fabric,  
Antracit  
3,684 \$



Nantes - Fabric,  
Blue Grey  
3,684 \$

### **SIRA - FABRIC**

Sira is a soft and comforting fabric made from 100% recycled cotton making it a natural, beautiful and sustainable choice. No new raw materials have been used, and the production is solely sponsored by solar or wind energy. Sira has a bold structure, yet incredibly soft feel. The heavy texture is complemented by the inviting touch that makes Sira a beautiful fabric - and even one of our most sustainable fabrics available.



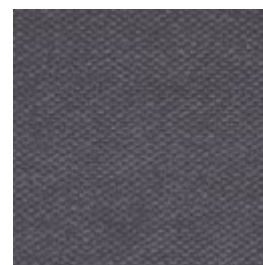
Sira - Fabric, Beige  
3,684 \$



Sira - Fabric, Blue  
3,684 \$



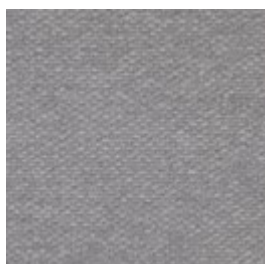
Sira - Fabric, Dark  
Beige  
3,684 \$



Sira - Fabric, Grey  
3,684 \$



Sira - Fabric, Grey  
Brown  
3,684 \$



Sira - Fabric, Light  
Grey  
3,684 \$

# Select material and colour

## SOIL - FABRIC

Soil is a flat-woven soft fabric made from 60% recycled bottles and is STANDARD 100 by OEKO-TEX®-certified. A strong and durable fabric with a sustainable outset.



Soil - Fabric, Dark green  
3,684 \$



Soil - Fabric, Green  
3,684 \$



Soil - Fabric, Light Grey  
3,684 \$



Soil - Fabric, Sand  
3,684 \$



Soil - Fabric, Dark Brown  
3,684 \$



Soil - Fabric, Dark Grey  
3,684 \$



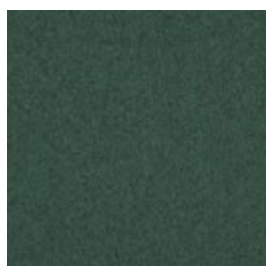
Soil - Fabric, Stone Blue  
3,684 \$



Soil - Fabric, Rose Melange  
3,684 \$

## QUAL - WOOL

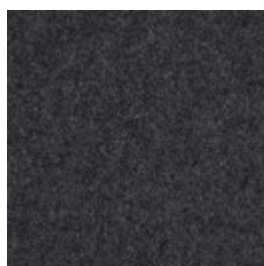
Qual is woven from 100% pure new wool – specially developed for Bolia. The soft structure makes it comfortable and user-friendly. The wool's natural content of lanolin makes the fabric easy to keep clean.



Qual - Wool, Sea Green  
4,168 \$



Qual - Wool, Stone Grey  
4,168 \$



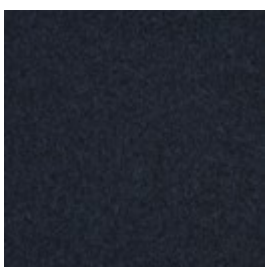
Qual - Wool, Grey Melange  
4,168 \$



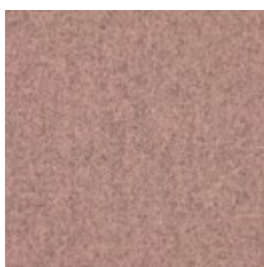
Qual - Wool, Light Grey Melange  
4,168 \$



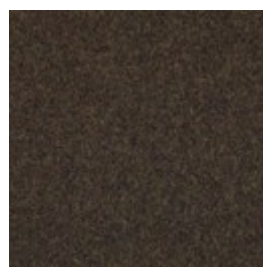
Qual - Wool, Mint Melange  
4,168 \$



Qual - Wool, Navy Melange  
4,168 \$



Qual - Wool, Rose Melange  
4,168 \$

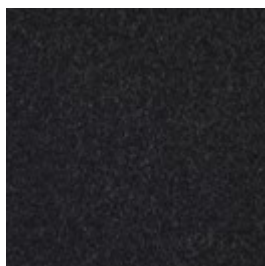


Qual - Wool, Army Melange  
4,168 \$

# Select material and colour



Qual - Wool, Curry  
Melange  
4,168 \$



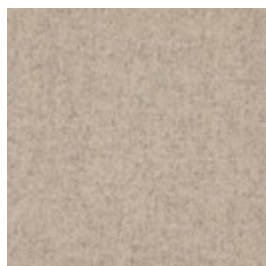
Qual - Wool, Dark  
Grey Melange  
4,168 \$



Qual - Wool, Sand  
4,168 \$



Qual - Wool, Blue  
Melange  
4,168 \$



Qual - Wool, Dark  
Beige  
4,168 \$

**MEMORY - FABRIC** - Memory is an upholstery toned with three colours that give the fabric a totally unique character. A durable and hard-wearing fabric with a beautiful and elegant structure that not only adds an exclusive look to any piece of furniture, but is also soft and comfortable to sit in.



Memory - Fabric,  
Grey

4,168 \$



Memory  
- Fabric,  
Grey -  
White

4,168 \$



Memory - Fabric,  
Light Brown

4,168 \$



Memory - Fabric,  
Light Grey

4,168 \$



Memory - Fabric,  
Antracit  
4,168 \$



Memory - Fabric,  
Blue  
4,168 \$

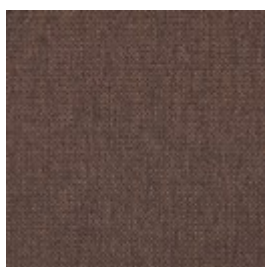


# Select material and colour

**LONDON - FABRIC** - London is a strong upholstery fabric and comes in a variety of colors. It is a beautifully woven fabric with a pure and elegant look. London is 100% polyester.



London - Fabric,  
Blue  
4,168 \$



London - Fabric,  
Brown  
4,168 \$



London - Fabric,  
Burgundy  
4,168 \$



London - Fabric,  
Dark Grey  
4,168 \$



London - Fabric,  
Petrol  
4,168 \$



London - Fabric,  
Raw Amber  
4,168 \$



London - Fabric,  
Rosa  
4,168 \$



London - Fabric,  
Sea Green  
4,168 \$



London - Fabric,  
Dust Green  
4,168 \$



London - Fabric,  
Grey Brown  
4,168 \$



London - Fabric,  
Light Beige  
4,168 \$



London - Fabric,  
Light Grey  
4,168 \$



London - Fabric,  
Mint  
4,168 \$



London - Fabric,  
Multi Grey  
4,168 \$



London - Fabric,  
Dust Blue  
4,168 \$



London - Fabric,  
Light Blue  
4,168 \$

# Select material and colour

**STEP MELANGE - FABRIC** Step Melange features a vibrant and attractive interplay of colour with a luxurious melange effect. Step Melange is both OEKO-TEX certified and EU Ecolabelled, making it therefore a durable and beautiful furniture fabric. With a Martindale count of 100,000, the fabric is also suitable for both private and public use.



Step Melange -  
Fabric, Grey Blue

4,168 \$



Step Melange -  
Fabric, Light Grey

4,168 \$



Step Melange -  
Fabric, Light Blue  
Green

4,168 \$



Step Melange -  
Fabric, Beige

4,168 \$



Step Melange -  
Fabric, Dark grey

4,168 \$



Step Melange -  
Fabric, Grey

4,168 \$

**LINEA - VELVET** Taken from the Latin language, Linea means line, reflecting the beautiful and distinctive exterior of this fabric. A fabric inspired by the corduroy-feel, Linea is both elegant and playful. With an incredibly soft tactility and extremely durable quality, exemplified in a Martindale value of 100.000, this fabric offers something truly spectacular. Linea is certified OEKO-TEX certified guaranteeing no hazardous chemicals are used.



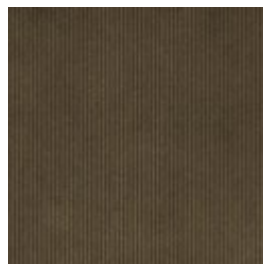
Linea - Velvet, Blue

4,168 \$



Linea - Velvet, Dark  
Beige

4,168 \$



Linea - Velvet,  
Green

4,168 \$



Linea - Velvet, Grey

4,168 \$

# Select material and colour



Linea - Velvet, Light Grey  
4,168 \$

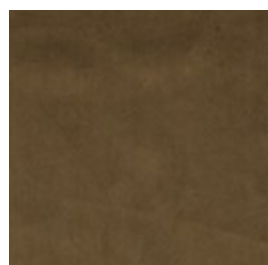


Linea - Velvet, Rosa  
4,168 \$

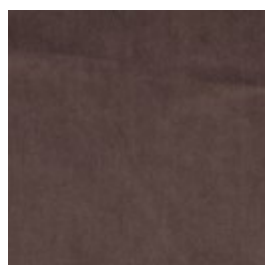


Linea - Velvet, Beige  
4,168 \$

**NOVEL - VELOUR** Novel is an elegant and soft velour with a luxurious '70s vibe. The soft fabric feels comfortable and brushes blissfully against your body. A sophisticated fabric that makes sure your furniture will get noticed.



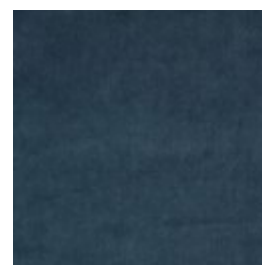
Novel - Velour, Green  
4,632 \$



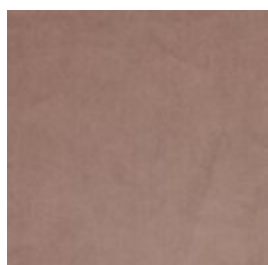
Novel - Velour, Grey Brown  
4,632 \$



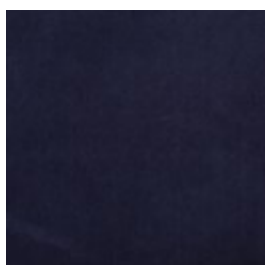
Novel - Velour, Light Blue  
4,632 \$



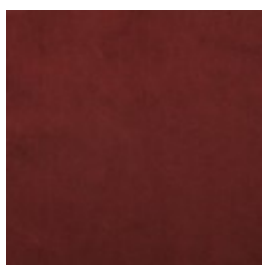
Novel - Velour, Stone Blue  
4,632 \$



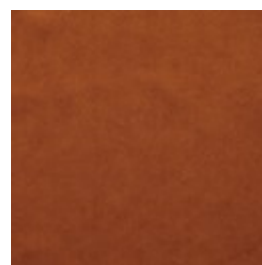
Novel - Velour, Beige  
4,632 \$



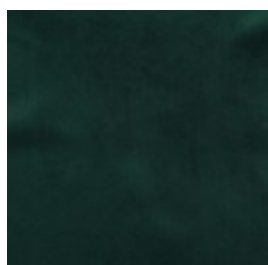
Novel - Velour, Blue  
4,632 \$



Novel - Velour, Bordeaux  
4,632 \$



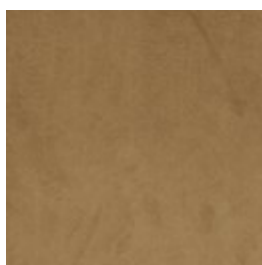
Novel - Velour, Cognac  
4,632 \$



Novel - Velour, Dark green  
4,632 \$



Novel - Velour, Light Grey  
4,632 \$



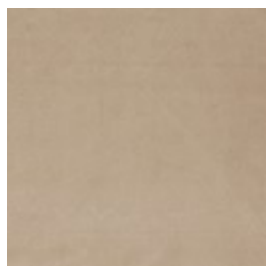
Novel - Velour, Camel  
4,632 \$



Novel - Velour, Dust green  
4,632 \$



# Select material and colour

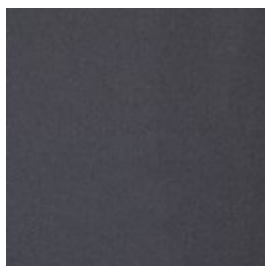


Novel - Velour,  
Light Beige  
4,632 \$

**GAJA C2C - WOOL** Gaja C2C is the first wool fabric with Cradle to Cradle Silver certification™. Cradle to Cradle is a certification where the designs are evaluated on the material's health, the recyclable properties of the material, the use of renewable energy, water management and social fairness on a larger scale. Gaja C2C is made of New Zealand wool and manufactured without the use of any hazardous chemicals. The fabric is also OEKO-TEX® certified and has been awarded the EU Ecolabel. Gaja C2C is our most sustainable furniture fabric, where every single choice has been made with consideration for the environment and our surroundings.



Gaja C2C - Wool,  
Dark green  
4,632 \$



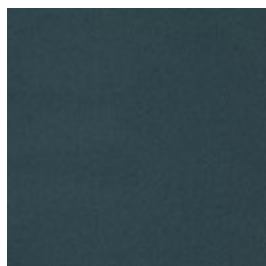
Gaja C2C - Wool,  
Dark grey  
4,632 \$



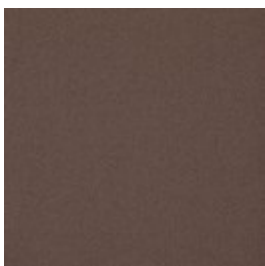
Gaja C2C - Wool,  
Light Brown  
4,632 \$



Gaja C2C - Wool,  
Light Grey  
4,632 \$



Gaja C2C - Wool,  
Dark blue green  
4,632 \$



Gaja C2C - Wool,  
Dark brown  
4,632 \$

# Select material and colour

## LAINÉ - WOOL

Laine is a very exclusive wool fabric consisting of 92% pure New Zealand wool and 8% polyamide. The elegant melange effect gives the fabric a wonderfully vibrant look. Furthermore, it is Oeko-Tex certified and EU Eco-labelled.



Laine - Wool, Grey

5,600 \$



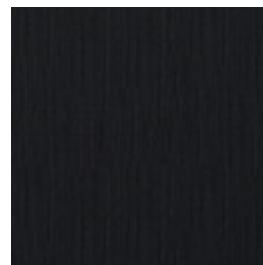
Laine - Wool, Light Blue

5,600 \$



Laine - Wool, Light Brown

5,600 \$



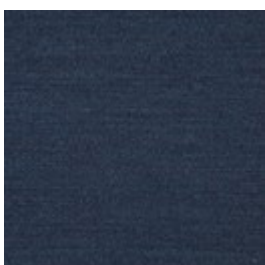
Laine - Wool, Antracit

5,600 \$



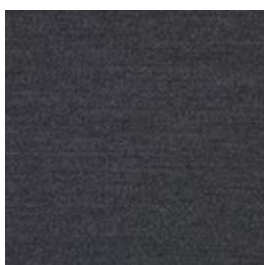
Laine - Wool, Beige

5,600 \$



Laine - Wool, Dark Blue

5,600 \$

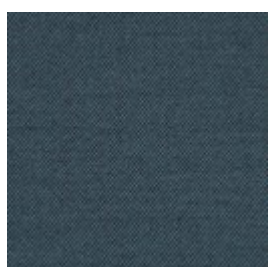


Laine - Wool, Dark Grey

5,600 \$

## MIRA - WOOL

Mira is a 100% natural wool fabric with a melange effect that creates a dynamic interplay of colours. The firm structure is soft to the touch and the threads are fine with a close weave. Mira is a high quality wool fabric that is woven and inspected in Germany. Mira is also certified with the OEKO-TEX label, with an extremely high abrasion resistance.



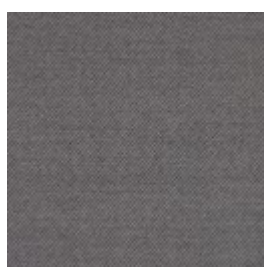
Mira - Wool, Blue

5,600 \$



Mira - Wool, Dust Green

5,600 \$



Mira - Wool, Grey

5,600 \$



Mira - Wool, Ivory

5,600 \$

# Select material and colour



Mira - Wool, Stone  
Blue  
5,600 \$



Mira - Wool, Terra  
5,600 \$

**MONZA - FABRIC** Monza is an OEKO-TEX certified fabric with a strong boucle tactility made from a mixture of natural and durable patterns like cotton and wool. A luxurious fabric with a strong and structured touch and expression stressed by the boucle texture where small nooses are combined to give that distinctive contour and feel. With Martindale of 80.000 and an excellent 7 on a scale from 2-8 in light fastness, Monza is sure to hold its form, colour and format for many years to come.



Monza - Fabric,  
Beige  
5,600 \$



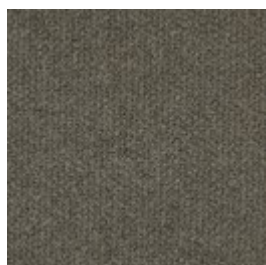
Monza - Fabric,  
Dark Beige  
5,600 \$



Monza - Fabric,  
Dark Grey  
5,600 \$



Monza - Fabric,  
Grey  
5,600 \$



Monza - Fabric, Sea  
Green  
5,600 \$

## Select legs



Black stained oak  
3,684 \$



Oiled oak  
3,684 \$



White pigmented  
oiled oak  
3,684 \$

## **We are here to help**

Customer Care: Mon-Fri 09-21, Sat, Sun and holidays  
10-16 (GMT+1)

Email: [Customerservice@bolia.com](mailto:Customerservice@bolia.com)

Phone: +45 88960225