

## Sepia 2½ seater sofa



# Sepia

Sepia is a series of sofas and poufs designed by the Danish design duo Glismand & Rüdiger with a richly detailed exterior and a soft, inviting profile. The deep seat depth gives the sofa a lounge-like character, which is emphasised by the armrests, seat cushions and back cushions, where the filling is placed and optimised to create the softest possible experience. The seat cushions are also reversible, which makes cleaning easier and prolongs the lifetime, and are precisely positioned on a slightly sloped base, which keeps the cushions securely in place. A thoroughly classic yet modern sofa series, with a harmonious balance of comfort, elegance and quality.

**4,085 \$**

**Glismand & Rüdiger**

### Specification

**Cover**

Fawn, Light Grey

**Width**

207 cm

**Composition**

100% Polyester

**Depth**

103.5 cm

**Filling**

Cold foam

**Height**

73 cm

**Base**

White pigmented oiled oak

**Seat height**

40 cm

**Base Height**

6 cm

**Seat depth**

68 cm

# Select material and colour

## **FAWN - FABRIC**

Fawn has a Scandinavian, natural look. The fabric is wonderfully soft and features a subtle play of colour. Fawn adds a minimalistic and simple look to your home.



Fawn - Fabric,  
Antracit  
4,085 \$



Fawn - Fabric,  
Green  
4,085 \$



Fawn - Fabric, Grey  
4,085 \$



Fawn - Fabric, Light  
Grey  
4,085 \$

## **BAIZE - FABRIC**

Baize is an extra soft upholstery fabric that provides superior comfort. The material has a beautiful, classic look that suits most furniture.



Baize - Fabric, Dust  
Blue  
5,480 \$



Baize - Fabric,  
Antracit  
5,480 \$



Baize - Fabric, Dark  
Grey  
5,480 \$



Baize - Fabric, Dust  
Green  
5,480 \$



Baize - Fabric, Grey  
5,480 \$



Baize - Fabric, Light  
Grey  
5,480 \$



Baize - Fabric, Sand  
5,480 \$

# Select material and colour

**NANTES - FABRIC** Nantes is woven from 100% polyester and is an absolute bestseller. This stylish fabric featuring a visible structure is both stain-resistant and durable.



Nantes - Fabric,  
Multi Grey  
5,480 \$



Nantes - Fabric,  
Petrol  
5,480 \$



Nantes - Fabric,  
Sea Green  
5,480 \$



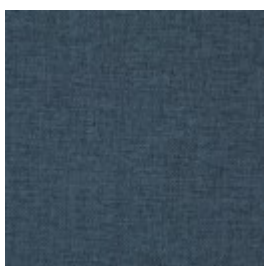
Nantes - Fabric,  
Antracit  
5,480 \$



Nantes - Fabric,  
Blue Grey  
5,480 \$



Nantes - Fabric,  
Dark green  
5,480 \$



Nantes - Fabric,  
Dust Blue  
5,480 \$



Nantes - Fabric,  
Grey  
5,480 \$



Nantes - Fabric,  
Light Grey  
5,480 \$



Nantes - Fabric,  
Stone Blue  
5,480 \$

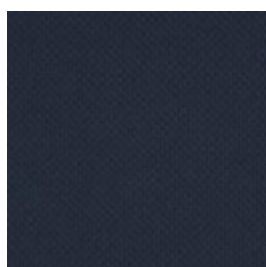


Nantes - Fabric,  
Light Beige  
5,480 \$



Nantes - Fabric,  
Light Blue  
5,480 \$

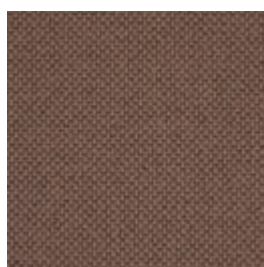
**BERGO - FABRIC** Bergo does something none of our other materials can do. It's made from recycled polyester made of plastic bottles. This ensures that no new raw materials are used and production focuses on minimising energy consumption and the use of biodegradable chemicals. Bergo is 100% free of heavy metals and is also certified according to the EU Ecolabel and Oeko-tex standards.



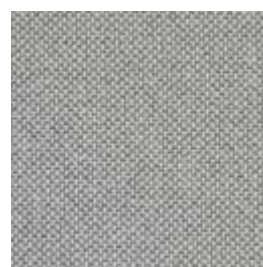
Bergo - Fabric,  
Dark Blue  
5,480 \$



Bergo - Fabric,  
Grey  
5,480 \$



Bergo - Fabric,  
Light Brown  
5,480 \$



Bergo - Fabric,  
Light Grey  
5,480 \$

# Select material and colour



Bergo - Fabric,  
Petrol  
5,480 \$



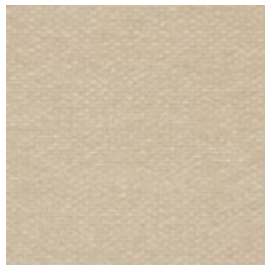
Bergo - Fabric, Raw  
Amber  
5,480 \$



Bergo - Fabric,  
Beige  
5,480 \$

## **SIRA - FABRIC**

Sira is a soft and comforting fabric made from 100% recycled cotton making it a natural, beautiful and sustainable choice. No new raw materials have been used, and the production is solely sponsored by solar or wind energy. Sira has a bold structure, yet incredibly soft feel. The heavy texture is complemented by the inviting touch that makes Sira a beautiful fabric - and even one of our most sustainable fabrics available.



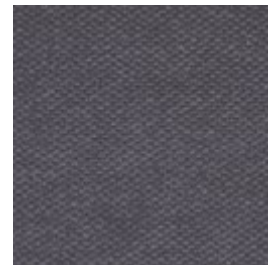
Sira - Fabric, Beige  
5,480 \$



Sira - Fabric, Blue  
5,480 \$



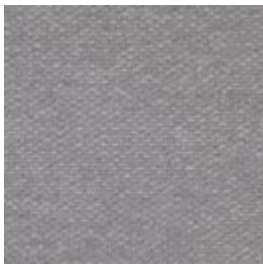
Sira - Fabric, Dark  
Beige  
5,480 \$



Sira - Fabric, Grey  
5,480 \$



Sira - Fabric, Grey  
Brown  
5,480 \$



Sira - Fabric, Light  
Grey  
5,480 \$

# Select material and colour

## SOIL - FABRIC

Soil is a flat-woven soft fabric made from 60% recycled bottles and is STANDARD 100 by OEKO-TEX®-certified. A strong and durable fabric with a sustainable outset.



Soil - Fabric, Dark green  
5,480 \$



Soil - Fabric, Rose Melange  
5,480 \$



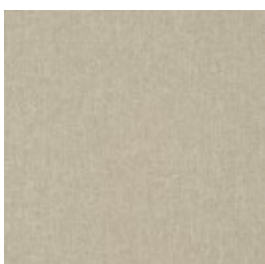
Soil - Fabric, Stone Blue  
5,480 \$



Soil - Fabric, Dark Grey  
5,480 \$



Soil - Fabric, Dark Brown  
5,480 \$



Soil - Fabric, Sand  
5,480 \$



Soil - Fabric, Light Grey  
5,480 \$



Soil - Fabric, Green  
5,480 \$

## MEMORY - FABRIC

Memory is an upholstery toned with three colours that give the fabric a totally unique character. A durable and hard-wearing fabric with a beautiful and elegant structure that not only adds an exclusive look to any piece of furniture, but is also soft and comfortable to sit in.



Memory - Fabric, Light Brown



Memory - Fabric, Light Grey



Memory - Fabric, Antracit

Memory - Fabric, Grey - White  
5,875 \$

5,875 \$

5,875 \$

5,875 \$



# Select material and colour



Memory - Fabric,  
Blue  
5,875 \$



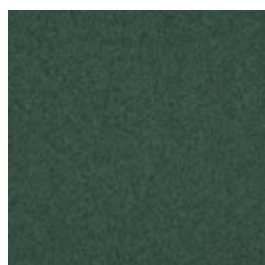
Memory - Fabric,  
Grey  
5,875 \$

## **QUAL - WOOL**

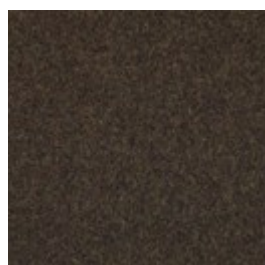
Qual is woven from 100% pure new wool – specially developed for Bolia. The soft structure makes it comfortable and user-friendly. The wool's natural content of lanolin makes the fabric easy to keep clean.



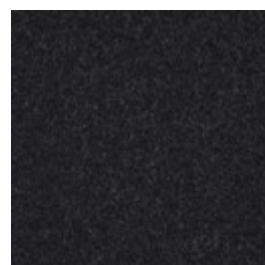
Qual - Wool, Stone  
Grey  
5,875 \$



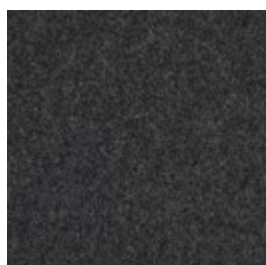
Qual - Wool, Sea  
Green  
5,875 \$



Qual - Wool, Army  
Melange  
5,875 \$



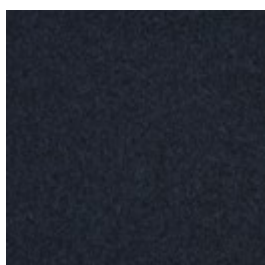
Qual - Wool, Dark  
Grey Melange  
5,875 \$



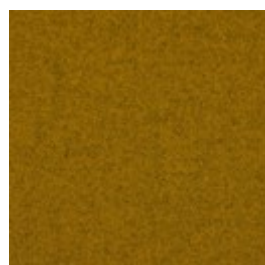
Qual - Wool, Grey  
Melange  
5,875 \$



Qual - Wool, Light  
Grey Melange  
5,875 \$



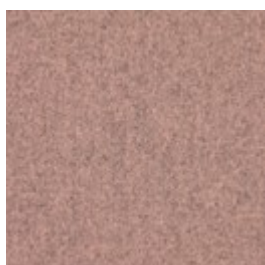
Qual - Wool, Navy  
Melange  
5,875 \$



Qual - Wool, Curry  
Melange  
5,875 \$



Qual - Wool, Mint  
Melange  
5,875 \$



Qual - Wool, Rose  
Melange  
5,875 \$

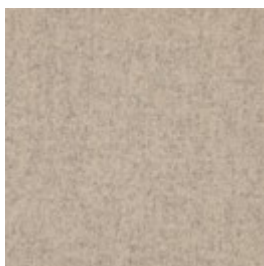


Qual - Wool, Sand  
5,875 \$



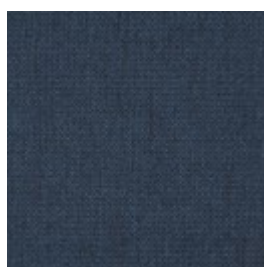
Qual - Wool, Blue  
Melange  
5,875 \$

# Select material and colour



Qual - Wool, Dark  
Beige  
5,875 \$

**LONDON - FABRIC** - London is a strong upholstery fabric and comes in a variety of colors. It is a beautifully woven fabric with a pure and elegant look. London is 100% polyester.



London - Fabric,  
Blue  
5,875 \$



London - Fabric,  
Brown  
5,875 \$



London - Fabric,  
Burgundy  
5,875 \$



London - Fabric,  
Dark Grey  
5,875 \$



London - Fabric,  
Dust Green  
5,875 \$



London - Fabric,  
Grey Brown  
5,875 \$



London - Fabric,  
Light Beige  
5,875 \$



London - Fabric,  
Light Grey  
5,875 \$



London - Fabric,  
Mint  
5,875 \$



London - Fabric,  
Multi Grey  
5,875 \$



London - Fabric,  
Rosa  
5,875 \$

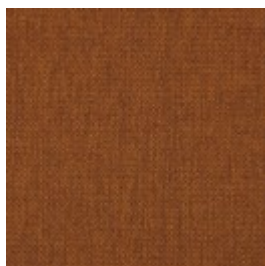


London - Fabric,  
Sea Green  
5,875 \$

# Select material and colour



London - Fabric,  
Petrol  
5,875 \$



London - Fabric,  
Raw Amber  
5,875 \$



London - Fabric,  
Dust Blue  
5,875 \$



London - Fabric,  
Light Blue  
5,875 \$

## **PURE - FABRIC**

Pure is a 100% pure natural product made of 40% linen and 60% cotton. The vintage-look material means that every metre is unique and each piece of furniture can vary in colour and appearance. However, this merely enriches the look and gives the fabric its own unique character.



Pure - Fabric, Mint  
5,875 \$



Pure - Fabric, Sand  
5,875 \$



Pure - Fabric, Grey  
5,875 \$



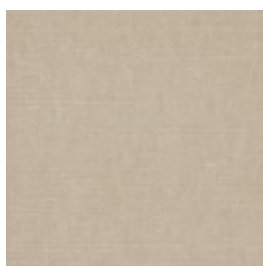
Pure - Fabric, Light  
Brown  
5,875 \$



Pure - Fabric, Light  
Grey  
5,875 \$



Pure - Fabric, Dark  
Grey  
5,875 \$



Pure - Fabric, Beige  
5,875 \$



# Select material and colour

## **AXUS - FABRIC**

Axus is an environmentally-friendly choice. A gorgeous Italian upholstery fabric, with 32% made from recycled cotton and where the weaving mill uses solar power for a large proportion of its production to reduce CO2 emissions. Specially chosen to give you a beautiful and environmentally-friendly piece of furniture.



Axus - Fabric,  
Burned Red  
5,875 \$



Axus - Fabric, Dark  
Blue  
5,875 \$



Axus - Fabric, Dark  
grey  
5,875 \$



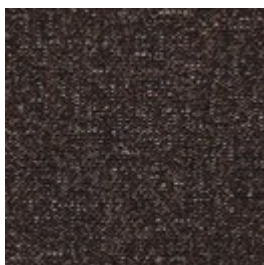
Axus - Fabric,  
Green Grey  
5,875 \$



Axus - Fabric, Grey  
Yellow  
5,875 \$



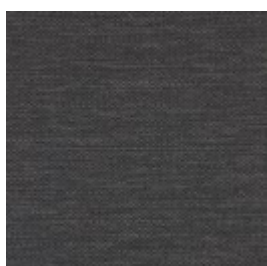
Axus - Fabric, Multi  
Grey  
5,875 \$



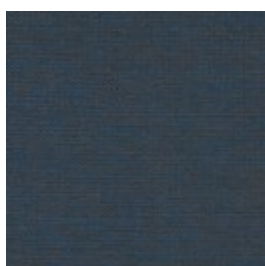
Axus - Fabric,  
Brown  
5,875 \$

## **OCEAN - FABRIC**

Ocean is a special furniture fabric with unique qualities that can be seen in the dye, where even the smallest parts are dyed before the threads are spun. This is a completely unique quality to Ocean, making it a fabric with incredibly high light fastness. Ocean has a soft surface structure and is 100% free of PFC, and manufactured without the use of water in production, which gives Ocean a more sustainable origin. Ocean is also certified to OEKO-TEX standards, which ensures the quality and durability.



Ocean - Fabric,  
Antracit  
5,875 \$



Ocean - Fabric,  
Dark Blue  
5,875 \$



Ocean - Fabric,  
Dark Grey  
5,875 \$



Ocean - Fabric,  
Grey  
5,875 \$

# Select material and colour



Ocean - Fabric,  
Light Grey  
5,875 \$



Ocean - Fabric,  
Sand  
5,875 \$

**STEP MELANGE - FABRIC** Step Melange features a vibrant and attractive interplay of colour with a luxurious melange effect. Step Melange is both OEKO-TEX certified and EU Ecolabelled, making it therefore a durable and beautiful furniture fabric. With a Martindale count of 100,000, the fabric is also suitable for both private and public use.



Step Melange -  
Fabric, Beige  
5,875 \$



Step Melange -  
Fabric, Dark grey  
5,875 \$



Step Melange -  
Fabric, Grey  
5,875 \$



Step Melange -  
Fabric, Grey Blue  
5,875 \$



Step Melange -  
Fabric, Light Grey  
5,875 \$



Step Melange -  
Fabric, Light Blue  
Green  
5,875 \$

# Select material and colour

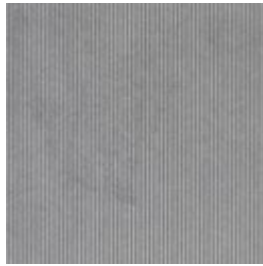
## LINEA - VELVET

Taken from the Latin language, Linea means line, reflecting the beautiful and distinctive exterior of this fabric. A fabric inspired by the corduroy-feel, Linea is both elegant and playful. With an incredibly soft tactility and extremely durable quality, exemplified in a Martindale value of 100.000, this fabric offers something truly spectacular. Linea is certified OEKO-TEX certified guaranteeing no hazardous chemicals are used.



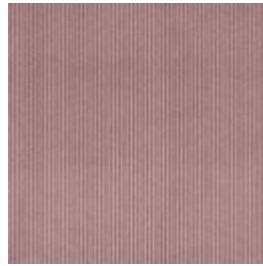
Linea - Velvet, Grey

5,875 \$



Linea - Velvet, Light  
Grey

5,875 \$



Linea - Velvet, Rosa

5,875 \$



Linea - Velvet,  
Beige

5,875 \$



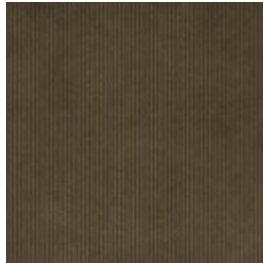
Linea - Velvet, Blue

5,875 \$



Linea - Velvet, Dark  
Beige

5,875 \$

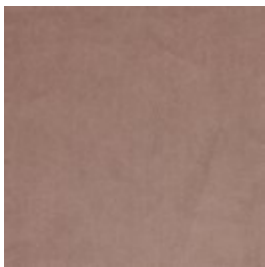


Linea - Velvet,  
Green

5,875 \$

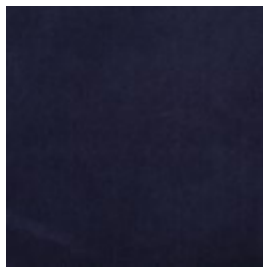
## NOVEL - VELOUR

Novel is an elegant and soft velour with a luxurious '70s vibe. The soft fabric feels comfortable and brushes blissfully against your body. A sophisticated fabric that makes sure your furniture will get noticed.



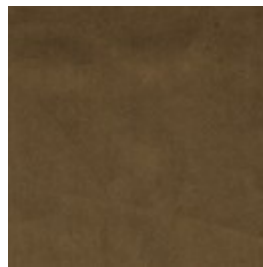
Novel - Velour,  
Beige

6,314 \$



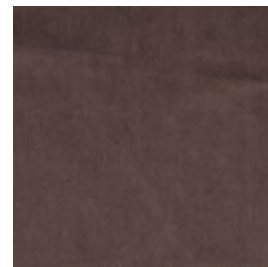
Novel - Velour, Blue

6,314 \$



Novel - Velour,  
Green

6,314 \$



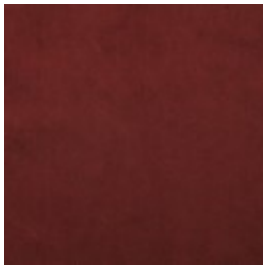
Novel - Velour, Grey  
Brown

6,314 \$

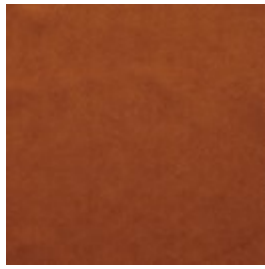
# Select material and colour



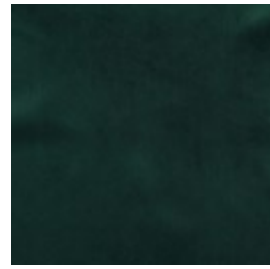
Novel - Velour,  
Light Blue  
6,314 \$



Novel - Velour,  
Bordeaux  
6,314 \$



Novel - Velour,  
Cognac  
6,314 \$



Novel - Velour, Dark  
green  
6,314 \$



Novel - Velour,  
Stone Blue  
6,314 \$



Novel - Velour,  
Light Grey  
6,314 \$



Novel - Velour,  
Camel  
6,314 \$



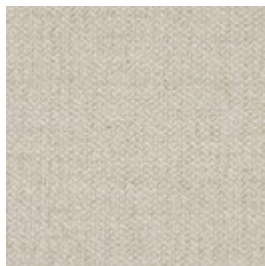
Novel - Velour, Dust  
green  
6,314 \$



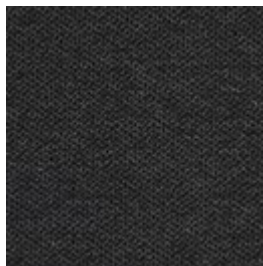
Novel - Velour,  
Light Beige  
6,314 \$

## **ASCOT - FABRIC**

Ascot is a flat woven upholstery, with a rough texture and a soft surface. By combining synthetic, durable fibres with natural ones, Ascot combines the best of both worlds. Ascot upholstery is certified to OEKO-TEX standards and produced in accordance with the highest standards.



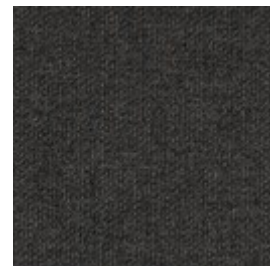
Ascot - Fabric,  
Beige  
6,314 \$



Ascot - Fabric,  
Charcoal  
6,314 \$

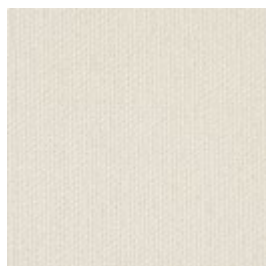


Ascot - Fabric, Grey  
6,314 \$



Ascot - Fabric, Grey  
Brown  
6,314 \$

# Select material and colour



Ascot - Fabric,  
Ivory  
6,314 \$

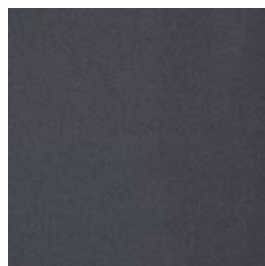


Ascot - Fabric,  
Light Grey  
6,314 \$

**GAJA C2C - WOOL** Gaja C2C is the first wool fabric with Cradle to Cradle Silver certification™. Cradle to Cradle is a certification where the designs are evaluated on the material's health, the recyclable properties of the material, the use of renewable energy, water management and social fairness on a larger scale. Gaja C2C is made of New Zealand wool and manufactured without the use of any hazardous chemicals. The fabric is also OEKO-TEX® certified and has been awarded the EU Ecolabel. Gaja C2C is our most sustainable furniture fabric, where every single choice has been made with consideration for the environment and our surroundings.



Gaja C2C - Wool,  
Dark green  
6,314 \$



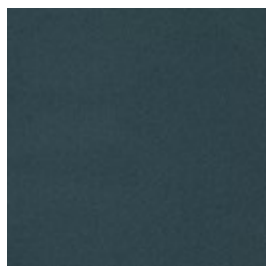
Gaja C2C - Wool,  
Dark grey  
6,314 \$



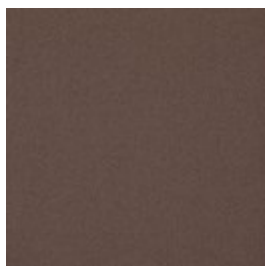
Gaja C2C - Wool,  
Light Brown  
6,314 \$



Gaja C2C - Wool,  
Light Grey  
6,314 \$



Gaja C2C - Wool,  
Dark blue green  
6,314 \$



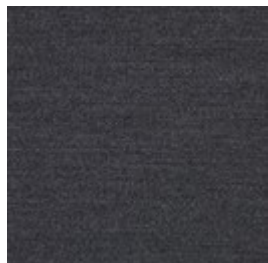
Gaja C2C - Wool,  
Dark brown  
6,314 \$



# Select material and colour

## LAINÉ - WOOL

Laine is a very exclusive wool fabric consisting of 92% pure New Zealand wool and 8% polyamide. The elegant melange effect gives the fabric has a wonderfully vibrant look. Furthermore, it is Oeko-Tex certified and EU Eco-labelled.



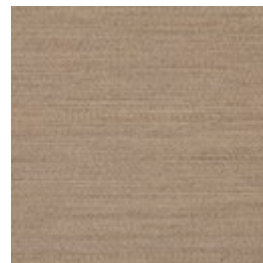
Laine - Wool, Dark Grey  
7,057 \$



Laine - Wool, Grey  
7,057 \$



Laine - Wool, Light Blue  
7,057 \$



Laine - Wool, Light Brown  
7,057 \$



Laine - Wool, Antracit  
7,057 \$



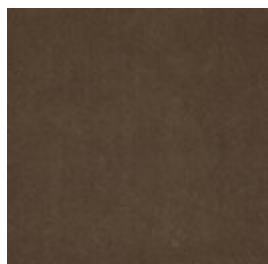
Laine - Wool, Beige  
7,057 \$



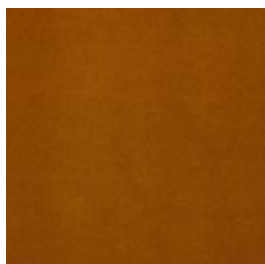
Laine - Wool, Dark Blue  
7,057 \$

## RITZ - VELOUR

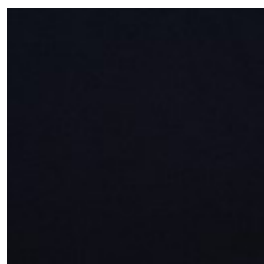
Ritz is a beautiful and velvety upholstery fabric. The velour fabric is exclusive in its appearance and its properties. Choose Ritz if you want a piece of furniture that stands out from the crowd.



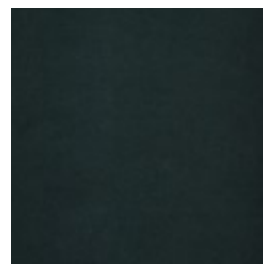
Ritz - Velour, Steel Grey  
7,057 \$



Ritz - Velour, Curry  
7,057 \$



Ritz - Velour, Dark Blue  
7,057 \$



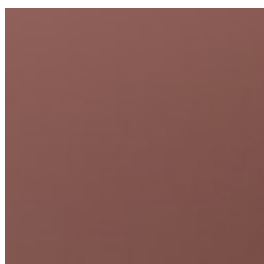
Ritz - Velour, Forest Green  
7,057 \$



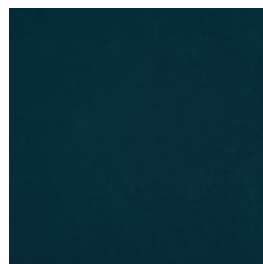
Ritz - Velour, Grey  
7,057 \$



Ritz - Velour, Light Grey  
7,057 \$

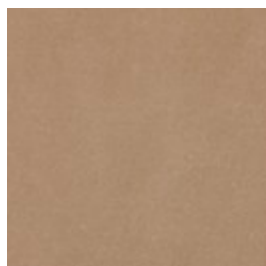


Ritz - Velour, Light Rosa  
7,057 \$



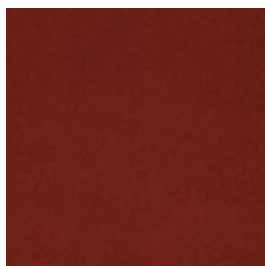
Ritz - Velour, Petrol  
7,057 \$

# Select material and colour



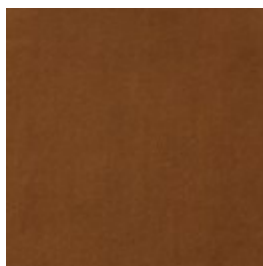
Ritz - Velour, Beige

7,057 \$



Ritz - Velour, Brick  
Red

7,057 \$

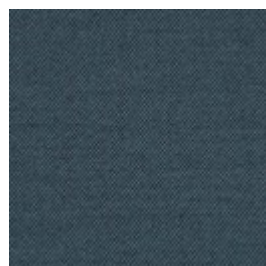


Ritz - Velour, Camel

7,057 \$

## **MIRA - WOOL**

Mira is a 100% natural wool fabric with a melange effect that creates a dynamic interplay of colours. The firm structure is soft to the touch and the threads are fine with a close weave. Mira is a high quality wool fabric that is woven and inspected in Germany. Mira is also certified with the OEKO-TEX label, with an extremely high abrasion resistance.



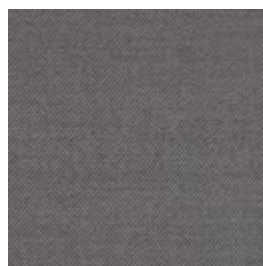
Mira - Wool, Blue

7,057 \$



Mira - Wool, Dust  
Green

7,057 \$



Mira - Wool, Grey

7,057 \$



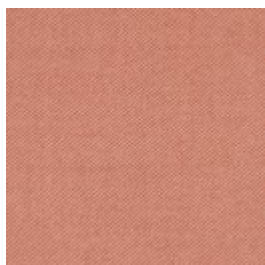
Mira - Wool, Ivory

7,057 \$



Mira - Wool, Stone  
Blue

7,057 \$



Mira - Wool, Terra

7,057 \$

# Select material and colour

**MONZA - FABRIC** Monza is an OEKO-TEX certified fabric with a strong boucle tactility made from a mixture of natural and durable patterns like cotton and wool. A luxurious fabric with a strong and structured touch and expression stressed by the boucle texture where small nooses are combined to give that distinctive contour and feel. With Martindale of 80.000 and an excellent 7 on a scale from 2-8 in light fastness, Monza is sure to hold its form, colour and format for many years to come.



Monza - Fabric,  
Beige  
7,057 \$



Monza - Fabric,  
Dark Beige  
7,057 \$



Monza - Fabric,  
Dark Grey  
7,057 \$

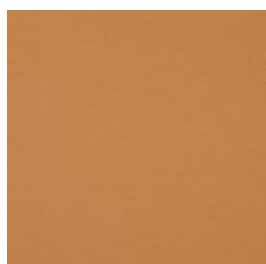


Monza - Fabric,  
Grey  
7,057 \$

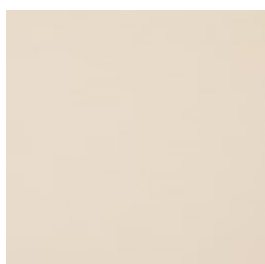


Monza - Fabric, Sea  
Green  
7,057 \$

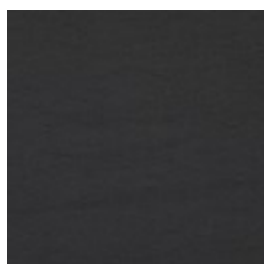
**QUATTRO TRACEABLE - LEATHER** Quality leather from European cattle. Quattro traceable leather is tanned without the use of chrome and can always be traced back to the cattle's area of origin. The leather is lightly surface treated and dyed, which ensures the appearance and colour of the leather.



Quattro Traceable -  
Leather, Nougat  
7,340 \$



Quattro Traceable -  
Leather, White  
7,340 \$

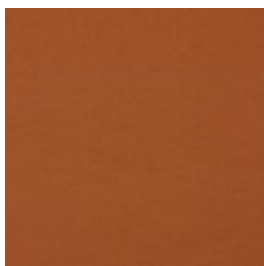


Quattro Traceable -  
Leather, Black  
7,340 \$



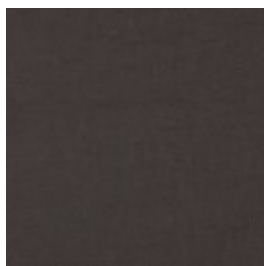
Quattro Traceable -  
Leather, Brown  
7,340 \$

## Select material and colour



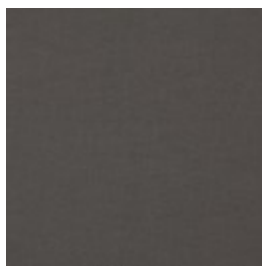
Quattro Traceable -  
Leather, Cognac

7,340 \$



Quattro Traceable -  
Leather, Dark  
Brown

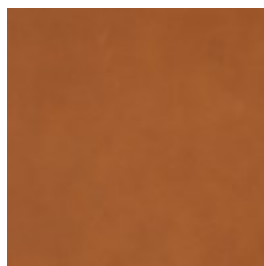
7,340 \$



Quattro Traceable -  
Leather, Grey

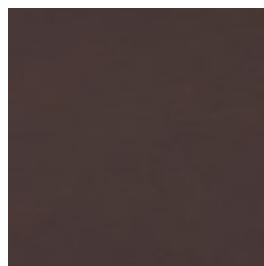
7,340 \$

**SYDNEY - LEATHER** Sydney is an exclusive traceable leather from Australia with an elegant and soft touch. The tactility is incredibly soft while still holding a timeless feel. A breathable aniline leather with great qualities and durable traits. The surface structure is soft yet with a mat feel and invites your fingers to explore. A high-quality leather that due to its natural characters is light sensitive and can change colour if placed in direct sunlight, but cared for correctly, will become even more beautiful over the years.



Sydney - Leather,  
Cognac

7,340 \$

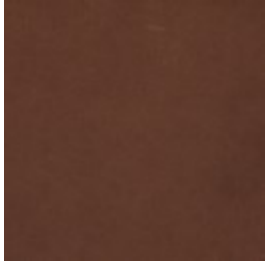


Sydney - Leather,  
Mocca

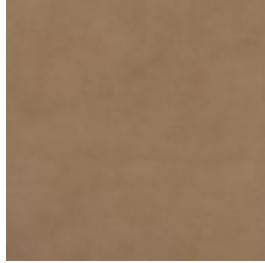
7,340 \$

## Select material and colour

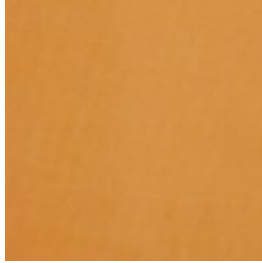
**AUSTIN - LEATHER** An exclusive, solid leather that's 100% traceable, with a soft and smooth surface, produced from the best European materials. The leather is breathable, which, alongside the other qualities, makes Austin bliss to sit in. And lie in. Austin is not surface treated and will therefore develop a beautiful patina over time.



Austin - Leather,  
Brown  
7,894 \$



Austin - Leather,  
Grey  
7,894 \$



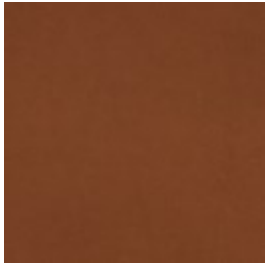
Austin - Leather,  
Nature  
7,894 \$



Austin - Leather,  
Black  
7,894 \$



Austin - Leather,  
Blue  
7,894 \$



Austin - Leather,  
Cognac  
7,894 \$

### Select socket



Oiled oak  
4,085 \$



White pigmented  
oiled oak  
4,085 \$

**We are here to help**

Customer Care: Mon-Fri 09-21, Sat, Sun and holidays  
10-16 (GMT+1)

Email: [Customerservice@bolia.com](mailto:Customerservice@bolia.com)

Phone: +45 88960225