

Pira Sofa Bed 2,5 seater



Pira

Pira is an elegant, almost sculptural series of sofa beds and matching poufs designed by the German designer, Joa Herrenknecht. Created with the idea to design a functional sofa bed with an aesthetic profile looking and feeling nothing like the ordinary sofa bed. Instead functions are cleverly hid, but still instinctively intuitive, like the hidden storage compartment in poufs and chaise lounge modules, and the level of comfort exceeds any expectations. The entire series is FSC-certified, and the sofa bed has a built-in fold-out mechanism of the highest quality that is skilfully disguise, but reveals the longest, biggest and softest mattress allowing you to sink in a unwind most comfortably. A beautiful design with thought-out details, timeless, clear lines and a contemporary touch.



Joa Herrenknecht

7,852 \$

Specification

Cover

Fawn, Light Grey

Height

81 cm

Composition

100% Polyester

Seat height

46 cm

Base

Black lacquered steel

Seat depth

64 cm

Width

176 cm

Armrest height

70 cm

Depth

102 cm

Mattress measurements

143 x 208 x 12 cm

Tests and certificates

TSCA Title VI compliant, FSC™ C165134, FSC® C165134

Select material and colour

FAWN - FABRIC

Fawn has a Scandinavian, natural look. The fabric is wonderfully soft and features a subtle play of colour. Fawn adds a minimalistic and simple look to your home. Instead, its printed colour technique gives Fawn its distinctive look, which is beautifully complemented by a genuine quality highlighted by its STANDARD 100 by OEKO-TEX® certification, which ensures that no dangerous chemicals are used in production.



Fawn - Fabric,
Antracit
7,852 \$



Fawn - Fabric,
Green
7,852 \$



Fawn - Fabric, Grey
7,852 \$



Fawn - Fabric, Light
Grey
7,852 \$

BAIZE - FABRIC

Baize is an extra soft upholstery fabric that provides superior comfort. The material has a beautiful, classic look that suits most furniture. Baize is also certified according to STANDARD 100 by OEKO-TEX®, which ensures that no dangerous chemicals or heavy metals are used in its production.



Baize - Fabric, Dust
Blue
8,188 \$



Baize - Fabric, Grey
8,188 \$



Baize - Fabric, Light
Grey
8,188 \$



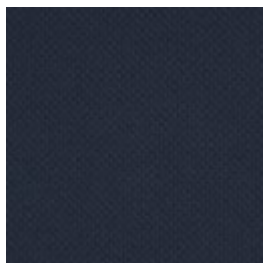
Baize - Fabric, Sand
8,188 \$

BERGO - FABRIC

Bergo does something none of our other materials can do. It's made from recycled polyester made of plastic bottles. This ensures that no new raw materials are used and production focuses on minimising energy consumption and the use of biodegradable chemicals. Likewise, Bergo is free from heavy metals, has been awarded the EU Ecolabel and is STANDARD 100 by OEKO-TEX® certified.



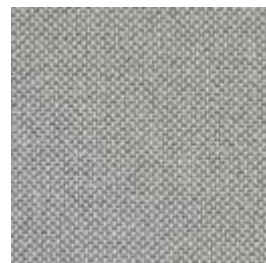
Bergo - Fabric,
Beige
8,188 \$



Bergo - Fabric,
Dark Blue
8,188 \$



Bergo - Fabric,
Grey
8,188 \$



Bergo - Fabric,
Light Grey
8,188 \$

Select material and colour



Bergo - Fabric, Raw
Amber
8,188 \$

NANTES - FABRIC Nantes is woven from 100% polyester and is an absolute bestseller. This stylish fabric featuring a visible structure is both stain-resistant and durable. Nantes is a timeless upholstery fabric that is STANDARD 100 by OEKO-TEX® certified and made to last.



Nantes - Fabric,
Antracit
8,188 \$



Nantes - Fabric,
Blue Grey
8,188 \$



Nantes - Fabric,
Dust Blue
8,188 \$



Nantes - Fabric,
Light Beige
8,188 \$



Nantes - Fabric,
Light Grey
8,188 \$



Nantes - Fabric,
Multi Grey
8,188 \$



Nantes - Fabric,
Petrol
8,188 \$



Nantes - Fabric,
Sea Green
8,188 \$

Select material and colour

SIRA - FABRIC

Sira is a soft and comforting fabric made from 100% recycled cotton making it a natural, beautiful and sustainable choice. No new raw materials have been used, and the production is solely sponsored by solar or wind energy. Sira has a bold structure, yet incredibly soft feel. The heavy texture is complemented by the inviting touch that makes Sira a beautiful fabric – and even one of our most sustainable fabrics available.



Sira - Fabric, Beige

8,188 \$



Sira - Fabric, Blue

8,188 \$



Sira - Fabric, Dark Beige

8,188 \$



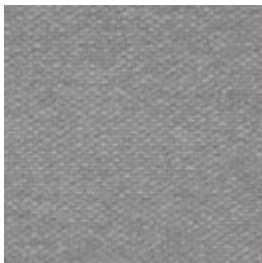
Sira - Fabric, Grey

8,188 \$



Sira - Fabric, Grey Brown

8,188 \$



Sira - Fabric, Light Grey

8,188 \$

SOIL - FABRIC

Soil is a flat-woven soft fabric made from 60% recycled bottles and is STANDARD 100 by OEKO-TEX®-certified. A strong and durable fabric with a sustainable outset.



Soil - Fabric, Dark green

8,188 \$



Soil - Fabric, Green

8,188 \$



Soil - Fabric, Light Grey

8,188 \$



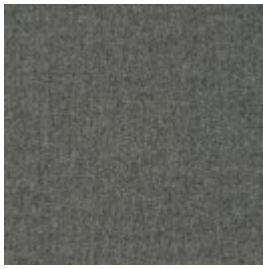
Soil - Fabric, Sand

8,188 \$

Select material and colour



Soil - Fabric, Dark
Brown
8,188 \$



Soil - Fabric, Dark
Grey
8,188 \$



Soil - Fabric, Stone
Blue
8,188 \$

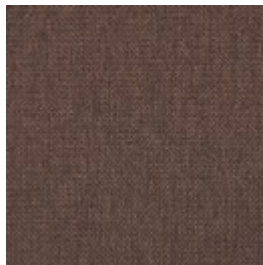


Soil - Fabric, Rose
Melange
8,188 \$

LONDON - FABRIC - London is a strong upholstery fabric and comes in a variety of colors. It is a beautifully woven fabric with a pure and elegant look. London is 100% polyester. London is also manufactured without the use of dangerous chemicals and is STANDARD 100 by OEKO-TEX® certified.



London - Fabric,
Blue
8,524 \$



London - Fabric,
Brown
8,524 \$



London - Fabric,
Dark Grey
8,524 \$



London - Fabric,
Dust Blue
8,524 \$



London - Fabric,
Dust Green
8,524 \$



London - Fabric,
Grey Brown
8,524 \$



London - Fabric,
Light Beige
8,524 \$



London - Fabric,
Light Grey
8,524 \$



London - Fabric,
Multi Grey
8,524 \$



London - Fabric,
Sea Green
8,524 \$

Select material and colour

MEMORY - FABRIC - Memory is an upholstery toned with three colours that give the fabric a totally unique character. A durable and hard-wearing fabric with a beautiful and elegant structure that not only adds an exclusive look to any piece of furniture, but is also soft and comfortable to sit in. Memory is also STANDARD 100 by OEKO-TEX® certified.



Memory - Fabric,
Blue
8,524 \$



Memory - Fabric,
Antracit
8,524 \$



Memory - Fabric,
Grey
8,524 \$



Memory - Fabric,
Grey - White
8,524 \$



Memory - Fabric,
Light Brown
8,524 \$



Memory - Fabric,
Light Grey
8,524 \$

OCEAN - FABRIC - Ocean is a special furniture fabric with unique qualities that can be seen in the dye, where even the smallest parts are dyed before the threads are spun. This is a completely unique quality to Ocean, making it a fabric with incredibly high light fastness. Ocean has a soft surface structure and is 100% free of PFC, and manufactured without the use of water in production, which gives Ocean a more sustainable origin. Ocean is also STANDARD 100 by OEKO-TEX® certified and produced without dangerous chemicals and heavy metals.



Ocean - Fabric,
Antracit
8,524 \$



Ocean - Fabric,
Dark Blue
8,524 \$



Ocean - Fabric,
Dark Grey
8,524 \$



Ocean - Fabric,
Grey
8,524 \$

Select material and colour



Ocean - Fabric,
Light Grey
8,524 \$



Ocean - Fabric,
Sand
8,524 \$

PURE - FABRIC

Pure is a 100% pure natural product made of 40% linen and 60% cotton. The vintage-look material means that every metre is unique and each piece of furniture can vary in colour and appearance. However, this merely enriches the look and gives the fabric its own unique character. It is precisely this complex interplay of colour that makes Pure such a unique upholstery fabric, highlighted by a STANDARD 100 by OEKO-TEX® certification that ensures no dangerous chemicals are used in production.



Pure - Fabric, Dark
Grey
8,524 \$



Pure - Fabric, Grey
8,524 \$



Pure - Fabric, Light
Brown
8,524 \$



Pure - Fabric, Light
Grey
8,524 \$



Pure - Fabric, Sand
8,524 \$



Pure - Fabric, Beige
8,524 \$

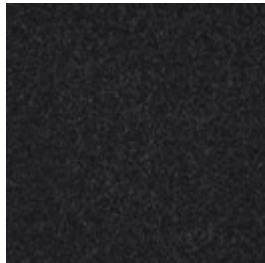
Select material and colour

QUAL - WOOL

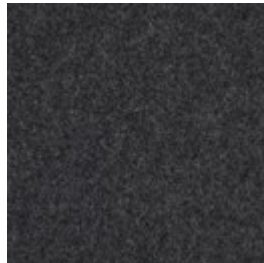
Qual is woven from 100% pure new wool – specially developed for Bolia. The soft structure makes it comfortable and user-friendly. The wool's natural content of lanolin makes the fabric easy to keep clean. The result is an upholstery fabric of exceptional quality, which is certified in accordance with STANDARD 100 by OEKO-TEX® and has the distinctive, rustic feel you would expect from a natural wool fabric such as Qual.



Qual - Wool, Curry
Melange
8,524 \$



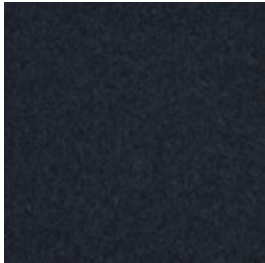
Qual - Wool, Dark
Grey Melange
8,524 \$



Qual - Wool, Grey
Melange
8,524 \$



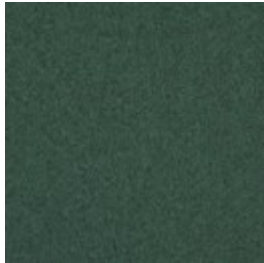
Qual - Wool, Light
Grey Melange
8,524 \$



Qual - Wool, Navy
Melange
8,524 \$



Qual - Wool, Sand
8,524 \$



Qual - Wool, Sea
Green
8,524 \$



Qual - Wool, Stone
Grey
8,524 \$

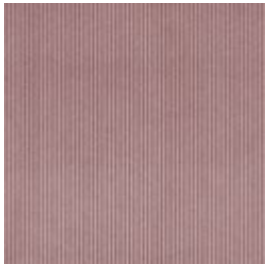


Qual - Wool, Dark
Beige
8,524 \$

Select material and colour

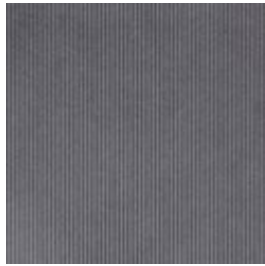
LINEA - VELVET

Taken from the Latin language, Linea means line, reflecting the beautiful and distinctive exterior of this fabric. A fabric inspired by the corduroy-feel, Linea is both elegant and playful. With an incredibly soft tactility and extremely durable quality, exemplified in a Martindale value of 100.000, this fabric offers something truly spectacular. Linea is certified OEKO-TEX certified guaranteeing no hazardous chemicals are used.



Linea - Velvet, Rosa

8,524 \$



Linea - Velvet, Grey

8,524 \$



Linea - Velvet,
Green

8,524 \$



Linea - Velvet, Dark
Beige

8,524 \$



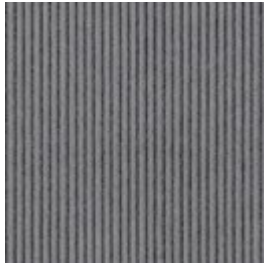
Linea - Velvet, Blue

8,524 \$



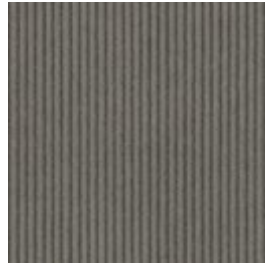
Linea - Velvet,
Beige

8,524 \$



Linea - Velvet, Steel
Grey

8,524 \$



Linea - Velvet, Grey
Brown

8,524 \$



Linea - Velvet, Sand

8,524 \$

Select material and colour

STEP MELANGE Step Melange features a vibrant and attractive interplay of colour with a luxurious melange effect. Step Melange is both OEKO-TEX certified and EU Ecolabelled, making it therefore a durable and beautiful furniture fabric. With a Martindale count of 100,000, the fabric is also suitable for both private and public use.



Step Melange -
Fabric, Beige
8,524 \$



Step Melange -
Fabric, Dark grey
8,524 \$



Step Melange -
Fabric, Grey
8,524 \$



Step Melange -
Fabric, Grey Blue
8,524 \$



Step Melange -
Fabric, Light Grey
8,524 \$

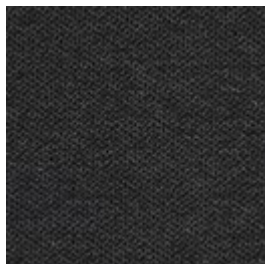


Step Melange -
Fabric, Light Blue
Green
8,524 \$

ASCOT - FABRIC Ascot is a flat woven upholstery, with a rough texture and a soft surface. By combining synthetic, durable fibres with natural ones, Ascot combines the best of both worlds. Ascot is STANDARD 100 by OEKO-TEX® certified and tested in accordance with the highest standards.



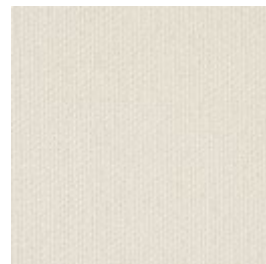
Ascot - Fabric,
Beige
9,133 \$



Ascot - Fabric,
Charcoal
9,133 \$



Ascot - Fabric, Grey
9,133 \$

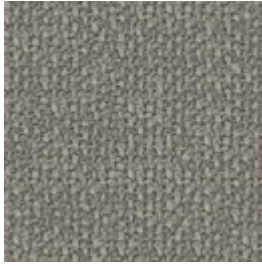


Ascot - Fabric,
Ivory
9,133 \$

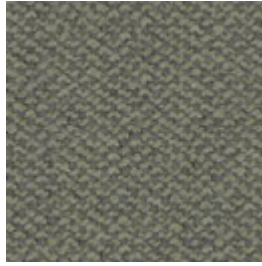
Select material and colour



Ascot - Fabric,
Light Grey
9,133 \$



Ascot - Fabric, Dark
Beige
9,133 \$



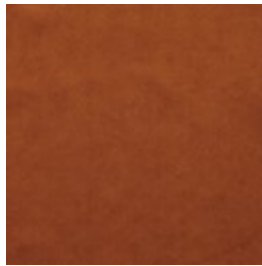
Ascot - Fabric,
Green
9,133 \$

NOVEL - VELOUR

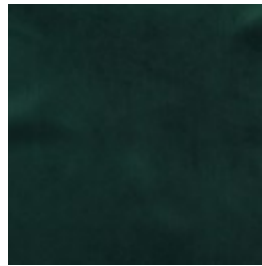
Novel is an elegant and soft velour with a luxurious '70s vibe. The soft fabric feels comfortable and brushes blissfully against your body. A sophisticated fabric that makes sure your furniture will get noticed.



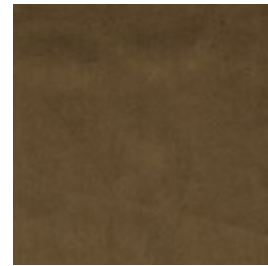
Novel - Velour,
Beige
9,133 \$



Novel - Velour,
Cognac
9,133 \$



Novel - Velour, Dark
green
9,133 \$



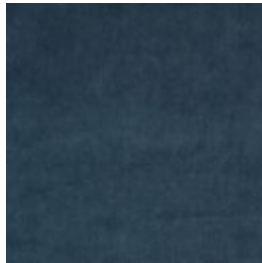
Novel - Velour,
Green
9,133 \$



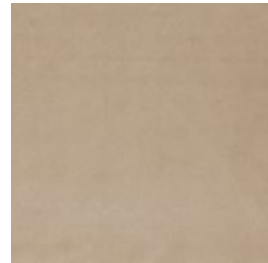
Novel - Velour, Grey
Brown
9,133 \$



Novel - Velour,
Light Grey
9,133 \$



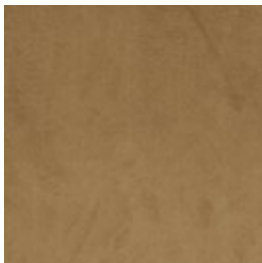
Novel - Velour,
Stone Blue
9,133 \$



Novel - Velour,
Light Beige
9,133 \$



Novel - Velour, Dust
green
9,133 \$



Novel - Velour,
Camel
9,133 \$

Select material and colour

GAJA C2C - WOOL

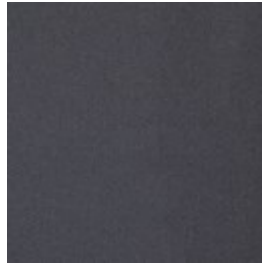
Gaja C2C is the first wool fabric with Cradle to Cradle Silver certification™. Cradle to Cradle is a certification where the designs are evaluated on the material's health, the recyclable properties of the material, the use of renewable energy, water management and social fairness on a larger scale. Gaja C2C is made of New Zealand wool and manufactured without the use of any hazardous chemicals. The fabric is also OEKO-TEX® certified and has been awarded the EU Ecolabel. Gaja C2C is our most sustainable furniture fabric, where every single choice has been made with consideration for the environment and our surroundings.



Gaja C2C - Wool,
Light Grey
9,133 \$



Gaja C2C - Wool,
Light Brown
9,133 \$



Gaja C2C - Wool,
Dark grey
9,133 \$



Gaja C2C - Wool,
Dark green
9,133 \$



Gaja C2C - Wool,
Dark brown
9,133 \$



Gaja C2C - Wool,
Dark blue green
9,133 \$

VILME - FABRIC

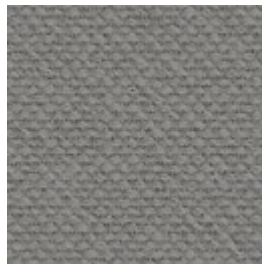
Vilme is made in Italy from a mix of exclusive, natural yarns and is, of course, STANDARD 100 by OEKO-TEX® certified. The fabric has a rustic softness, where the texture is a result of the weaving process and the final finish. Vilme is woven by a manufacturer that exclusively uses sustainable energy - 40% solar and 60% wind energy. Resulting in a luxurious fabric, with a lower footprint.



Vilme - Fabric, Grey
Brown
9,133 \$



Vilme - Fabric,
Sand
9,133 \$

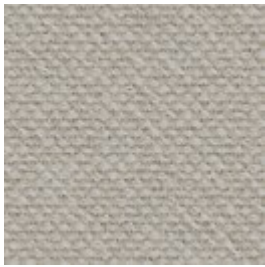


Vilme - Fabric, Grey
9,133 \$



Vilme - Fabric,
Light Grey
9,133 \$

Select material and colour



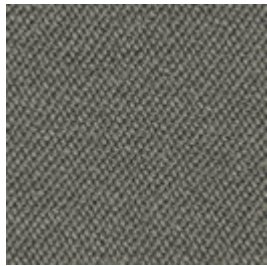
Vilme - Fabric,
Beige
9,133 \$

**REVI -
FABRIC**

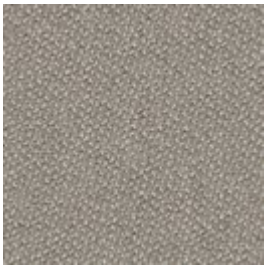
Revi is made of 100% recycled material, especially making use of surplus plastic from the sea, lakes and beaches, such as plastic bottles. Revi is one of our most sustainable upholstery fabrics produced with the desire to create cleaner seas worldwide. The fabric is also produced by a manufacturer with a particularly green profile, which places great emphasis on sustainability in every aspect of the value chain. The fabric is durable with a soft tactility, a clear texture and the bouclé adds visual interest to the fabric. Like all our other fabrics, Revi is certified according to STANDARD 100 by OEKO-TEX®.



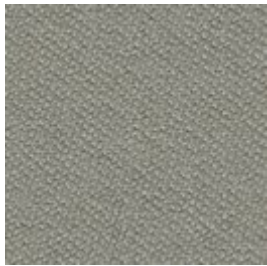
Revi - Fabric, Beige
9,133 \$



Revi - Fabric, Green
9,133 \$



Revi - Fabric, Dark
Beige
9,133 \$



Revi - Fabric, Light
Green
9,133 \$



Revi - Fabric, Ivory
9,133 \$



Revi - Fabric,
Brown
9,133 \$



Revi - Fabric,
Antracit
9,133 \$

Select material and colour

LAINÉ - WOOL

Laine is an exclusive wool fabric consisting of 92% pure wool from New Zealand. The fabric has a vibrant appearance with a stylish melange effect. The fabric is also STANDARD by OEKO-TEX® certified and has been awarded the EU Ecolabel.



Laine - Wool,
Anthracit
9,763 \$



Laine - Wool, Beige
9,763 \$



Laine - Wool, Dark
Blue
9,763 \$



Laine - Wool, Dark
Grey
9,763 \$



Laine - Wool, Grey
9,763 \$



Laine - Wool, Light
Blue
9,763 \$



Laine - Wool, Light
Brown
9,763 \$

MIRA - WOOL

Mira is a 100% natural wool fabric with a melange effect that creates a dynamic interplay of colours. The firm structure is soft to the touch and the threads are fine with a close weave. Mira is a high quality wool fabric that is woven and inspected in Germany. Mira is a high quality wool fabric that is STANDARD 100 by OEKO-TEX® certified with an incredibly high abrasion resistance.



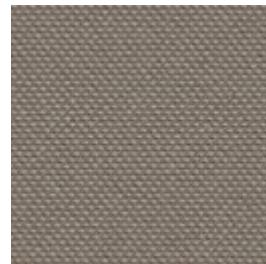
Mira - Wool, Blue
9,763 \$



Mira - Wool, Dust
Green
9,763 \$



Mira - Wool, Stone
Blue
9,763 \$



Mira - Wool, Dark
Beige
9,763 \$

Select material and colour



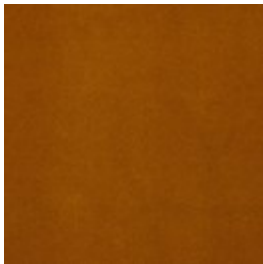
Mira - Wool, Warm
White
9,763 \$



Mira - Wool, Grey
Brown
9,763 \$

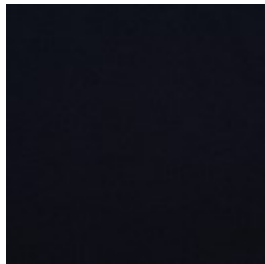
**RITZ -
VELOUR**

Ritz is a beautiful and velvety upholstery fabric. The velour fabric is exclusive in its appearance and its properties. Choose Ritz if you want a piece of furniture that stands out from the crowd.



Ritz - Velour, Curry

9,763 \$



Ritz - Velour, Dark
Blue
9,763 \$



Ritz - Velour, Forest
Green
9,763 \$

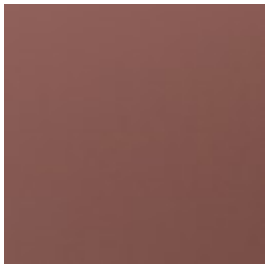


Ritz - Velour, Grey

9,763 \$



Ritz - Velour, Light
Grey
9,763 \$



Ritz - Velour, Light
Rosa
9,763 \$

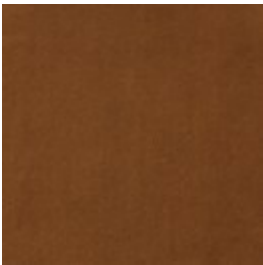


Ritz - Velour, Steel
Grey
9,763 \$



Ritz - Velour, Beige

9,763 \$



Ritz - Velour, Camel
9,763 \$

Select material and colour

MONZA - FABRIC

Monza is an OEKO-TEX certified fabric with a strong boucle tactility made from a mixture of natural and durable patterns like cotton and wool. A luxurious fabric with a strong and structured touch and expression stressed by the boucle texture where small nooses are combined to give that distinctive contour and feel. With Martindale of 80.000 and an excellent 7 on a scale from 2-8 in light fastness, Monza is sure to hold its form, colour and format for many years to come.



Monza - Fabric, Sea
Green
9,763 \$



Monza - Fabric,
Grey
9,763 \$



Monza - Fabric,
Dark Grey
9,763 \$



Monza - Fabric,
Dark Beige
9,763 \$



Monza - Fabric,
Beige
9,763 \$



Monza - Fabric,
Sand
9,763 \$

Select legs



Black lacquered
steel
7,852 \$

We are here to help

Phone: +45 88960225 Email: Customerservice@bolia.com