

## Elton Sofa 2 seater



## Elton

Elton, designed by Glismand & Rüdiger, is a beautiful and timeless series of sofas, poufs and daybeds. With its clean silhouette, surrounded by the slim oak frame, Elton rises above the ground and allows every tailored component and craftsmanship detail to be visibly exposed in its most honest form. The light 30 mm solid wooden frame seems to almost float, elevated underneath the inviting cushions. A contrasting and elegant design that is only made possible by the sofa's interior construction. Elton's interior is constructed with a special metal frame and fibreglass reinforced nylon slats, which lifts the furniture and ensures optimal comfort. The sofa has reversible back cushions, filled with the innovative Fossflakes, which is a hypoallergenic, down-like filling that keeps its shape longer than conventional down filling. Each of the sofa's components are interchangeable as the years progress, in order to extend the lifetime as far as possible.

**7,978 \$**

**Glismand & Rüdiger**

### Specification

**Cover**

Fawn, Light Grey

**Height**

77 cm

**Composition**

100% Polyester

**Seat height**

42 cm

**Base**

Oiled oak - Solid

**Seat depth**

60 cm

**Width**

186 cm

**Armrest height**

77 cm

**Depth**

100 cm

**Tests and certificates**

TSCA Title VI compliant, FSC® C165134, TB 117-2013 California Technical Bulletin, EN 16139 - L1: General use. Furniture - Strength, durability and safety - Requirements for non-domestic seating. EN 1022:2005 - Domestic furniture - Seating - Determination of stability.

# Select material and colour

## FAWN - FABRIC

Fawn has a Scandinavian, natural look. The fabric is wonderfully soft and features a subtle play of colour. Fawn adds a minimalistic and simple look to your home. Instead, its printed colour technique gives Fawn its distinctive look, which is beautifully complemented by a genuine quality highlighted by its STANDARD 100 by OEKO-TEX® certification, which ensures that no dangerous chemicals are used in production.



Fawn - Fabric,  
Antracit  
7,978 \$



Fawn - Fabric,  
Green  
7,978 \$



Fawn - Fabric, Grey  
7,978 \$



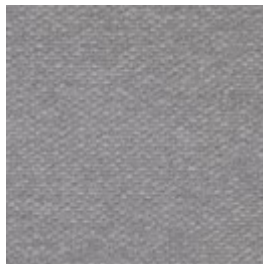
Fawn - Fabric, Light  
Grey  
7,978 \$

## SIRA - FABRIC

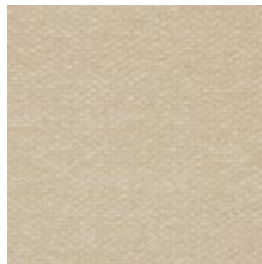
Sira is a soft and comforting fabric made from 100% recycled cotton making it a natural, beautiful and sustainable choice. No new raw materials have been used, and the production is solely sponsored by solar or wind energy. Sira has a bold structure, yet incredibly soft feel. The heavy texture is complemented by the inviting touch that makes Sira a beautiful fabric – and even one of our most sustainable fabrics available.



Sira - Fabric, Grey  
Brown  
8,083 \$



Sira - Fabric, Light  
Grey  
8,083 \$



Sira - Fabric, Beige  
8,083 \$



Sira - Fabric, Blue  
8,083 \$



Sira - Fabric, Dark  
Beige  
8,083 \$



Sira - Fabric, Grey  
8,083 \$

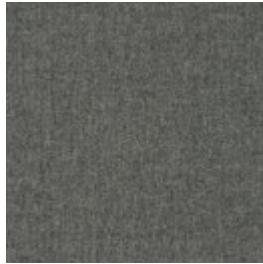
# Select material and colour

## SOIL - FABRIC

Soil is a flat-woven soft fabric made from 60% recycled bottles and is STANDARD 100 by OEKO-TEX®-certified. A strong and durable fabric with a sustainable outset.



Soil - Fabric, Rose  
Melange  
8,083 \$



Soil - Fabric, Dark  
Grey  
8,083 \$



Soil - Fabric, Stone  
Blue  
8,083 \$



Soil - Fabric, Sand  
8,083 \$



Soil - Fabric, Dark  
Brown  
8,083 \$



Soil - Fabric, Green  
8,083 \$



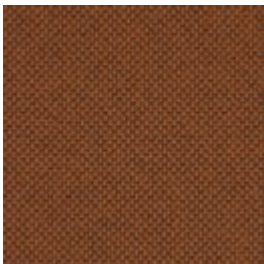
Soil - Fabric, Light  
Grey  
8,083 \$



Soil - Fabric, Dark  
green  
8,083 \$

## BERGO - FABRIC

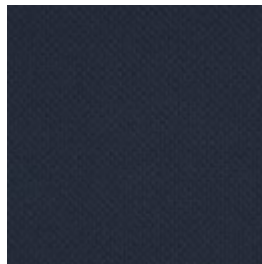
Bergo does something none of our other materials can do. It's made from recycled polyester made of plastic bottles. This ensures that no new raw materials are used and production focuses on minimising energy consumption and the use of biodegradable chemicals. Likewise, Bergo is free from heavy metals, has been awarded the EU Ecolabel and is STANDARD 100 by OEKO-TEX® certified.



Bergo - Fabric, Raw  
Amber  
8,083 \$



Bergo - Fabric,  
Beige  
8,083 \$

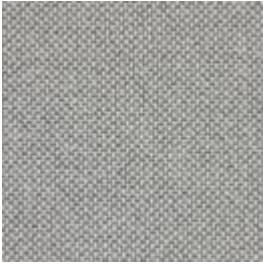


Bergo - Fabric,  
Dark Blue  
8,083 \$



Bergo - Fabric,  
Grey  
8,083 \$

# Select material and colour



Bergo - Fabric,  
Light Grey  
8,083 \$

## **BAIZE - FABRIC**

Baize is an extra soft upholstery fabric that provides superior comfort. The material has a beautiful, classic look that suits most furniture. Baize is also certified according to STANDARD 100 by OEKO-TEX®, which ensures that no dangerous chemicals or heavy metals are used in its production.



Baize - Fabric, Dust  
Blue  
8,083 \$



Baize - Fabric, Grey  
8,083 \$



Baize - Fabric, Light  
Grey  
8,083 \$



Baize - Fabric, Sand  
8,083 \$

## **NANTES - FABRIC**

Nantes is woven from 100% polyester and is an absolute bestseller. This stylish fabric featuring a visible structure is both stain-resistant and durable. Nantes is a timeless upholstery fabric that is STANDARD 100 by OEKO-TEX® certified and made to last.



Nantes - Fabric,  
Multi Grey  
8,083 \$



Nantes - Fabric,  
Petrol  
8,083 \$



Nantes - Fabric,  
Sea Green  
8,083 \$

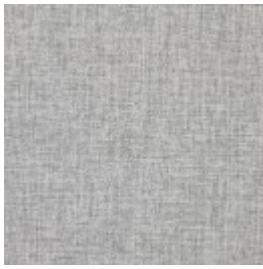


Nantes - Fabric,  
Dust Blue  
8,083 \$

# Select material and colour



Nantes - Fabric,  
Light Beige  
8,083 \$



Nantes - Fabric,  
Light Grey  
8,083 \$



Nantes - Fabric,  
Antracit  
8,083 \$



Nantes - Fabric,  
Blue Grey  
8,083 \$

## **STEP MELANGE - FABRIC**

Step Melange features a vibrant and attractive interplay of colour with a luxurious melange effect. Step Melange is both OEKO-TEX certified and EU Ecolabelled, making it therefore a durable and beautiful furniture fabric. With a Martindale count of 100,000, the fabric is also suitable for both private and public use.



Step Melange -  
Fabric, Light Grey  
8,818 \$



Step Melange -  
Fabric, Light Blue  
Green  
8,818 \$



Step Melange -  
Fabric, Beige  
8,818 \$



Step Melange -  
Fabric, Dark grey  
8,818 \$



Step Melange -  
Fabric, Grey  
8,818 \$



Step Melange -  
Fabric, Grey Blue  
8,818 \$

# Select material and colour

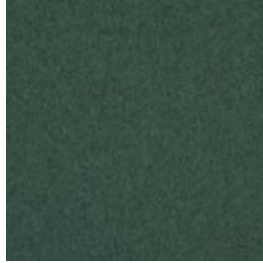
## QUAL - WOOL

Qual is woven from 100% pure new wool – specially developed for Bolia. The soft structure makes it comfortable and user-friendly. The wool's natural content of lanolin makes the fabric easy to keep clean. The result is an upholstery fabric of exceptional quality, which is certified in accordance with STANDARD 100 by OEKO-TEX® and has the distinctive, rustic feel you would expect from a natural wool fabric such as Qual.



Qual - Wool, Sand

8,818 \$



Qual - Wool, Sea  
Green

8,818 \$



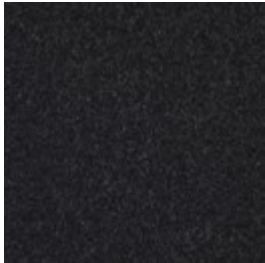
Qual - Wool, Stone  
Grey

8,818 \$



Qual - Wool, Dark  
Beige

8,818 \$



Qual - Wool, Dark  
Grey Melange

8,818 \$



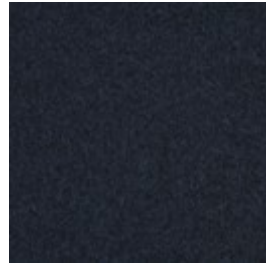
Qual - Wool, Grey  
Melange

8,818 \$



Qual - Wool, Light  
Grey Melange

8,818 \$



Qual - Wool, Navy  
Melange

8,818 \$



Qual - Wool, Curry  
Melange

8,818 \$



# Select material and colour

## PURE - FABRIC

Pure is a 100% pure natural product made of 40% linen and 60% cotton. The vintage-look material means that every metre is unique and each piece of furniture can vary in colour and appearance. However, this merely enriches the look and gives the fabric its own unique character. It is precisely this complex interplay of colour that makes Pure such a unique upholstery fabric, highlighted by a STANDARD 100 by OEKO-TEX® certification that ensures no dangerous chemicals are used in production.



Pure - Fabric, Sand

8,818 \$



Pure - Fabric, Beige

8,818 \$



Pure - Fabric, Dark  
Grey

8,818 \$



Pure - Fabric, Grey

8,818 \$



Pure - Fabric, Light  
Brown

8,818 \$



Pure - Fabric, Light  
Grey

8,818 \$

## OCEAN - FABRIC

Ocean is a special furniture fabric with unique qualities that can be seen in the dye, where even the smallest parts are dyed before the threads are spun. This is a completely unique quality to Ocean, making it a fabric with incredibly high light fastness. Ocean has a soft surface structure and is 100% free of PFC, and manufactured without the use of water in production, which gives Ocean a more sustainable origin. Ocean is also STANDARD 100 by OEKO-TEX® certified and produced without dangerous chemicals and heavy metals.



Ocean - Fabric,  
Dark Grey

8,818 \$



Ocean - Fabric,  
Grey

8,818 \$



Ocean - Fabric,  
Light Grey

8,818 \$



Ocean - Fabric,  
Sand

8,818 \$

# Select material and colour



Ocean - Fabric,  
Antracit  
8,818 \$

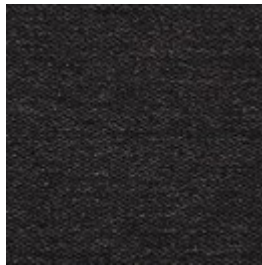


Ocean - Fabric,  
Dark Blue  
8,818 \$

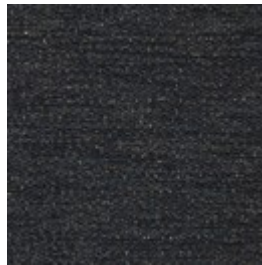
**MEMORY - FABRIC** - Memory is an upholstery toned with three colours that give the fabric a totally unique character. A durable and hard-wearing fabric with a beautiful and elegant structure that not only adds an exclusive look to any piece of furniture, but is also soft and comfortable to sit in. Memory is also STANDARD 100 by OEKO-TEX® certified.



Memory - Fabric,  
Light Grey  
8,818 \$



Memory - Fabric,  
Antracit  
8,818 \$



Memory - Fabric,  
Blue  
8,818 \$



Memory - Fabric,  
Grey  
8,818 \$



Memory - Fabric,  
Grey - White  
8,818 \$



Memory - Fabric,  
Light Brown  
8,818 \$



# Select material and colour

**LONDON - FABRIC** - London is a strong upholstery fabric and comes in a variety of colors. It is a beautifully woven fabric with a pure and elegant look. London is 100% polyester. London is also manufactured without the use of dangerous chemicals and is STANDARD 100 by OEKO-TEX® certified.



London - Fabric,  
Multi Grey  
8,818 \$



London - Fabric,  
Sea Green  
8,818 \$



London - Fabric,  
Dust Green  
8,818 \$



London - Fabric,  
Grey Brown  
8,818 \$



London - Fabric,  
Light Beige  
8,818 \$



London - Fabric,  
Light Grey  
8,818 \$



London - Fabric,  
Blue  
8,818 \$



London - Fabric,  
Brown  
8,818 \$



London - Fabric,  
Dark Grey  
8,818 \$



London - Fabric,  
Dust Blue  
8,818 \$

# Select material and colour

**LINEA -  
VELVET**

Taken from the Latin language, Linea means line, reflecting the beautiful and distinctive exterior of this fabric. A fabric inspired by the corduroy-feel, Linea is both elegant and playful. With an incredibly soft tactility and extremely durable quality, exemplified in a Martindale value of 100.000, this fabric offers something truly spectacular. Linea is certified OEKO-TEX certified guaranteeing no hazardous chemicals are used.



Linea - Velvet, Rosa

8,818 \$



Linea - Velvet,  
Beige

8,818 \$



Linea - Velvet, Blue

8,818 \$



Linea - Velvet, Dark  
Beige

8,818 \$



Linea - Velvet,  
Green

8,818 \$



Linea - Velvet, Grey

8,818 \$



Linea - Velvet, Sand

8,818 \$



Linea - Velvet, Grey  
Brown

8,818 \$



Linea - Velvet, Steel  
Grey

8,818 \$

# Select material and colour

## **GAJA C2C - WOOL**

Gaja C2C is the first wool fabric with Cradle to Cradle Silver certification™. Cradle to Cradle is a certification where the designs are evaluated on the material's health, the recyclable properties of the material, the use of renewable energy, water management and social fairness on a larger scale. Gaja C2C is made of New Zealand wool and manufactured without the use of any hazardous chemicals. The fabric is also OEKO-TEX® certified and has been awarded the EU Ecolabel. Gaja C2C is our most sustainable furniture fabric, where every single choice has been made with consideration for the environment and our surroundings.



Gaja C2C - Wool,  
Dark grey  
9,238 \$



Gaja C2C - Wool,  
Light Brown  
9,238 \$



Gaja C2C - Wool,  
Light Grey  
9,238 \$



Gaja C2C - Wool,  
Dark blue green  
9,238 \$



Gaja C2C - Wool,  
Dark brown  
9,238 \$



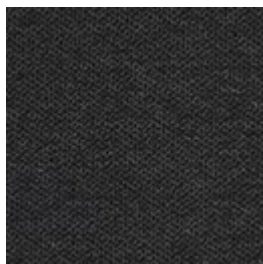
Gaja C2C - Wool,  
Dark green  
9,238 \$

## **ASCOT - FABRIC**

Ascot is a flat woven upholstery, with a rough texture and a soft surface. By combining synthetic, durable fibres with natural ones, Ascot combines the best of both worlds. Ascot is STANDARD 100 by OEKO-TEX® certified and tested in accordance with the highest standards.



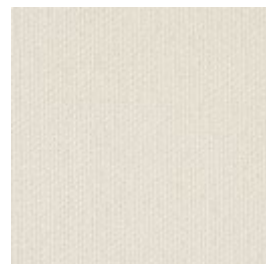
Ascot - Fabric,  
Beige  
9,238 \$



Ascot - Fabric,  
Charcoal  
9,238 \$



Ascot - Fabric, Grey  
9,238 \$

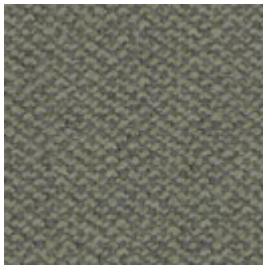


Ascot - Fabric,  
Ivory  
9,238 \$

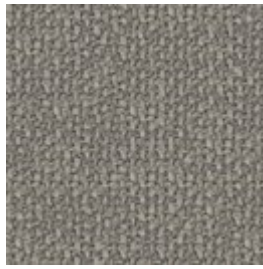
# Select material and colour



Ascot - Fabric,  
Light Grey  
9,238 \$



Ascot - Fabric,  
Green  
9,238 \$



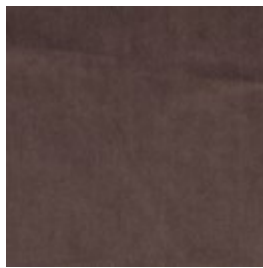
Ascot - Fabric, Dark  
Beige  
9,238 \$

## **NOVEL - VELOUR**

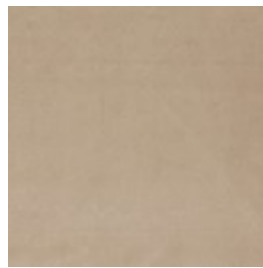
Novel is an elegant and soft velour with a luxurious '70s vibe. The soft fabric feels comfortable and brushes blissfully against your body. A sophisticated fabric that makes sure your furniture will get noticed.



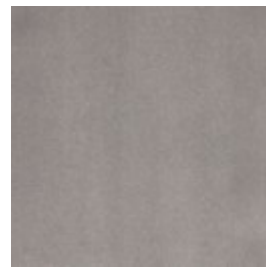
Novel - Velour,  
Green  
9,238 \$



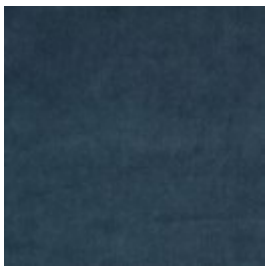
Novel - Velour, Grey  
Brown  
9,238 \$



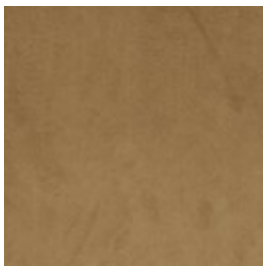
Novel - Velour,  
Light Beige  
9,238 \$



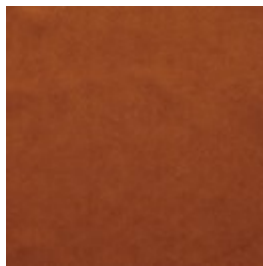
Novel - Velour,  
Light Grey  
9,238 \$



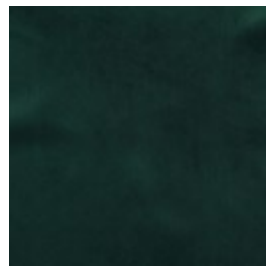
Novel - Velour,  
Stone Blue  
9,238 \$



Novel - Velour,  
Camel  
9,238 \$



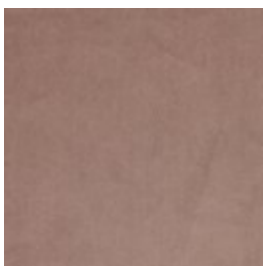
Novel - Velour,  
Cognac  
9,238 \$



Novel - Velour, Dark  
green  
9,238 \$



Novel - Velour, Dust  
green  
9,238 \$



Novel - Velour,  
Beige  
9,238 \$

# Select material and colour

## VILME - FABRIC

Vilme is made in Italy from a mix of exclusive, natural yarns and is, of course, STANDARD 100 by OEKO-TEX® certified. The fabric has a rustic softness, where the texture is a result of the weaving process and the final finish. Vilme is woven by a manufacturer that exclusively uses sustainable energy - 40% solar and 60% wind energy. Resulting in a luxurious fabric, with a lower footprint.



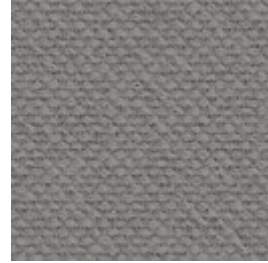
Vilme - Fabric, Grey  
Brown  
9,238 \$



Vilme - Fabric,  
Beige  
9,238 \$



Vilme - Fabric,  
Light Grey  
9,238 \$



Vilme - Fabric, Grey  
9,238 \$



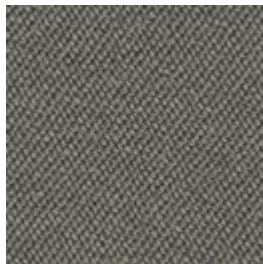
Vilme - Fabric,  
Sand  
9,238 \$

## REVI - FABRIC

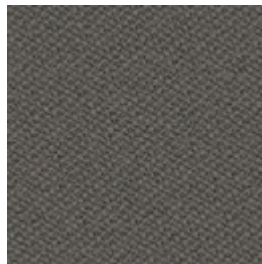
Revi is made of 100% recycled material, especially making use of surplus plastic from the sea, lakes and beaches, such as plastic bottles. Revi is one of our most sustainable upholstery fabrics produced with the desire to create cleaner seas worldwide. The fabric is also produced by a manufacturer with a particularly green profile, which places great emphasis on sustainability in every aspect of the value chain. The fabric is durable with a soft tactility, a clear texture and the bouclé adds visual interest to the fabric. Like all our other fabrics, Revi is certified according to STANDARD 100 by OEKO-TEX®.



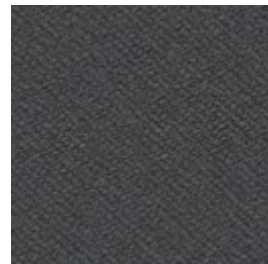
Revi - Fabric, Beige  
9,238 \$



Revi - Fabric, Green  
9,238 \$



Revi - Fabric,  
Brown  
9,238 \$



Revi - Fabric,  
Antracit  
9,238 \$

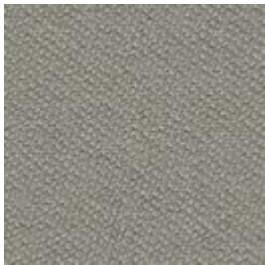


# Select material and colour



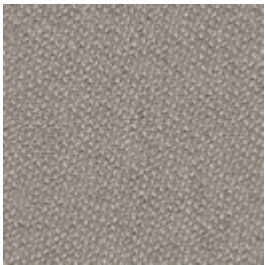
Revi - Fabric, Ivory

9,238 \$



Revi - Fabric, Light Green

9,238 \$

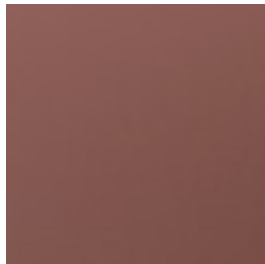


Revi - Fabric, Dark Beige

9,238 \$

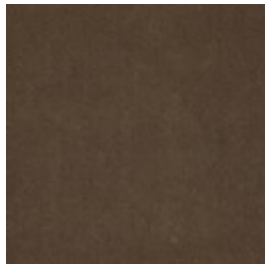
**RITZ -  
VELOUR**

Ritz is a beautiful and velvety upholstery fabric. The velour fabric is exclusive in its appearance and its properties. Choose Ritz if you want a piece of furniture that stands out from the crowd.



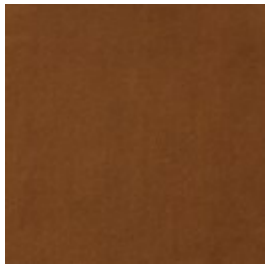
Ritz - Velour, Light Rosa

10,162 \$



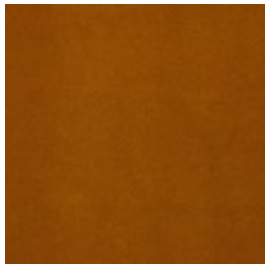
Ritz - Velour, Steel Grey

10,162 \$



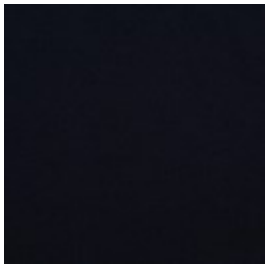
Ritz - Velour, Camel

10,162 \$



Ritz - Velour, Curry

10,162 \$



Ritz - Velour, Dark Blue

10,162 \$



Ritz - Velour, Forest Green

10,162 \$



Ritz - Velour, Grey

10,162 \$



Ritz - Velour, Light Grey

10,162 \$



Ritz - Velour, Beige

10,162 \$

# Select material and colour

## LAINÉ - WOOL

Laine is an exclusive wool fabric consisting of 92% pure wool from New Zealand. The fabric has a vibrant appearance with a stylish melange effect. The fabric is also STANDARD by OEKO-TEX® certified and has been awarded the EU Ecolabel.



Laine - Wool, Dark Blue  
10,162 \$



Laine - Wool, Dark Grey  
10,162 \$



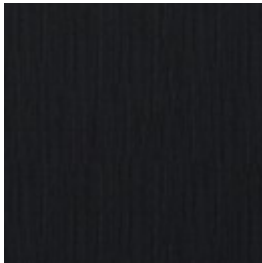
Laine - Wool, Grey  
10,162 \$



Laine - Wool, Light Blue  
10,162 \$



Laine - Wool, Light Brown  
10,162 \$



Laine - Wool, Antracit  
10,162 \$



Laine - Wool, Beige  
10,162 \$

## MONZA - FABRIC

Monza is an OEKO-TEX certified fabric with a strong boucle tactility made from a mixture of natural and durable patterns like cotton and wool. A luxurious fabric with a strong and structured touch and expression stressed by the boucle texture where small nooses are combined to give that distinctive contour and feel. With Martindale of 80.000 and an excellent 7 on a scale from 2-8 in light fastness, Monza is sure to hold its form, colour and format for many years to come.



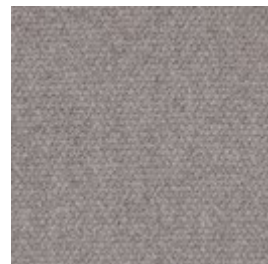
Monza - Fabric, Beige  
10,162 \$



Monza - Fabric, Dark Beige  
10,162 \$



Monza - Fabric, Dark Grey  
10,162 \$

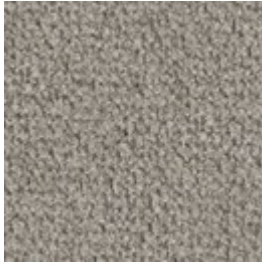


Monza - Fabric, Grey  
10,162 \$

# Select material and colour



Monza - Fabric, Sea  
Green  
10,162 \$



Monza - Fabric,  
Sand  
10,162 \$

## **MIRA - WOOL**

Mira is a 100% natural wool fabric with a melange effect that creates a dynamic interplay of colours. The firm structure is soft to the touch and the threads are fine with a close weave. Mira is a high quality wool fabric that is woven and inspected in Germany. Mira is a high quality wool fabric that is STANDARD 100 by OEKO-TEX® certified with an incredibly high abrasion resistance.



Mira - Wool, Blue  
10,162 \$



Mira - Wool, Dust  
Green  
10,162 \$



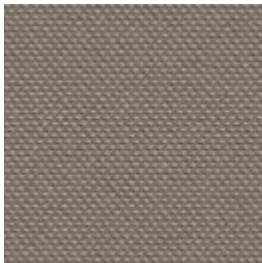
Mira - Wool, Stone  
Blue  
10,162 \$



Mira - Wool, Warm  
White  
10,162 \$



Mira - Wool, Grey  
Brown  
10,162 \$



Mira - Wool, Dark  
Beige  
10,162 \$

# Select material and colour

## **SYDNEY - LEATHER**

Sydney is an exclusive traceable leather from Australia with an elegant and soft touch. The tactility is incredibly soft while still holding a timeless feel. A breathable aniline leather with great qualities and durable traits. The surface structure is soft yet with a mat feel and invites your fingers to explore. A high-quality leather that due to its natural characters is light sensitive and can change colour if placed in direct sunlight, but cared for correctly, will become even more beautiful over the years.



Sydney - Leather,  
Cognac  
12,388 \$



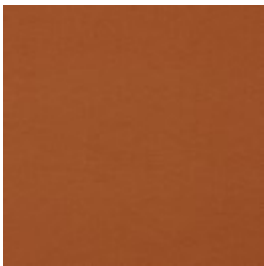
Sydney - Leather,  
Warm Cognac  
12,388 \$



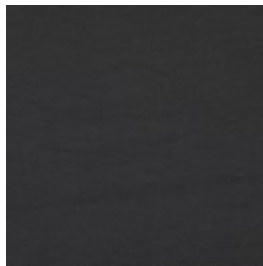
Sydney - Leather,  
Black  
12,388 \$

## **QUATTRO TRACEABLE - LEATHER**

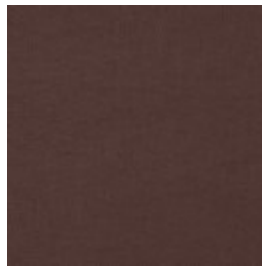
Quality leather from European cattle. Quattro traceable leather is tanned without the use of chrome and can always be traced back to the cattle's area of origin. The leather is lightly surface treated and dyed, which ensures the appearance and colour of the leather.



Quattro Traceable -  
Leather, Cognac  
12,388 \$



Quattro Traceable -  
Leather, Black  
12,388 \$



Quattro Traceable -  
Leather, Brown  
12,388 \$

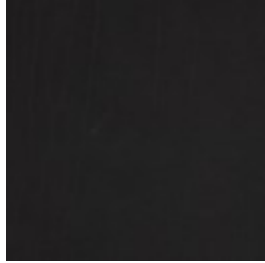
## Select material and colour

### AUSTIN - LEATHER

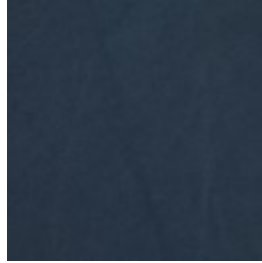
An exclusive, solid leather that's 100% traceable, with a soft and smooth surface, produced from the best European materials. The leather is breathable, which, alongside the other qualities, makes Austin bliss to sit in. And lie in. Austin is not surface treated and will therefore develop a beautiful patina over time.



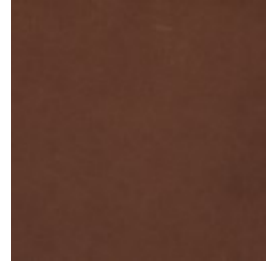
Austin - Leather,  
Grey  
14,068 \$



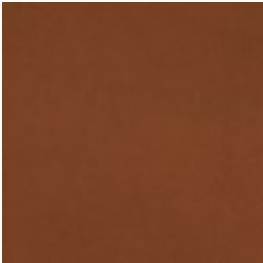
Austin - Leather,  
Black  
14,068 \$



Austin - Leather,  
Blue  
14,068 \$



Austin - Leather,  
Brown  
14,068 \$



Austin - Leather,  
Cognac  
14,068 \$

### Select legs



Oiled oak  
7,978 \$



White pigmented  
oiled oak  
7,978 \$

**We are here to help**

Phone: +45 88960225 Email: [Customerservice@bolia.com](mailto:Customerservice@bolia.com)